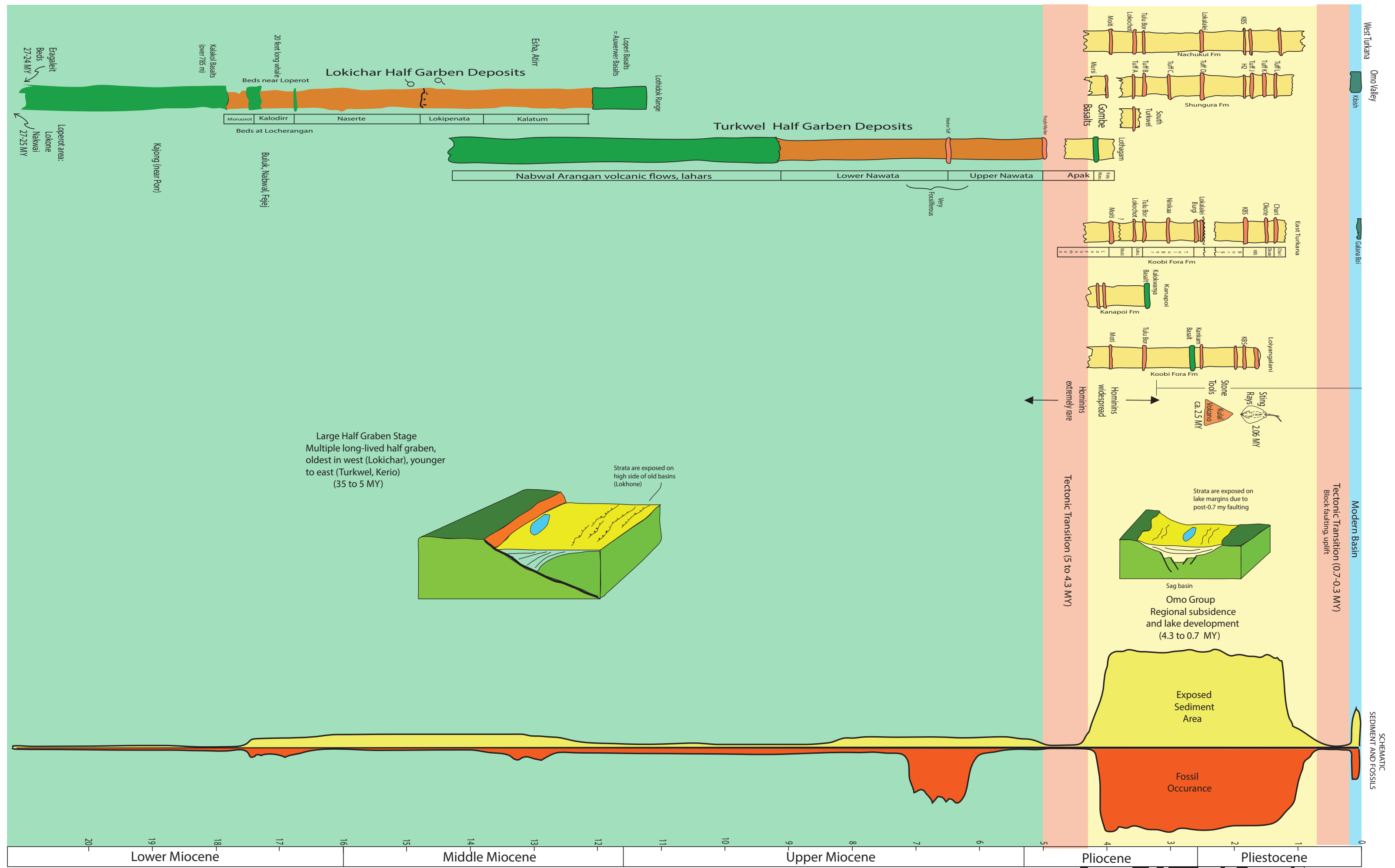


# Turkana Basin Stratigraphic and Structural Evolution 20 - 0 MY



The evolution of the Turkana Basin from 20 million years ago to the present is shown on this chart. The early deposide (green color) was characterized by long-lived assymmetric half-graben as schematically illustrated above. Strata accumulated in the Lokichar and Turkwel half-graben. These are exposed in the Lothidok Range and at Lothagam on the exposed up-tilted margins of these basins. The next deposite (yellow color) saw the accumulation of the Omo Group strata in a fault-bounded regionally subsiding lake system. Selected strata and volcanic ash beds are indicated. The modern basin (blue color) is characterized by sedimentation in a relatively stable lake and lake shore environment. The Galana Boi and Kibish formations accumulated during this phase. On the right, the area of exposed sediments and the abundance of vertebrate fossils is schematically shown. Note the extreme variability of fossil frequency through time.