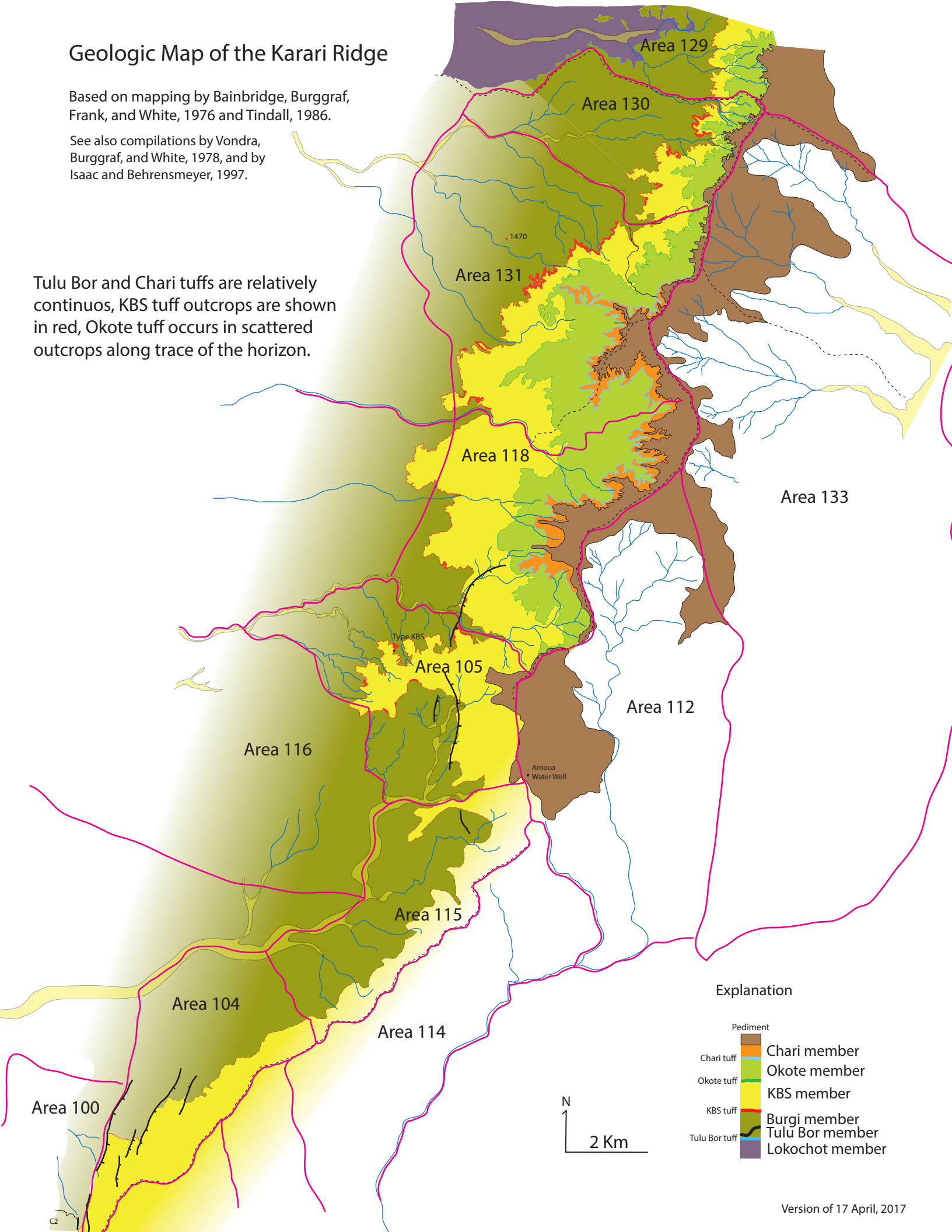


Geologic Map of the Karari Ridge







Based on mapping by Bainbridge, Burggraf, Frank, and White, 1976 and Tindall, 1986.

See also compilations by Vondra, Burggraf, and White, 1978, and by Isaac and Behrensmeyer, 1997.

Tulu Bor and Chari tuffs are relatively continuous, KBS tuff outcrops are shown in red, Okote tuff occurs in scattered outcrops along trace of the horizon.



Explanation

- | | |
|---|-----------------|
| Pediment | |
|  | Chari member |
|  | Okote member |
|  | KBS member |
|  | Burgi member |
|  | Tulu Bor member |
|  | Lokochot member |