

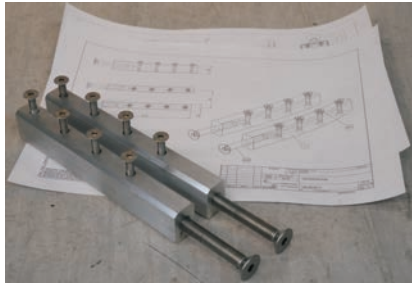
# Foxy PRO Upgrade Kit:



## 1. Foxy PRO Upgrade Kit

The Foxy Pro Upgrade Kit is an anchoring system which amplifies each outrigger. The result is an increased payload on platform or remote mount of up to 10%. Even if more payload is not required, there is additional safety of up to 50%. An important safety aspect when dynamic forces are higher than expected (crane mounted on vehicles etc.)

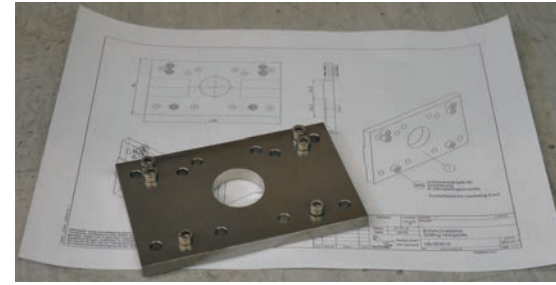
*Das Foxy Pro Upgrade Kit ist ein Verankerungssystem, das jeden Ausleger verstärkt. Das Ergebnis ist eine erhöhte Nutzlast auf der Plattform oder Remote-Halterung von bis zu 10%. Selbst wenn mehr Nutzlast nicht benötigt wird, gibt es zusätzliche Sicherheit von bis zu 50%. Ein wichtiger Sicherheitsaspekt, wenn dynamische Kräfte höher sind als erwartet (Kran auf Fahrzeuge montiert etc.)*



The anchoring is designed to easily mount by yourself with simple tools. The drilling template is not necessarily required, however it is helpful.

*Die Verankerung ist zur Selbstmontage mit einfachen Werkzeug konzipiert. Die Bohrschablone ist nicht unbedingt erforderlich, jedoch hilfreich.*

301518  
Outrigger anchoring/Ausleger Verankerung  
with instructions/mit Anleitung



301517  
Drilling template/ Bohrschablone  
with instructions/mit Anleitung



301520  
Tool kit/ Werkzeugkit

## 2. Additional counterweight bucket for 4 weights

An additional counterweight bucket is needed to get the 10% increase in payload of the PRO Upgrade Kit. It is not needed if only the 50% safety margin is desired.

*Ein zusätzlicher Gewichtskorb wird benötigt um die 10%ige Nutzlasterhöhung des PRO Upgrade Kit zu nutzen. Er wird nicht benötigt wenn nur die 50%ige Sicherheitsreserve gewünscht wird.*



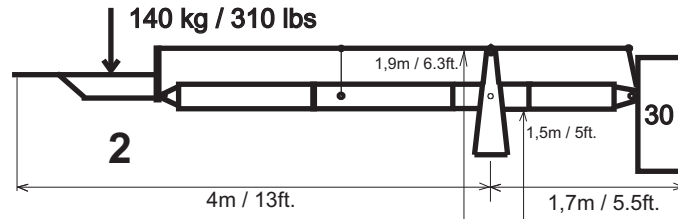
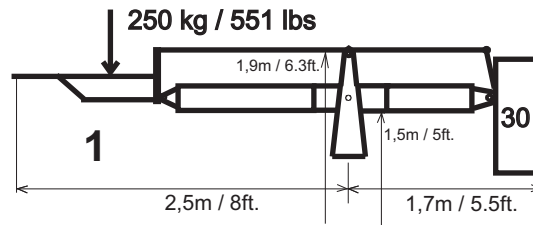
301850  
additional weight bucket for 4 weights



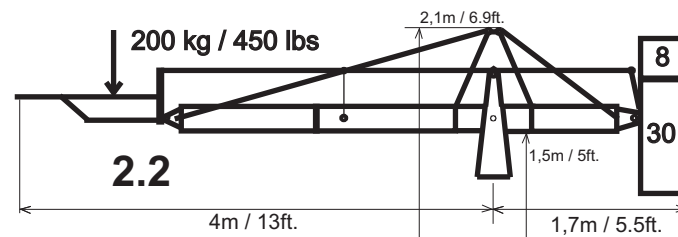
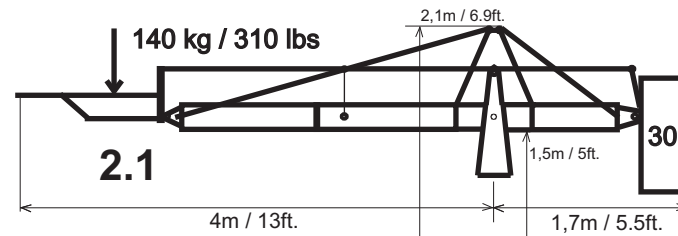
# Foxy Crane System:

## Platform Versions:

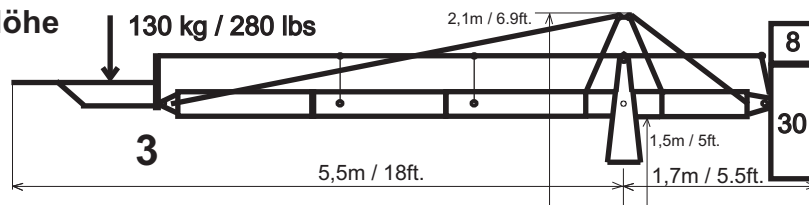
max. Height/Höhe  
= 3,5m(11.5ft.)



max. Height/Höhe  
= 4,7m(15.5ft.)



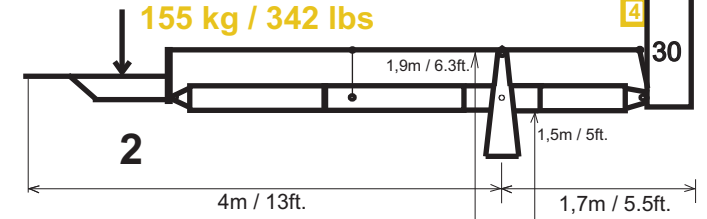
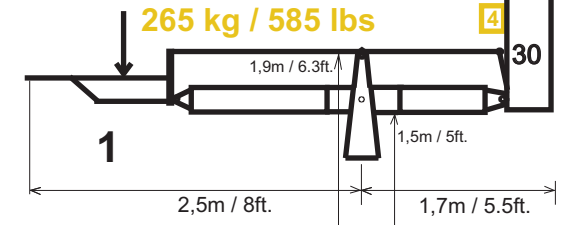
max. Height/Höhe  
= 6,1m(20ft.)



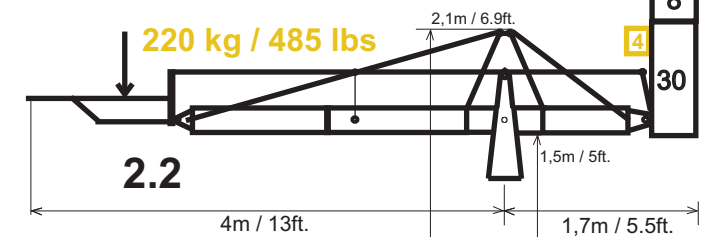
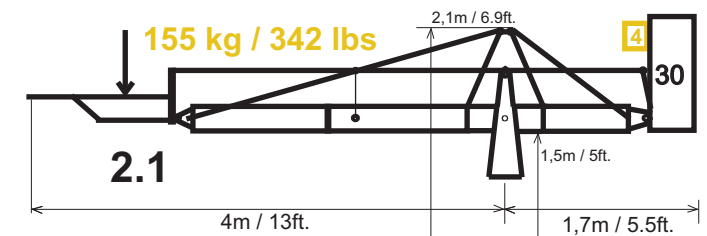
# Foxy Crane System with PRO Upgrade:

## Platform Versions:

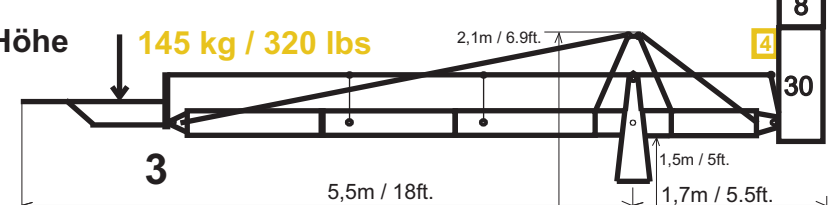
max. Height/Höhe  
= 3,5m(11.5ft.)



max. Height/Höhe  
= 4,7m(15.5ft.)

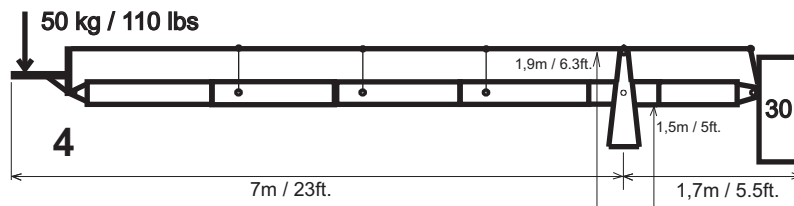


max. Height/Höhe  
= 6,1m(20ft.)

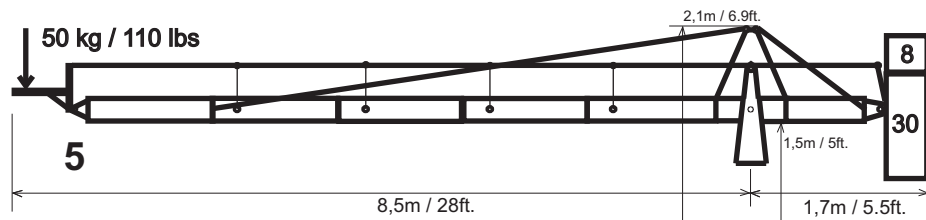
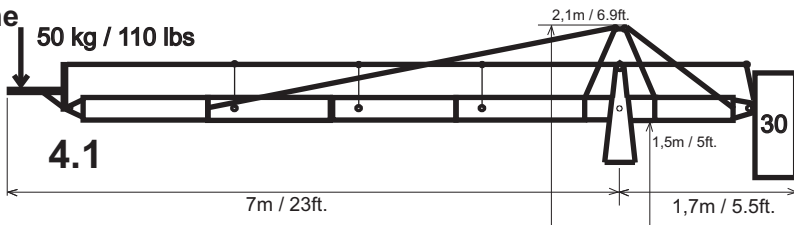


## Foxy Crane System:

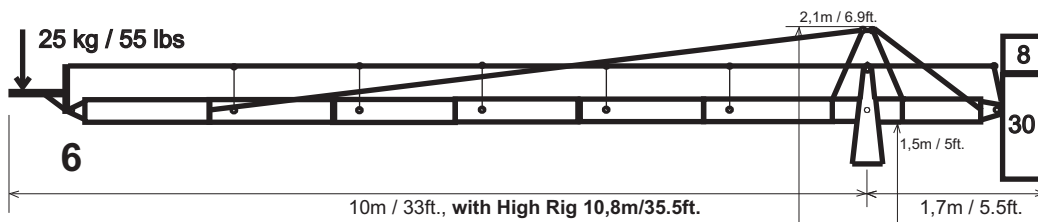
### Remote Versions:



max. Height/Höhe = 7,3m(24ft.)



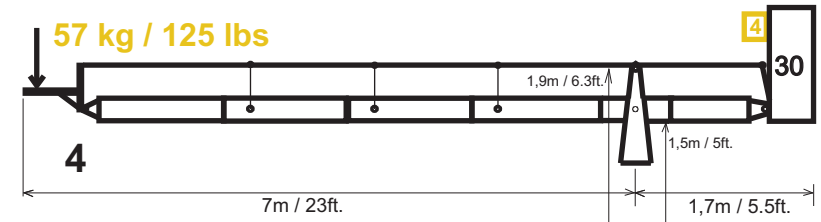
max. Height/Höhe = 8,5m(28ft.) With High Rig = 9,5m(31.5ft.)



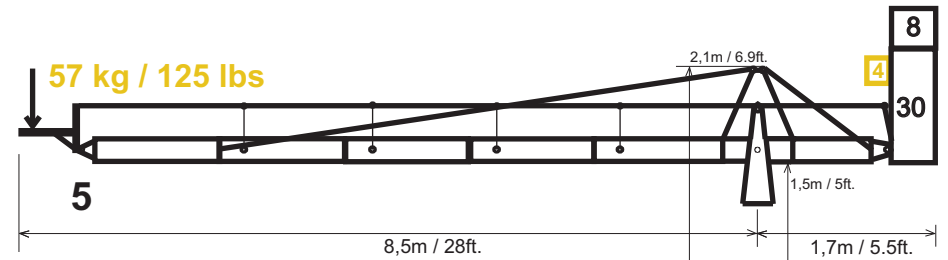
max. Height/Höhe = 9,7m(32ft.) With High Rig = 10,7m(35ft.)

## Foxy Crane System with PRO Upgrade:

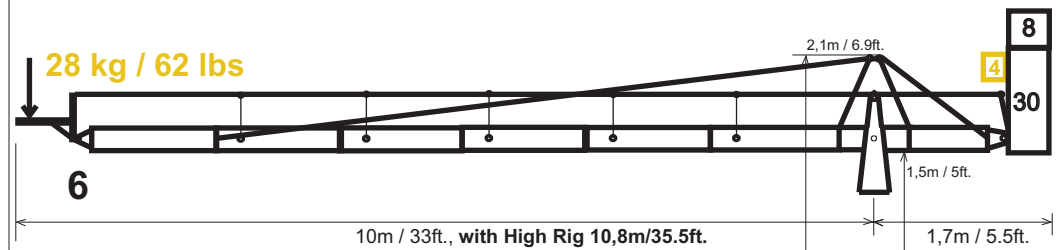
### Remote Versions:



max. Height/Höhe = 7,3m(24ft.)



max. Height/Höhe = 8,5m(28ft.) With High Rig = 9,5m(31.5ft.)

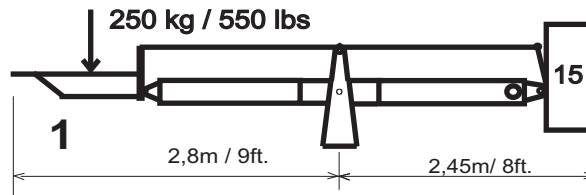


max. Height/Höhe = 9,7m(32ft.) With High Rig = 10,7m(35ft.)

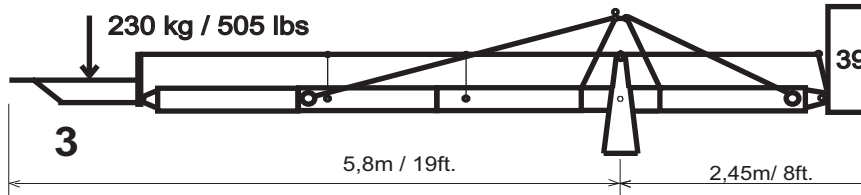
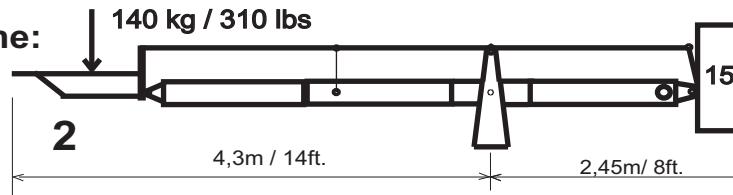
## Foxy Advanced Crane System:

### Platform Versions:

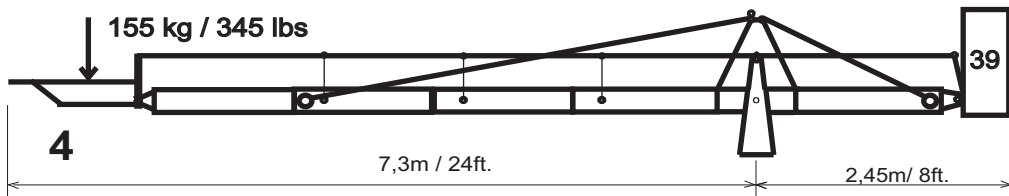
max. Height/Höhe:  
3,7m(12ft.)



max. Height/Höhe:  
4,9m(16ft.)



max. Height/Höhe: 6,1m(20ft.)

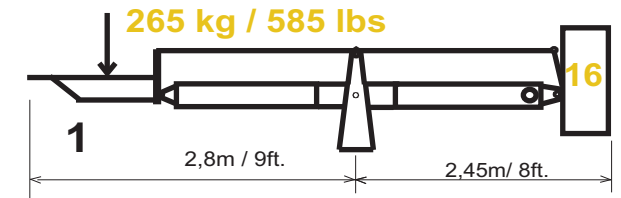


max. Height/Höhe: 7,3m(24ft.)

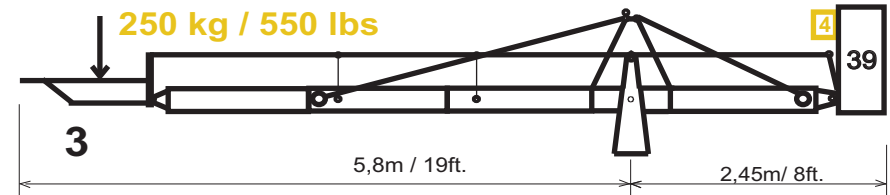
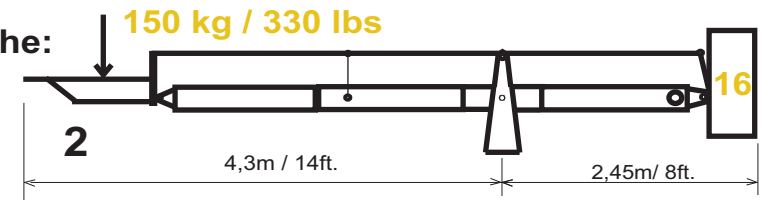
## Foxy Advanced Crane System with PRO Upgrade:

### Platform Versions:

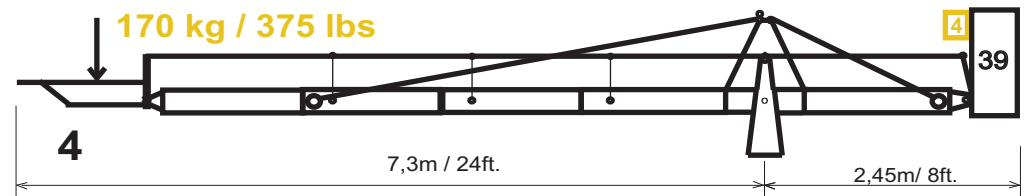
max. Height/Höhe:  
3,7m(12ft.)



max. Height/Höhe:  
4,9m(16ft.)



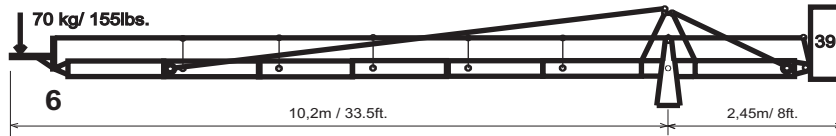
max. Height/Höhe: 6,1m(20ft.)



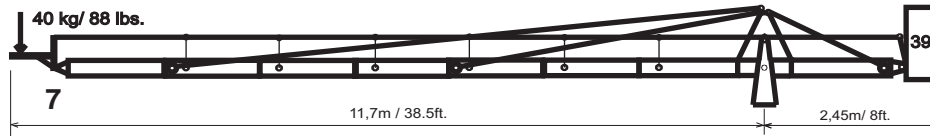
max. Height/Höhe: 7,3m(24ft.)

## Foxy Advanced Crane System:

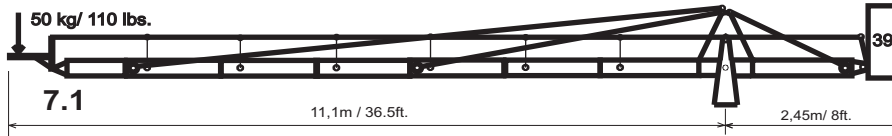
### Remote Versions:



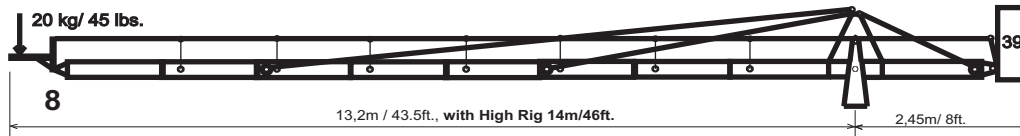
max. Height/Höhe: 9,8m(32.3ft.)



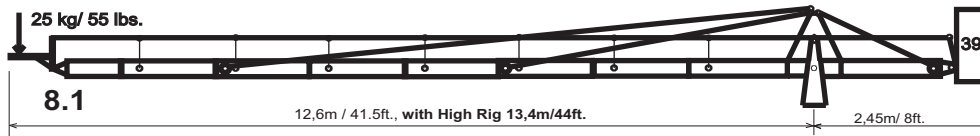
max. Height/Höhe: 11,1m(36.5ft.)



max. Height/Höhe: 10,5m(34.6ft.)



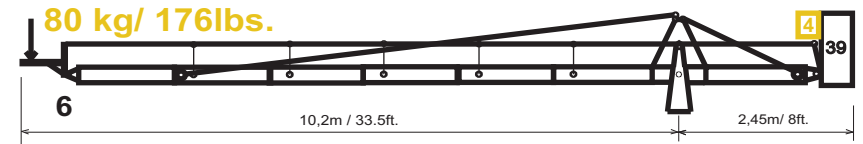
max. Height/Höhe: 12,3m (40.5ft.)



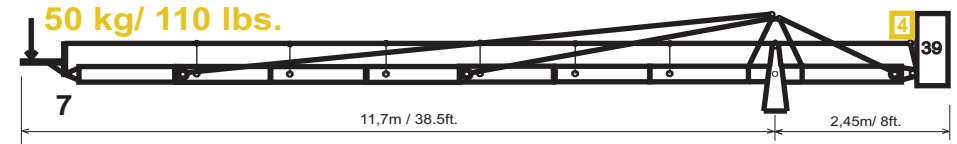
max. Height/ Höhe: 11,8m(39ft.)

## Foxy Advanced Crane System with PRO Upgrade:

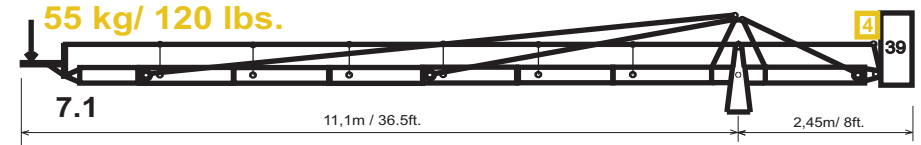
### Remote Versions:



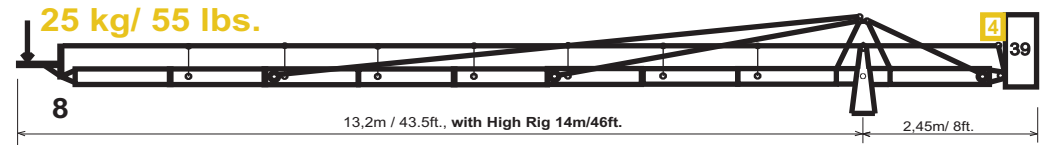
max. Height/Höhe: 9,8m(32.3ft.)



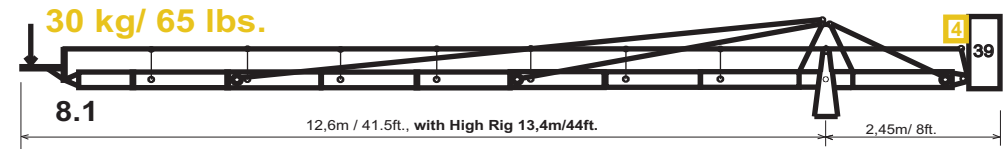
max. Height/Höhe: 11,1m(36.5ft.)



max. Height/Höhe: 10,5m(34.6ft.)



max. Height/Höhe: 12,3m (40.5ft.)



max. Height/ Höhe: 11,8m(39ft.)