

360-degree Bollards

INSTALLATION INSTRUCTIONS



ELECTRICAL SHOCK HAZARD

READ, UNDERSTAND, and FOLLOW these instructions before installing the equipment.

WARNING

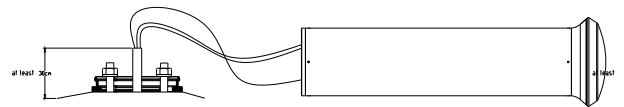
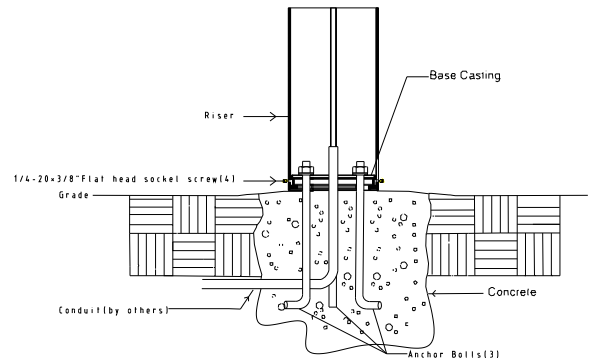
Disconnect the Electrical supply power at the service panel (fuse or circuit breaker box). Failure to do so could result in serious injury or death. Only qualified electricians should install this fixture and the installation **MUST** conform to the Electrical Code and all local codes and ordinances. Ensure that only proper tools, materials, and equipment are used to complete the installation.

SAFETY

- Proper grounding is required to ensure personal safety.
- Fixture should be mounted in locations where unauthorized personnel will not readily subject it to tampering.
- Do not use this equipment for anything other than its intended purpose.
- Servicing this equipment should be performed by qualified service personnel. Save these instructions.

INSTALLATION

- Secure anchor bolts to the ground with a Bolt Centre Diameter (BCD) of 5.748" (146mm)
- Install one nut followed by a flat washer onto each anchor bolt.
- Place the 360-degree Bollards base casting onto the anchor bolts.
- Install flat washers and nuts onto anchor bolts protruding through base casting.
- Level top edge of base casting by adjusting bottom nuts. Tighten the upper nuts progressively and evenly keeping base casting level.
- Make appropriate wiring connections as per wiring diagram.
- Place fixture over base casting and lock the fixture into the base casting.
- Tighten progressively and evenly the four 5/16-18 x 1" flat head socket screws at bottom of riser.



WIRING

- Check that the line voltage is correct.
- Connect fixture **GROUND** (green) wire to power supply **GROUND** (green) wire.
- Connect fixture **WHITE** wire to power supply **NEUTRAL** wire.
- Connect fixture **BLACK** wire to power supply **LINE** wire

