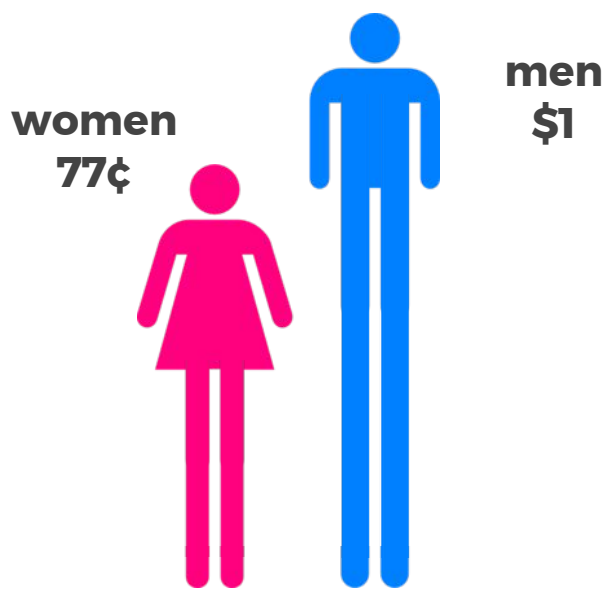


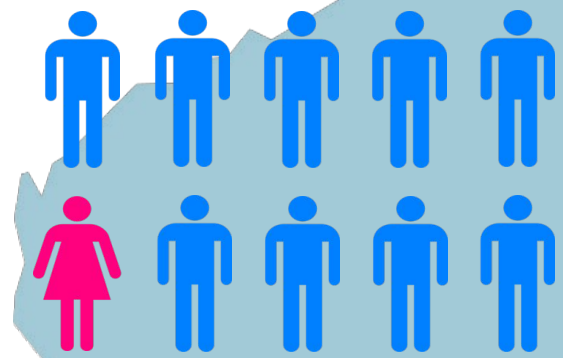
# 2016 Snapshot of Gender Equity in WA\*

## WA Earning Capacity

Base salary: 77¢ (WA) vs 82¢ nationally  
Full rem: 69¢ (WA) vs 77¢ nationally

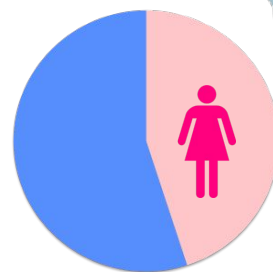


## WA CEOs & Chairs



## WA Workforce

2016 ABS



women 45%

## WA enterprises taking action

- 1 in 5** WA enterprises conducts a pay gap analysis
- 2 in 3** WA enterprises have a gender equity strategy
- 1 in 2** WA enterprises has a flexible working strategy

## More gender workforce data

- 1 in 3** managers in WA enterprises are women
  - 1 in 5** key management personnel in WA enterprises are women
- Closing the gap on national participation would boost GDP by **11%** (Goldman Sachs)