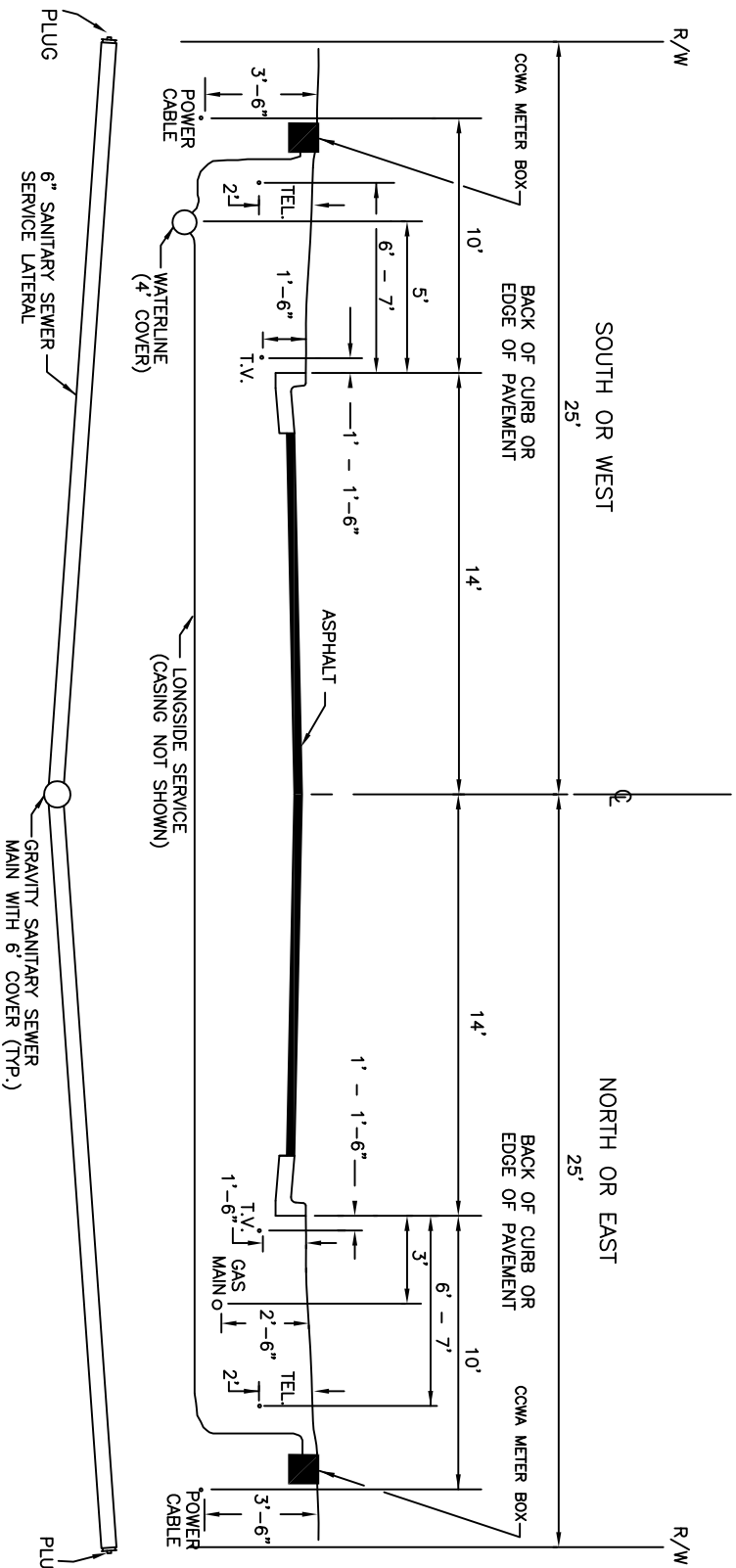


# CARROLL COUNTY WATER AUTHORITY

FIG. 1  
MAR. 2013



- NOTES:**
1. ON ALL UNCURRED TWO LANE STREETS, UTILITY LOCATIONS TYPICALLY AT THE SAME DISTANCES FROM THE CENTERLINE AS SHOWN ABOVE.
  2. RIGHT-OF-WAY WIDTH VARIES WITH LOCATION. TYPICAL RIGHT-OF-WAY WIDTH OF TWO LANE RURAL ROADS IS 60'.
  3. POLES FOR OVERHEAD UTILITIES SHALL BE LOCATED A MINIMUM OF 20' FROM THE CENTERLINE OF THE ROAD ON TWO LANE STREETS.
  4. DRAWING SHOWS DEFAULT LOCATION OF ALL UNDERGROUND UTILITIES, SOME OF WHICH MAY NOT BE PRESENT, DEPENDING ON LOCATION.
  5. DEVELOPER FULLY RESPONSIBLE FOR INTEGRITY OF MAIN AND ALL RELATED APPURTENANCES (SERVICE LINES, METER BOXES, ETC.) FOR 12 MONTHS AFTER CCWA ACCEPTANCE.
- UTILITIES PROTECTION CENTER, INC.  
811 OR 1-800-282-7411

# STANDARD LOCATIONS FOR UNDERGROUND UTILITIES IN CARROLL COUNTY