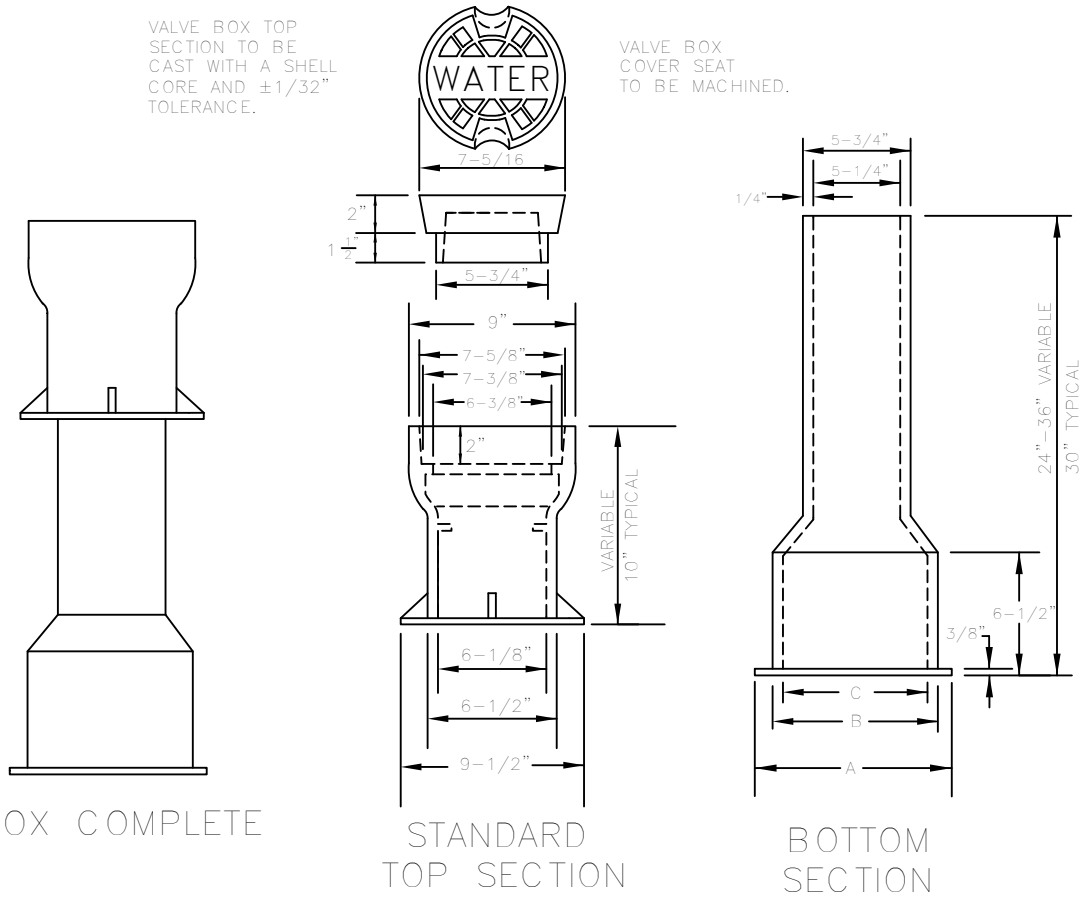


CARROLL COUNTY WATER AUTHORITY

FIG. 6
OCT. 2015

VALVE BOX TOP SECTION TO BE CAST WITH A SHELL CORE AND $\pm 1/32"$ TOLERANCE.

VALVE BOX COVER SEAT TO BE MACHINED.



24" x 24" CONCRETE PAD AROUND VALVE BOX REQUIRED IN UNPAVED AREAS.

NOTES:

1. UNLESS NOTED OTHERWISE, CAST IRON SHALL CONFORM TO ASTM SPECIFICATIONS A48 LATEST REVISION FOR CLASS 20 GREY IRON CASTINGS AND BE OF DOMESTIC MANUFACTURE.
2. CASTINGS SHALL BE TRUE, FREE OF HOLES, CLEANED ACCORDING TO GOOD FOUNDRY PRACTICE AND GROUND AS NECESSARY TO REMOVE FINIS AND ROUGHNESS.
3. FINISHED CASTINGS SHALL BE COATED INSIDE AND OUTSIDE WITH COAL TAR PITCH VARNISH AS INDICATED IN AWWA SPECIFICATIONS C110 LATEST REVISION. COATING MAY BE APPLIED COLD AND SHALL THOROUGHLY COVER ALL METAL SURFACES. FINISHED COATING SHALL BE SMOOTH, GLOSSY, NOT BRITTLE WHEN COLD, NOT STICKY WHEN EXPOSED TO THE SUN, AND SHALL ADHERE TO THE METAL AT FIELD TEMPERATURES.
4. WHEN COATING IS COMPLETE, LID SHALL FIT SNUGLY WITHOUT ROCKING.

BOTTOM SECTION	A	B	C
4"-6"	9"	8"	7"
8"	9-1/2"	8-1/2"	7-1/2"
10"-12"	10-1/4"	9"	8"

TYPICAL 4" - 12" SCREW TYPE VALVE BOX ASSEMBLIES