

Improve leasing,
revenue, and asset
value with portfolio
performance
software.

re_nmarkably™

Co-founded by—and for—multifamily real estate marketing professionals

Remarkably is a portfolio performance platform for multifamily real estate innovators. We are passionate about helping the nation's top property owners, investors, developers, and managers reach their leasing, occupancy and revenue goals with portfolio-grade marketing operations and analytics software. Our software enables customers to achieve significant and measurable results at all stages of the real estate lifecycle, from ground-up developments to repositioned and stabilized properties.



Coherent Data

Quantify your property's campaign performance and benchmark against others. Historical baseline reports, progress reports, and campaign models provide coherent views into how your marketing has performed in the past, where you are now, and what you need to do to get to goal.



Actionable Insights

Surface actionable campaign insights into key elements of your leasing campaign. From addressable market analysis to progress against targets, change over previous period, and likelihood of achieving your objectives, a mix of software and analyst support helps ensure you stay on track.



Measurable Results

Improve marketing and leasing success with recommended actions and real results. Data and insights are interesting, but they alone lack impact on your leasing progress. We help you implement plans and tactics to manage your unique campaign risks and seize key opportunities.

Optimize revenue and investments with marketing analytics

Ideal for Owners, Asset Managers, and Property Managers

Package options include:

Customized Portfolio Views

View your portfolio by owner, property manager, location, or fund, include or exclude select properties and performance metrics, and save custom views of your favorite reports.

Comparative Property Insights

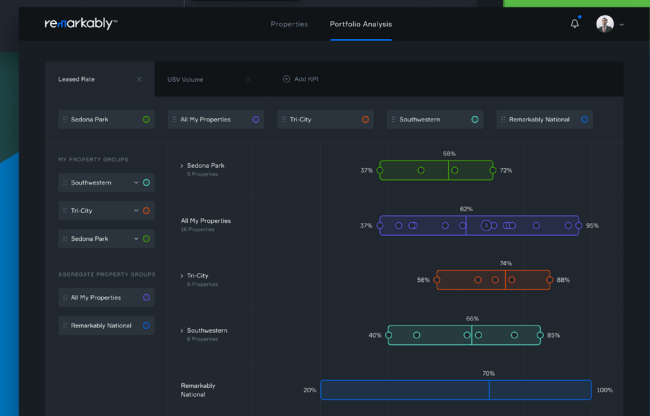
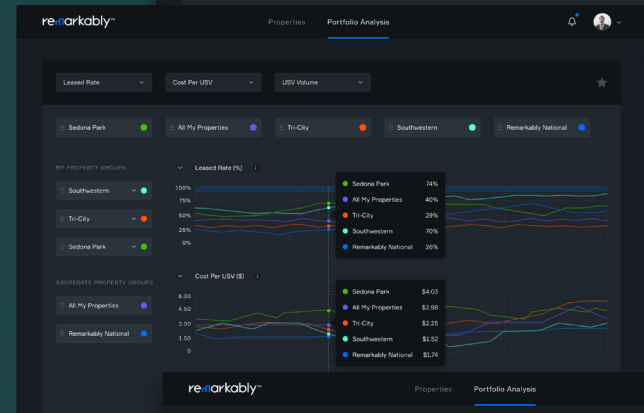
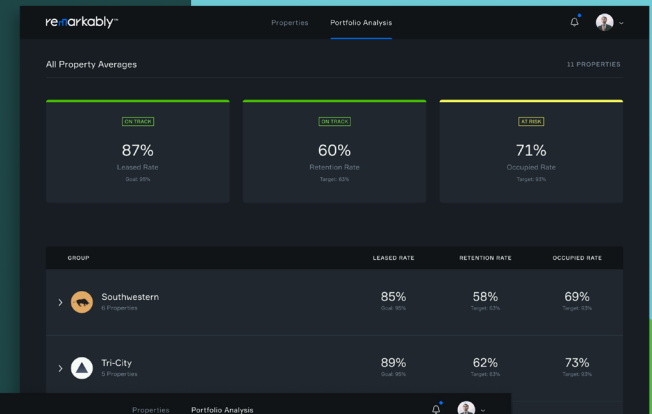
Gain insight into highest and lowest performing properties, and averages across properties, including key marketing and leasing volumes and conversion rates.

Time Based Analysis

View marketing and leasing trends using time series line graphs and bar charts to inform investment decisions for the best and fastest path to stabilization.

Request a demo today:

hello@remarkably.io | 1 800 266 9255





Achieve or maintain asset stabilization

Ideal for Owners, Asset Managers, and Property Managers
Package options include:

Historical Campaign Analysis

Baseline reports offer a clear, summary-level understanding of historical marketing performance over a select time period, and indicate where key issues and opportunities lie.

Strategic Campaign Modeling

Marketing performance scenarios illustrate possible approaches to hitting your unique goal, including deadline-, investment-, revenue-, and ROMI-driven strategies.

Campaign Performance Reporting

Comprehensive marketing and leasing performance reports provide instantaneous insight into what's working, what's not, and what to change before it's too late.

Request a demo today:
hello@remarkably.io | 1 800 266 9255

Lease up a new development, from pre-TCO through stabilization

Ideal for Developers, Capital Partners, and Marketing Managers

Package options include:

Market Analysis

Detailed views of your asset's unique community within a geographic boundary, or combination of boundaries and feeder zip codes, to understand key revenue opportunities.

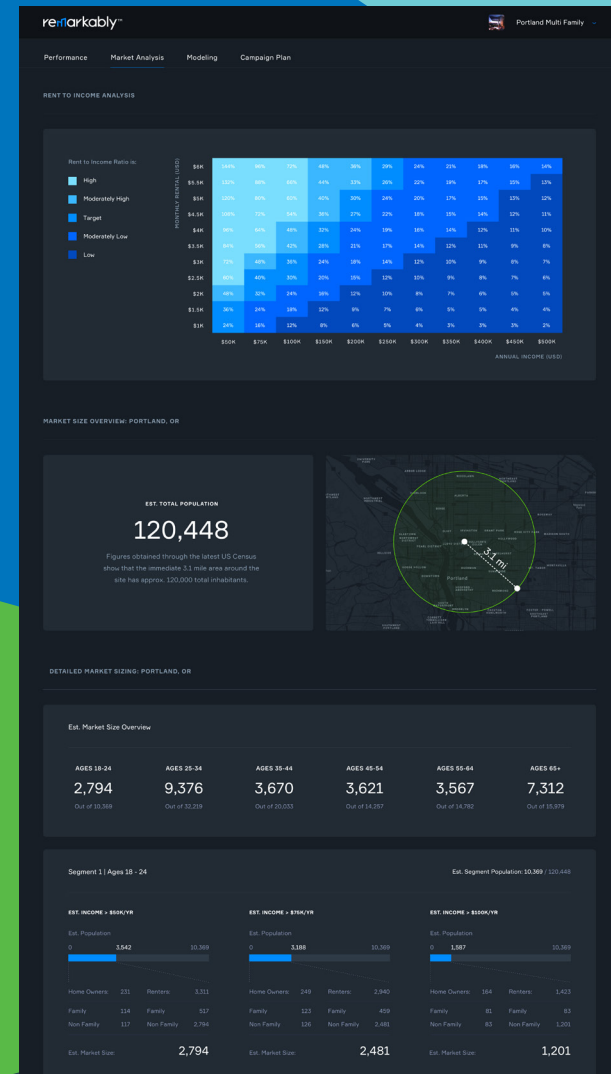
Lease-Up Modeling

Robust analysis of the campaign investment, lease-up schedule, leasing revenue, and ROMI required to achieve your goals—segmented by pre-TCO and post-TCO periods.

Campaign Planning

Detailed programmatic and tactical plan content designed to achieve your specific brand and reputation, demand creation, leasing enablement and marketing intelligence objectives.

Request a demo today:
hello@remarkably.io | 1 800 266 9255



Bolster your campaign efforts with a dedicated, expert support

Expert multifamily marketing and analyst consulting support included at no additional cost to all software subscribers; ideal for all user types.



Onboarding and Training

Full-service data entry and future platform integration with lightweight user training ensures a fast and easy onboarding process for new customers.



Consulting Support

Dedicated marketing support for your team, property and campaign, available for ad-hoc consults by phone or email, as often as is required to ensure your success.



Quarterly Presentations

Regular campaign performance presentations to your project team ensure clarity and communication among key stakeholders to eliminate confusion and guesswork around progress.

Request more information:

hello@remarkably.io | 1 800 266 9255

Become an early adopter today.

re**n**larkably™

remarkably.io

hello@remarkably.io

1 206 535 6246

1 800 266 9255

2284 West Commodore Way

Suite 200

Seattle, WA 98199

Copyright 2019 Remarkably, Inc.

All rights reserved.