



Product Description

EZ Grout was designed to repair damaged control joints, fill pin holes and repair cracked chipped or damaged concrete. EZ Grout is rapid setting and high strength and mixes at a 1:1 ratio. Fills holes and cracks prior to polishing to ensure floor has a consistent profile. Ideal for use with exposed and polished concrete.

Preparation

(The following steps are recommended for best results)

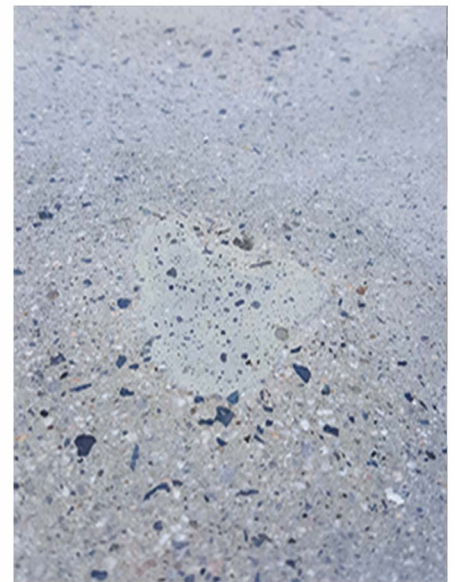
1) Thoroughly clean the surface assigned for EZ Grout application by removing all presence of oil, dirt, and other contaminants. Do not apply if concrete is frozen, dirty or has standing water.

Mixing

EZ Grout mixes at a 1:1 ratio between PART A and PART B

Application Directions

- 1) For small hole repair mix 1 part A to 1 part B in a small mixing cup, then add grouting compound and mix
- 2) Fill holes with grouting mixture and wait until completely dry
- 3) After dry use a handgrinder to level the repairs.
- 4) For small pinholes mix 1 part A to 1 part B in a small mixing cup
- 5) Apply a thin coat to the floor using a metal finishing trowel
- 6) Wait for the floor to completely dry
- 7) After dry begin the EZ Polish system and continue as normal



Maintenance

Spills of staining agents or acidic etching agents including acidic food substances (e.g. vinegar, pickle juice) should be cleaned up immediately to minimize damage to surface. Remove dust and debris with Microfiber pad or dry mop. Surface should be cleaned regularly using an automatic floor scrubber with EZ Maintenance Cleaner mixed with water according to manufacturer's directions. Reapplication of Superguard once every two years is recommended, but more may be required depending on wear and usage conditions.

Storage

Keep containers upright and tightly sealed. Do not allow product to freeze, nor use if it has been frozen. Keep under 110° F

Cleaning

Clean tools and equipment immediately with water. Always remove rundown and spills immediately.

Coverage

Depends on how porous the floor is

