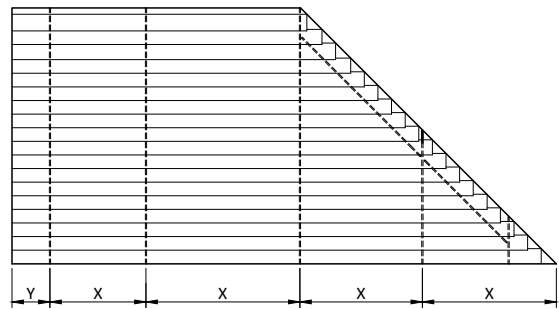
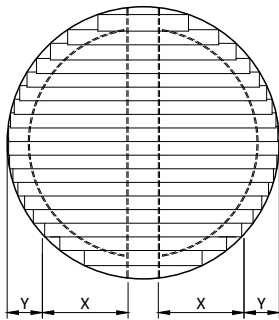
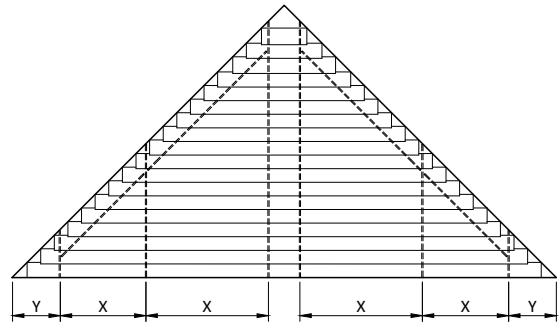
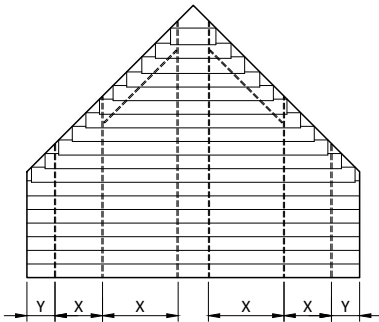
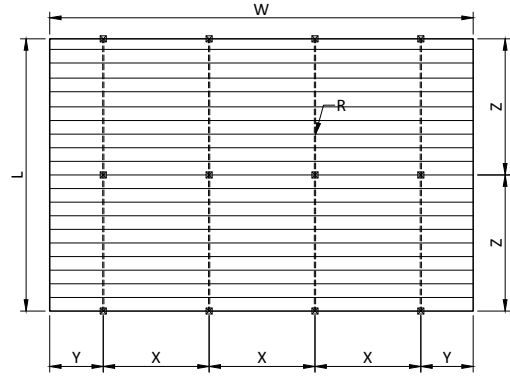



88mm extruded louvers



		
width	W	
length / drop / height	L	
rack arm distance	X	
slat side overhang	Y	
support distance	Z	
standard rack arm 35 mm		
heavy duty rack arm 80 mm		
box rack arm 100 mm		
number of rack arms	R	
		INTERNAL
		max. 20m ²
		max. 140 cm
		max. 40 cm
		max. 180 cm
		max. 300 cm
		max. 420 cm
		minimum # rack arms
		020-220 cm = 2 pcs
		221-360 cm = 3 pcs
		361-500 cm = 4 pcs
		501-600 cm = 5 pcs
		EXTERNAL
		max. 18m ²
		max. 130 cm
		max. 30 cm
		max. 150 cm
		max. 280 cm
		max. 350 cm
		minimum # rack arms
		020-190 cm = 2 pcs
		191-320 cm = 3 pcs
		321-450 cm = 4 pcs
		451-580 cm = 5 pcs

Larger systems as max* can be calculated and designed by Horiso.



E: info@horiso.com.au | T: +61 2 8755 4500

horiso.com.au