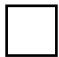

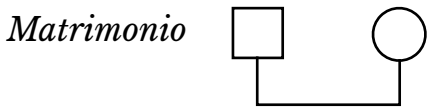


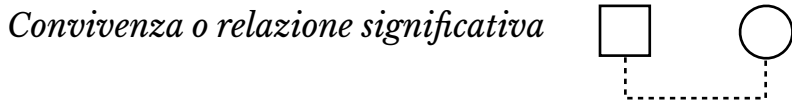
MODULO 1: Genosociogramma

Sesso maschile 

Sesso femminile 

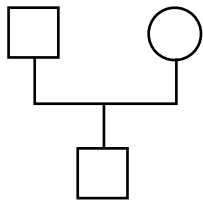


(Uomo a sinistra, Donna a destra)

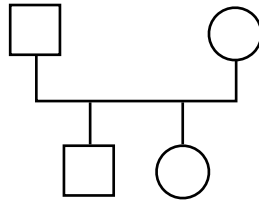


Nascita di figli: da sinistra a destra per ordine di nascita

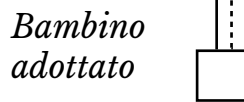
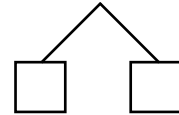
1st genito: figlio




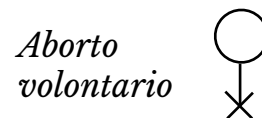
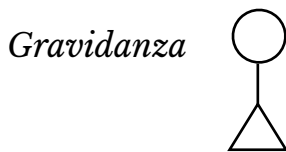
2nd genito: figlia



Gemelli omozigoti



Decesso 



Legame forte



Relazione conflittuale



Legame forte ma conflittuale