





MODULE 1: Genosociogram

Male 

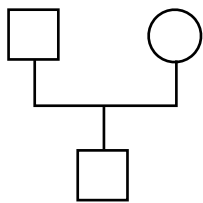
Female 

Marriage  (Man on the left, Woman on the right)

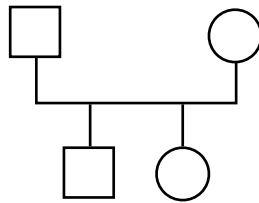
Cohabitation or significant relationship 

Birth of children: from left to right in order of birth

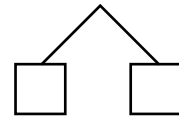
1st born: Son

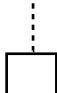


2nd born: Daughter





Homozygous Twins




Child in foster care 

Adopted Child 

Deceased 

Pregnancy 

Spontaneous abortion 

Voluntary abortion 



Strong relationship



Conflictual relationship



Strong but conflictual relationship