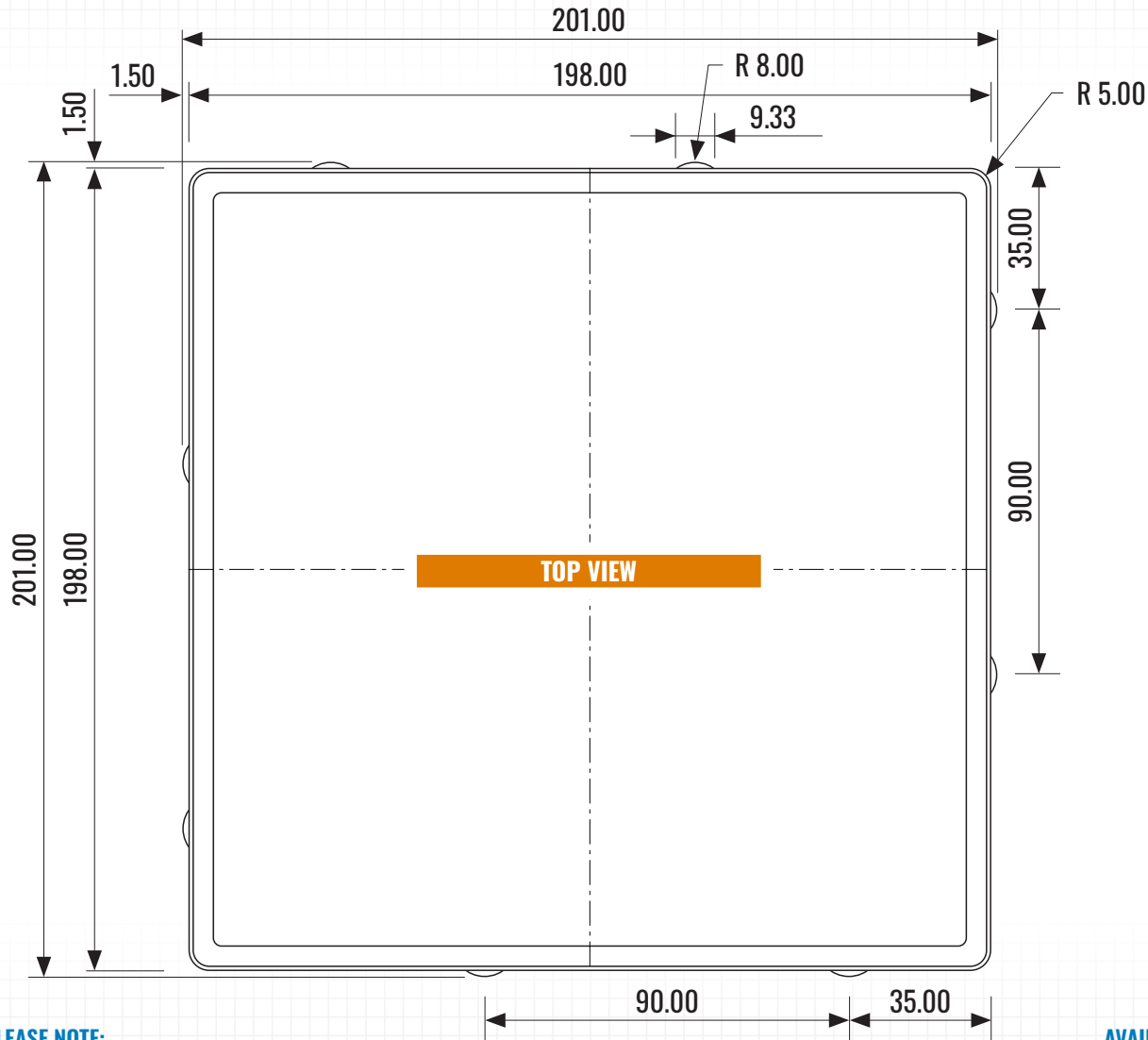


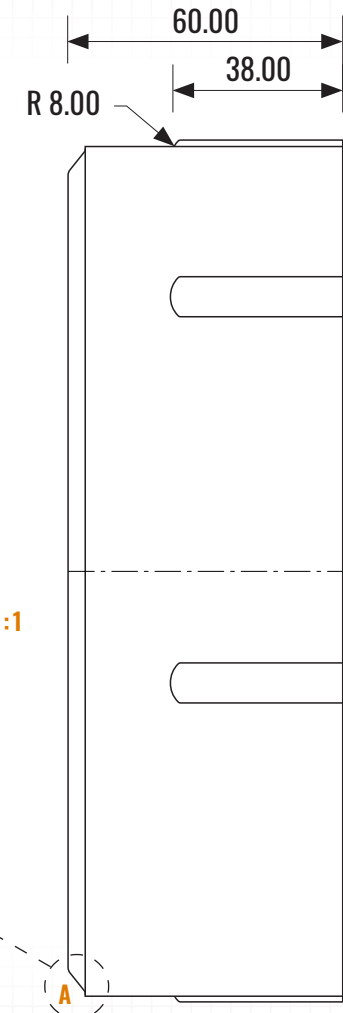


Casey Concrete Ltd. 198x198 mm (8x8 in.) BORDER STONE

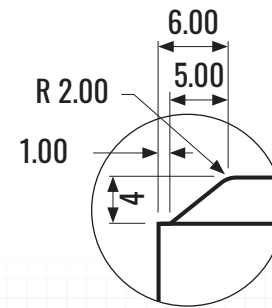
caseyltd.ca



SIDE VIEW



DETAIL "A" SCALE 2.61:1
ROTATED 90°



PLEASE NOTE:

Products are made from natural material sources and therefore colour variations are common. Efflorescence is also a common occurrence with all concrete and concrete products. Efflorescence does not affect the quality of the product and will fade over time or can be removed with cleaning products.

PACKAGING

Pieces Per Pallet: 240
Weight Per Piece: 5.44 kg (12 lbs)
Weight Per Pallet: 1310 kg (2880 lbs)
Coverage Per Pallet: 103.3 sq. ft

DIMENSIONAL TOLERANCES:

Meets the requirements of CSA A231.2 Concrete Pavers
Length: -1 mm to +2 mm
Width: -1 mm to +2 mm
Height: -3 mm to +3 mm

AVAILABILITY:

Available in smooth top surface
Available in 60 mm thickness

DE-ICING SALT DURABILITY MASS LOSS (max.):

225 g/m² after 28 cycles, or
500 g/m² after 49 cycles

PHYSICAL PROPERTIES:

Meets the requirements of CSA A231.2 Concrete Pavers
Compressive Strength: Min 50 MPa @ 28 Days
Absorption (%): 5.5% Maximum @ 28 Days
Freeze/Thaw: Not exceed 1% weight loss

