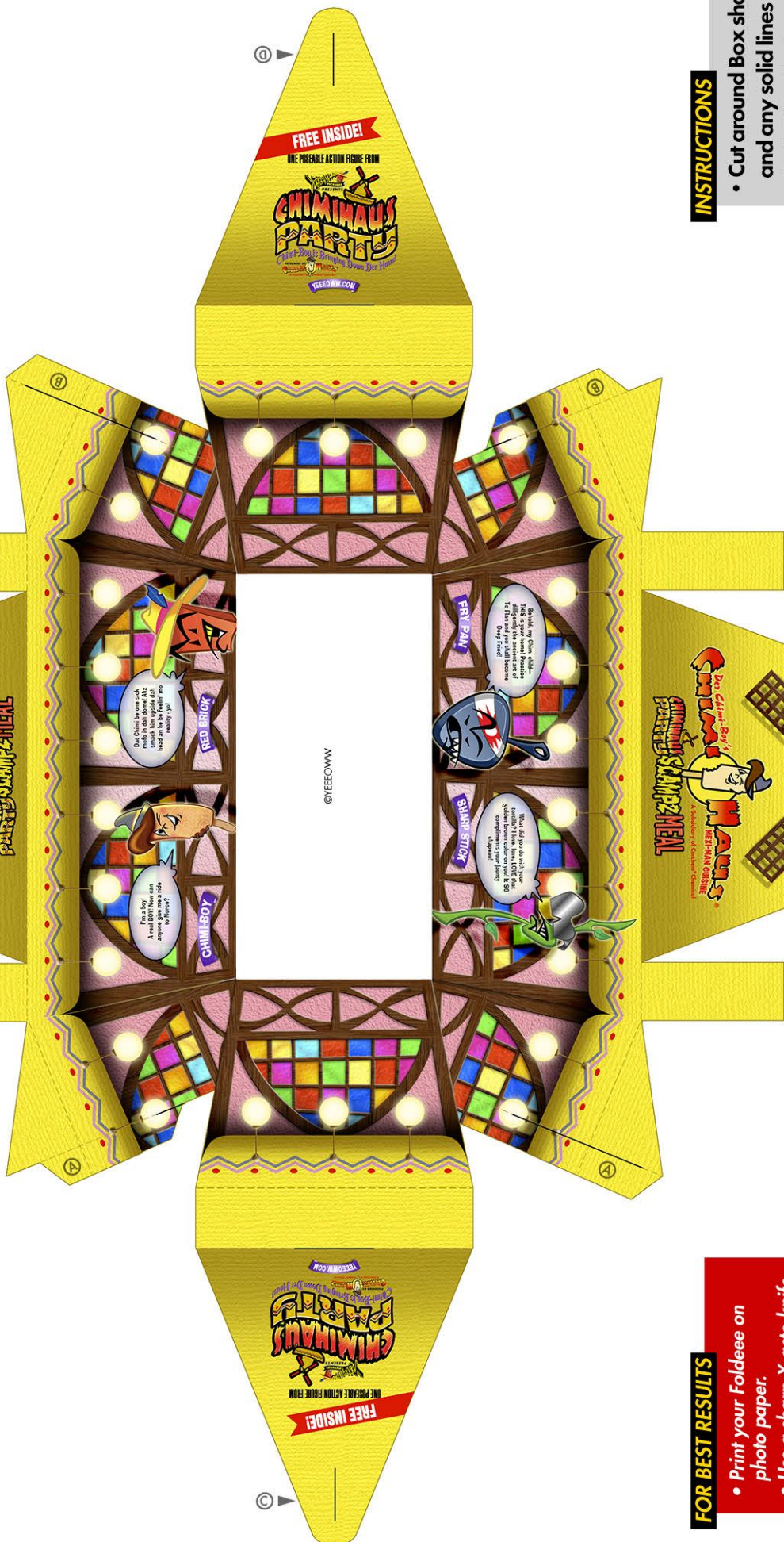


FOLDEEE



FOR BEST RESULTS

- Print your Foldeee on photo paper.
- Use a sharp X-acto knife and a metal straight edge to do the cutting. X-acto knives are EXTREMELY sharp so use with caution!

INSTRUCTIONS

- Cut around Box shape and any solid lines (including slots).
- Fold on dotted lines.
- Put Tab A into Slot A, Tab B into Slot B, etc.
- Enjoy!