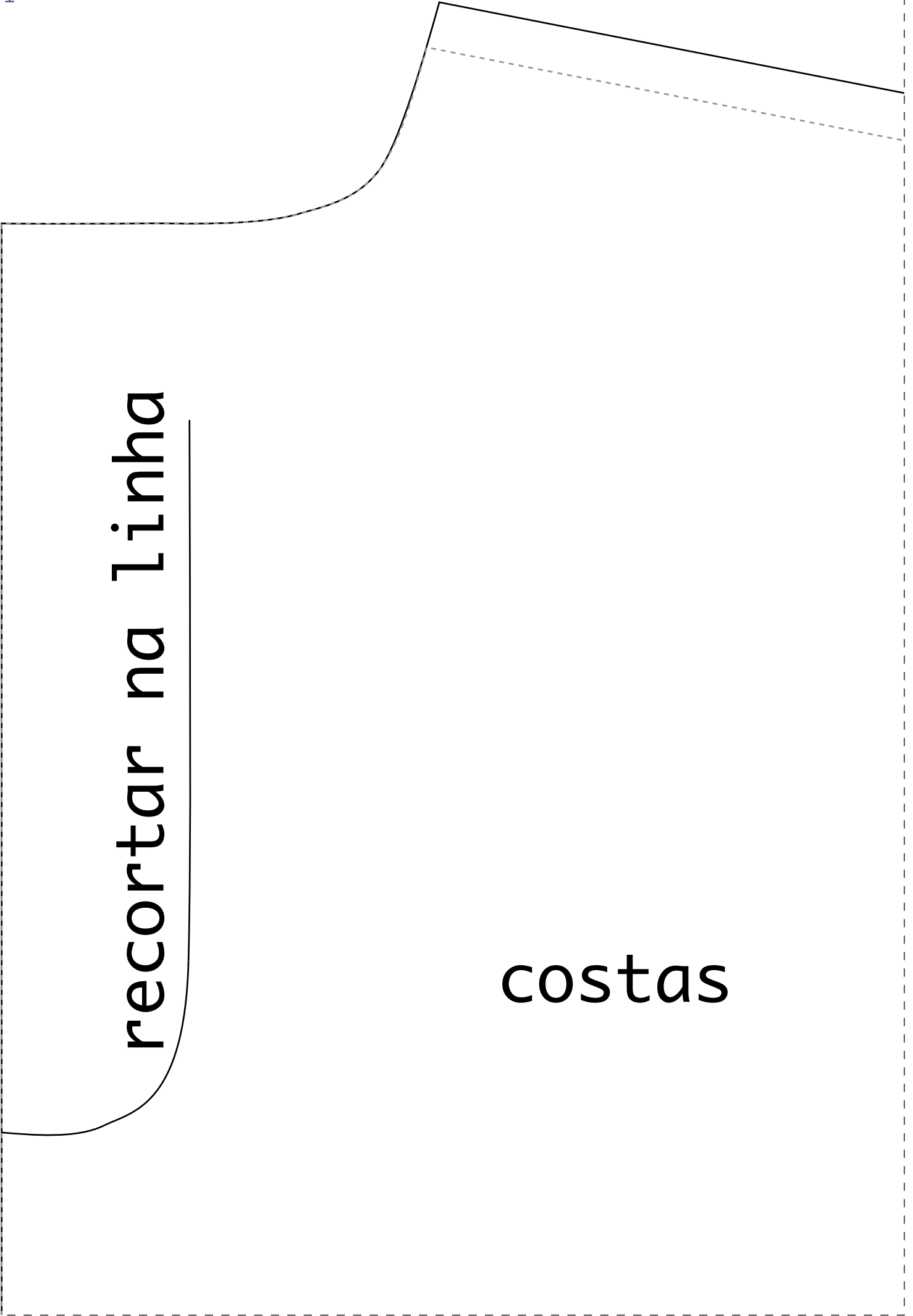


1-1

recortar na linha

costas



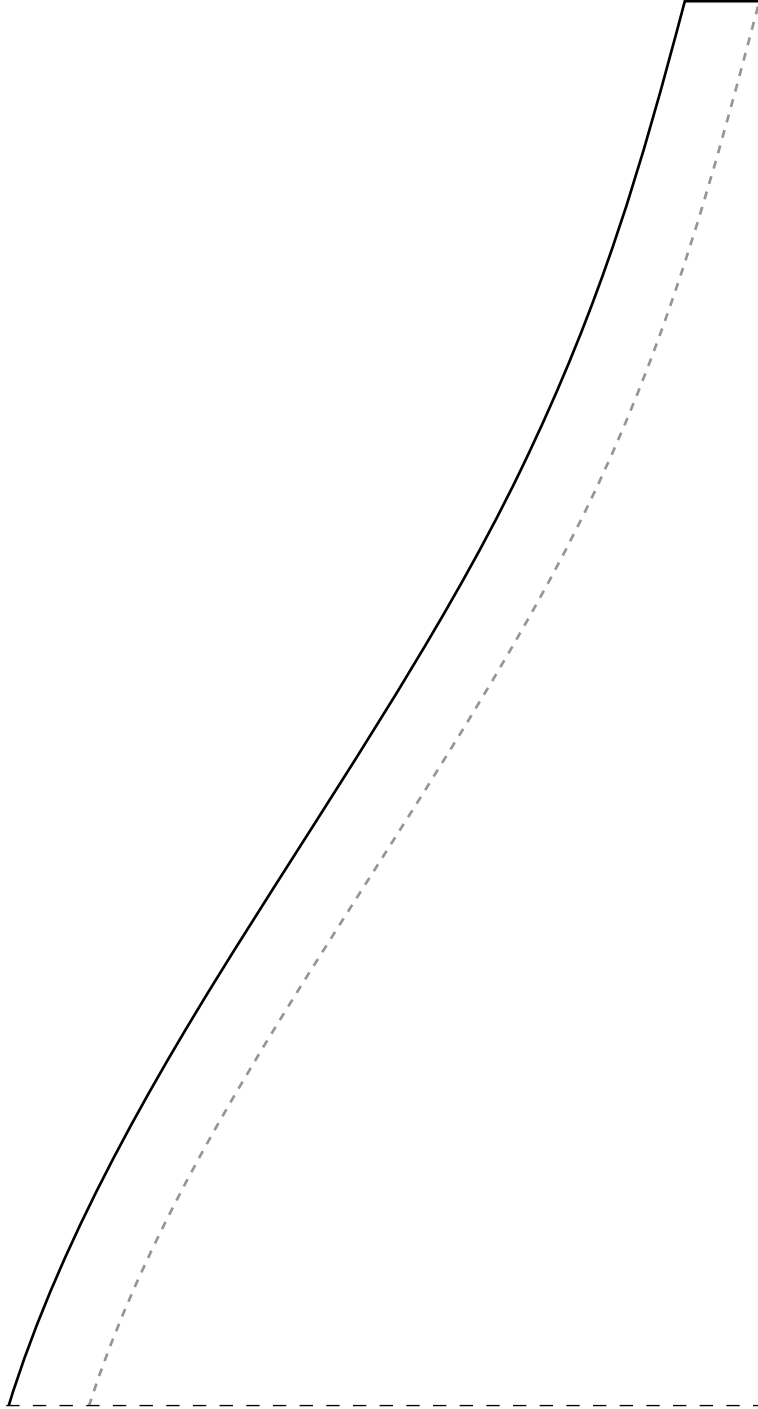


na Linha para amarrar o jaleco

4-1

recortar

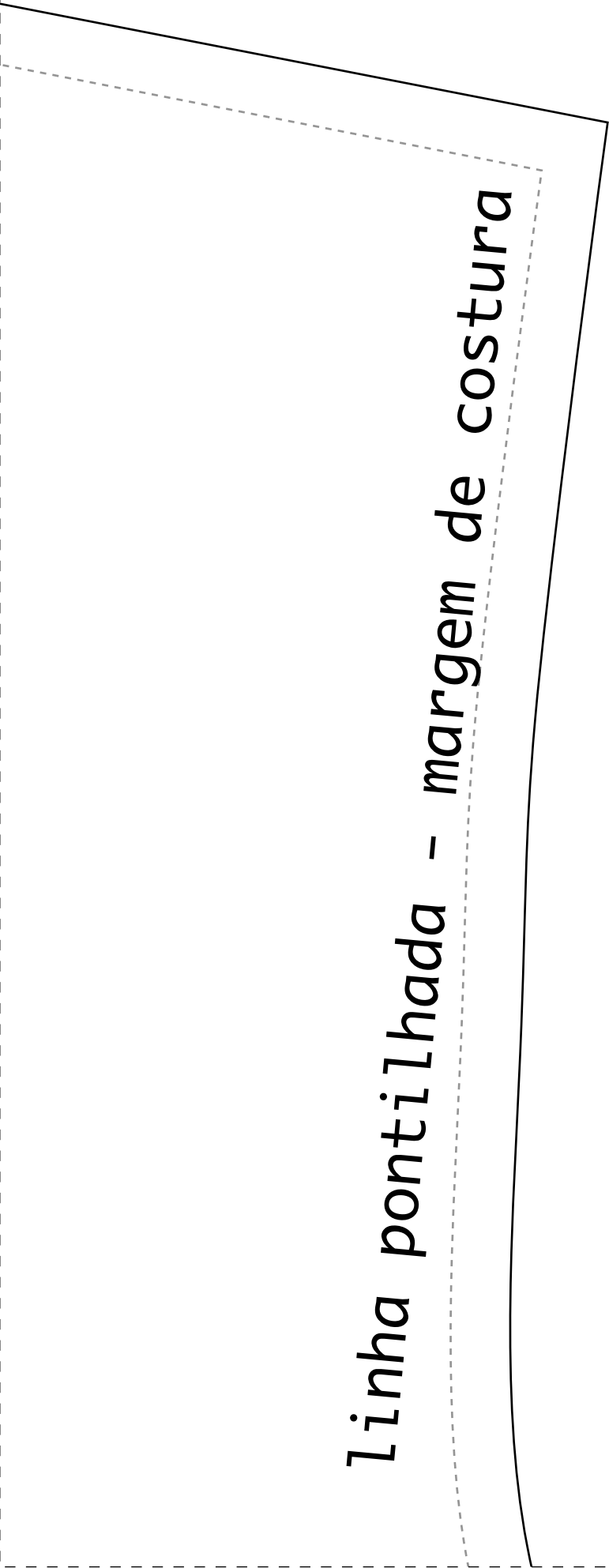
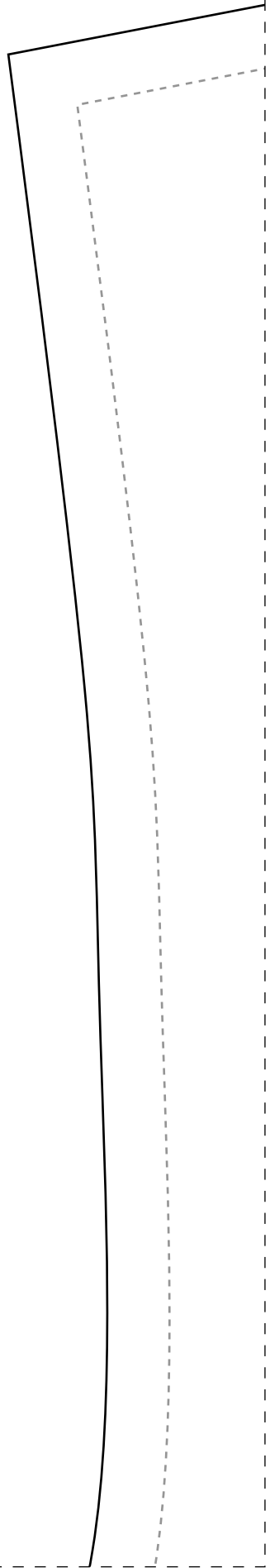
cortar 2X

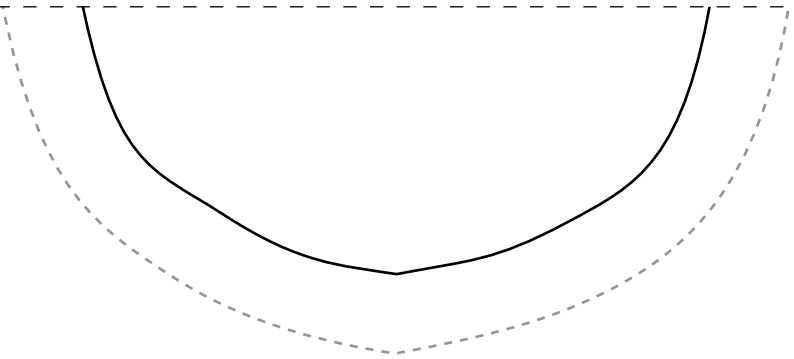


5-1

Linha pontilhada -

*Linha pontilhada - margem de costura*

A diagram of a garment piece, possibly a collar or a sleeve cuff, shown in a perspective view. It has a curved outer edge and a straight inner edge. A dashed line is drawn parallel to the inner edge, representing the seam allowance. The text 'Linha pontilhada - margem de costura' is written vertically along this dashed line.



jaleco de proteção - e



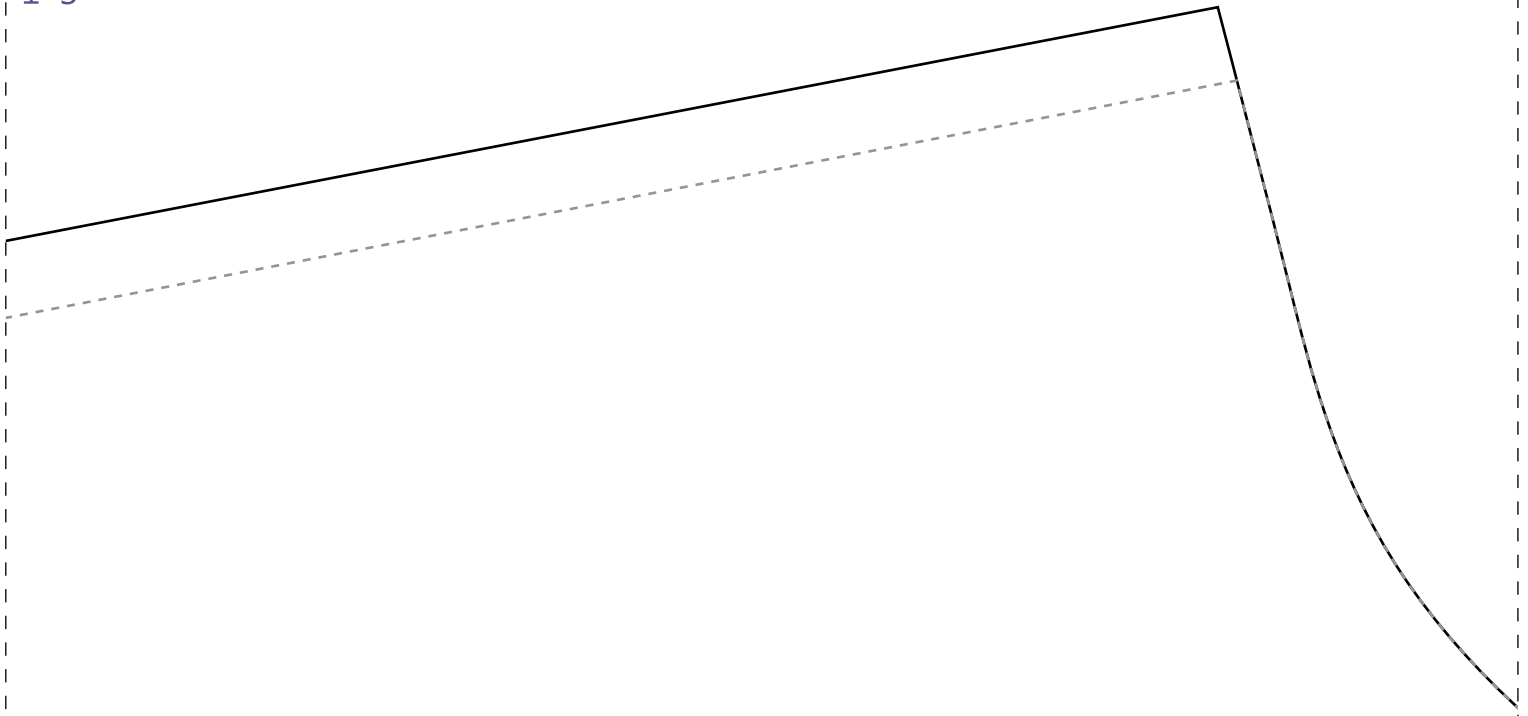


jaleco de proteção  
manga

margem de costura

A diagram illustrating the concept of seam allowance. It features a solid black line representing the seam line, which slopes downwards from left to right. A dashed black line runs parallel to the solid line, positioned above it, representing the cutting line. The space between these two lines is the seam allowance. The text 'margem de costura' is written in a sans-serif font, following the slope of the lines.

1-3



frente

corpo



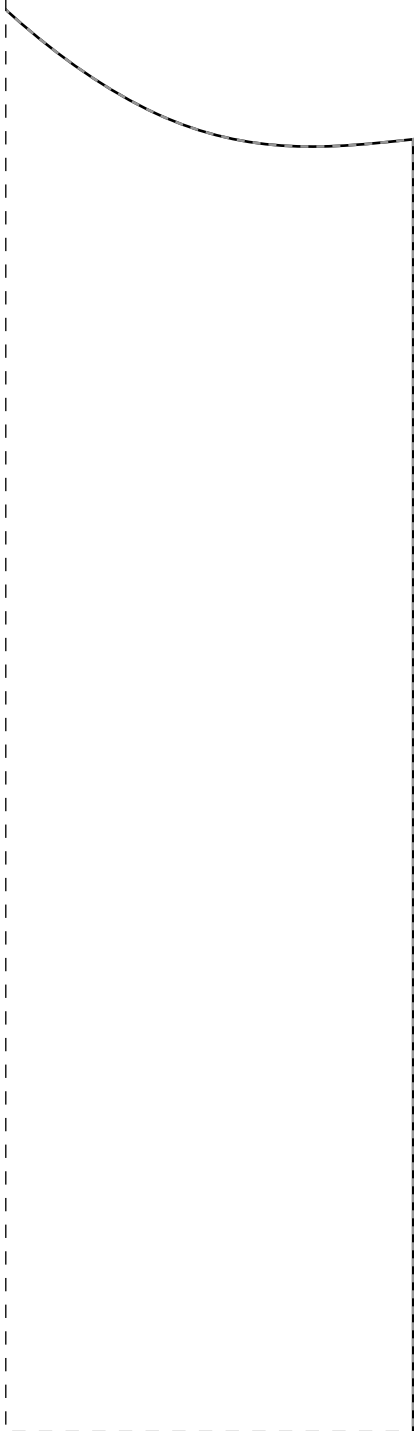
dobra do tecido

costurar elástico

na barra da manga

5-3







dobra do tecido



ии дии тт уу шшшшшшшшш

