

shs | Stroud High Sixth Form



PROGRAMME OF STUDY

SUBJECT PATHWAYS

At Stroud High Sixth Form (SHSF), you will follow a core curriculum taken from our suite of 26 A Level subjects. What is really exciting here is that you will choose your own pathway and then work alongside specialists in that field who will guide and mentor you on your journey.

The majority of our students choose to take 3 A Level subjects pursuing their passions and interests. A small number opt for a fourth A Level - for example, Further Maths.

Alongside your A Level subjects you will be able to choose an Additional Qualification:

- **Extended Project Qualification (EPQ)**
AQA Level 3 programme of study worth up to 28 UCAS points
- **Gold Crest Award**
STEM qualification that can be used as part of the Duke of Edinburgh Award
- **Gold Arts Award**
AQA Level 3 qualification worth up to 16 UCAS points
- **Core Maths**
AQA Level 3 course worth up to 20 UCAS points
- **SHS - Sport, Coaching and Leadership**
Recognised qualifications in sports leadership, refereeing and umpiring

For further information on our SHSF Programme of Study please visit:

www.stroudhighsixthform.co.uk/subjects

Please note that all courses are subject to change depending on student numbers. Any changes to the offer will be announced in good time.





A LEVELS OFFERED

Art & Design - Fine Art
Art & Design - Graphic Communication
Art & Design - Photography
Art Textiles
Biology
Business
Chemistry
Computer Science
Drama and Theatre
DT - 3D Product Design
Economics
English Literature
French
Geography
German
History
Mathematics
Maths - Further
Music
Philosophy, Ethics and Belief
Physical Education
Physics
Politics and Government
Psychology
Sociology
Spanish



ART & DESIGN SUBJECTS

Fine Art - Graphic Communication - Photography

The art industry is the third largest income generator in the UK and there are numerous possibilities for art-based careers. Many of our students go on to follow courses in non-related art subjects and take with them transferable skills and a greater aesthetic awareness. The aim of our courses is to provide maximum flexibility and are tailored to meet your particular strengths and interests. In past years we have visited New York, London, Paris, Barcelona and St Ives on residential trips, as well as day and field trips to local and national spaces or exhibitions.

Why Study With Us?

In recent years our department has achieved some of the highest grades in the school which is particularly helpful when applying to top university courses. Some of our students have achieved A* in two art endorsements.

'Doing art has always been really important to me.... I think the biggest thing I appreciated from the SHS art department was that it was a brilliant space to work in, we could go to the room at the back of the classroom and work during our study periods and lunchtimes..... I found that the academic side of the course was really interesting; I loved learning about visual media, different artists' work and their methods of communication. When I made the decision to apply to study Illustration at University, I had a lot of guidance and support from my teachers..... The project that I am most proud of was with Yale University Press, illustrating A Little History of Economics. It might sound boring, but this was a really varied and challenging project, and I am still a bit amazed that you can walk into a bookshop and pick up something with my artwork in it!

Hazel Partridge, former student, post-graduate of Illustration at Falmouth University; now a professional graphic illustrator

Where Can Art Subjects Take You?

Our A Level Art & Design students have gone on to study for a variety of creative courses including:

Advertising & Brand Design | Animation and Visual Effects | Art and English Literature | Art Foundation | Architecture | Design for Film and Television | Fashion Design | Fashion and Textile Design | Fashion Photography | Graphic Design | Graphic and Communication Design | Illustration | Interior Architecture | Marketing, Advertising and Branding | Photography, Editorial and Advertising | Press and Editorial Photography

Universities Attended

Brighton | Cambridge | Central St. Martins | Falmouth | Gloucestershire | Goldsmiths | Leeds College of Art | Leeds | Lincoln | Manchester Metropolitan | Nottingham Trent | Reading | South Glos & Stroud College | Swansea | University of the West of England

Entry Requirements

GCSE Grade 6 or above in Art & Design or Design Technology



ART & DESIGN TEXTILES

Our Art & Design Textiles course allows you to demonstrate high levels of innovation and creativity. You will explore a wide range of Textile skills enabling you to refine your understanding of surface pattern and design and appreciate the relationship of form and function and working to the constraints of a brief.

You will produce practical and folio work following projects in a range of disciplines including fashion design, fashion textiles, costume design, interior design, art textiles and installed textiles. You will study a variety of textile methods such as fabric printing and colouring, fabric construction and stitching (appliqué, patchwork, padding, quilting and/or embroidery).

There are a huge variety of careers that can follow a textile-based degree, as we live in a world surrounded and encased with textiles, from fashion textiles, to interior textiles to automotive and performance textiles; jobs include, design, buying, textile design assistant, studio assistant, product assistant, fashion adviser, design consultant, merchandiser, print maker and textile technologist.

Why Study With Us?

Testament from former students:

'This course has allowed us to develop individually whilst soaking up a huge breadth of creativity from other Art Textiles students. We have had the freedom to experiment and the support to develop our skills in applied surfaces and constructed pieces. We were given the opportunity to enter the Young Fashion Designer of the Year competition and were both finalists in successive years with our Y12 and A2 work and have visited the 'New Designers' exhibition in London which was both inspiring and informative for our next steps.'

Where Can Textiles Take You?

The majority of our Textiles students go on to study a degree in the creative sector. Many choose to spend a year studying for an Art Foundation at South Glos & Stroud College before specialising. However others have applied to their chosen courses in Y13 and have had great success in attaining places to study a wide range of subjects including:

Accessory Design | Contour Fashion | Costume and Performance Design | Fashion Design | Fashion Marketing | Interior Design | Surface Pattern Design | Tailoring | Textile Design

Universities Attended

Falmouth | London College of Fashion | Manchester Metropolitan | Nottingham Trent | Trinity and St David | University of the Arts Bournemouth | University of the Arts London

Entry Requirements

GCSE Grade 6 or above in Art & Design or Design Technology



From miniscule membrane structures to the intricate details of how we release energy from food, A Level Biology will demystify many of the structures and processes that make organisms 'tick'.

You will study a wide range of topics ranging from molecular Biology to ecosystems and microorganisms to mammals. Biology offers the opportunity to examine the background to areas such as GM foods, conservation of species, cloning, vaccines and 'factory farming'.

The skills acquired in the study of Biology will equip you for a variety of careers, not just in the Health and Clinical professions, but also a huge and diverse range of choice, such as Marine Biologist, Biotechnologist, Zoologist, Research Scientist in medicine or life sciences, Nature Conservation Officer and Scientific Writer/Reporter.

Why Study With Us?

We are a passionate and experienced team of teachers who want to share our love of Biology and are always on hand to help you. You will be supported by access to weekly drop in sessions, ad hoc teacher help and given the opportunity to be part of clubs and societies including BioTech, MedVetDent, Dissection and Microscope, as well as being given access to a range of recommended science texts in order to broaden your knowledge and support university applications.

Where Can Biology Take You?

Our A Level Biology students have gone on to study for degrees in:

Biochemistry | Biological Sciences | Biomedical Sciences | Master of Chiropractic | Forensic Science | Immunology | Medicinal and Biological Chemistry | Medicine | Medical Genetics | Medical Pharmacology | Medical Physiology | Marine Biology and Oceanography | Midwifery | Molecular Biology | Nutritional Sciences | Optometry | Nursing | Paramedic Practice | Pharmacology | Physiotherapy | Sport and Exercise Science | Veterinary Science | Wildlife Ecology and Conservation Science | Zoology

Universities Attended

Bath | Birmingham | Bristol | Cambridge | Cardiff | Coventry | Edinburgh | Exeter | Glasgow | Imperial College London | Leeds | Leicester | Loughborough | Manchester | Manchester Metropolitan | Nottingham | Plymouth | Queen Mary | Royal Veterinary College | Sheffield | Southampton | Swansea | University College London | University of South Wales | University of the West of England | York

Entry Requirements

GCSE Grade 7 or above in Biology or GCSE Grade 77 or above in Combined Science. If you achieve a Grade 6 in GCSE Biology, a Grade 7 or above in GCSE Chemistry or Mathematics would be considered as an alternative.

Business is an exciting and vibrant subject which is useful to all. Everyone will work at some stage throughout their lives whether it is paid, voluntary for themselves or as an employee. Therefore, organisations and how they are run will be of some interest to you. As we involve ourselves more in globalisation, and labour markets become more competitive, it is becoming more important for students to understand the working world.

Business is suitable for anyone looking to pursue higher education, full time employment or an apprenticeship. The assessment throughout the course does involve some essay writing. You will need to be able to make use of stimulus material, be able to present balanced analysis and crucially, be able to make a justified judgement. These skills are important for achieving the highest grades on this course. Finally, you will need to be comfortable with carrying out basic calculations.

Why Study With Us?

Business is all around us and happening every day and the approach at SHSF is current and up-to-date. Teaching is supported by current affairs and discussion. What is happening in the world of business is fundamental to lesson delivery and participation is very much encouraged. You will be stretched and challenged in terms of keeping abreast of current affairs and applying it to what happens in lessons.

You will be taught how to access the highest marks available through consistent past paper practice where appropriate and regular feedback. You will be surrounded by like-minded peers looking to achieve the very best outcomes from the course.

Where Can Business Take You?

Our A Level Business students have gone on to study for degrees in:

Business Studies | Business Management | Business and Psychology | Business Management and Marketing | Criminology | Geography | International Fashion Business | International Business Management | Law | Marketing, Advertising and Branding | Marketing and Management

Other students have gone into employment and obtained apprenticeships with companies such as St. James' Place Wealth Management and Gloucestershire NHS.

Universities Attended

Bournemouth | Cardiff | Coventry | Exeter | Gloucestershire | Nottingham Trent | Oxford Brookes | Sheffield | Westminster

Entry Requirements

GCSE Grade 5 or above in English Language and Mathematics

There are two kinds of chemist: the pragmatic chemist who wants to solve problems to make the world a better place, and the theoretical chemist who wants to deepen their understanding of the material world they live in. At SHSF we have written a bespoke curriculum to cater for both.

In our A Level Chemistry course, you will explore in depth the fundamental question of what drives chemical reactions and study different models of the atom and how they combine. The course highlights the real world significance of Chemistry.

In practical lessons you will develop the necessary skills to design and control chemical reactions in order to synthesise novel products. For example, you will transform oil of wintergreen into aspirin, carry out a quality control analysis of iron tablets and use extraction techniques to separate eugenol (a fat) from cloves before transforming it into soap.

Why Study With Us?

We are a very fortunate department in having excellent facilities and highly qualified teachers whose expertise covers organic, inorganic and physical Chemistry as well as biochemistry. We pride ourselves on the support we offer students and we promise a learning journey that is fascinating, challenging and above all, rewarding. We adore our subject and hope we can inspire you with a passion for Chemistry too!

Extracurricular Chemistry

Why not achieve the Gold Crest Award by joining the Chemistry department's Real Science Group. The group tackles authentic research and experimental work set by a local company. You will also have the opportunity to take part in the prestigious Chemistry Olympiad competition and become a member of the MedVetDent Society and Biochemistry group.

Where Can Chemistry Take You?

Our A Level Chemistry students have gone on to study for degrees in:

Chemistry | Biochemistry | Biological Sciences | Biomedical Sciences | Chemical Engineering | Forensic Science | Medicinal and Biological Chemistry | Medicine | Medical Genetics | Medical Pharmacology | Medical Physiology | Optometry | Pharmacology

Universities Attended

Bath | Birmingham | Brighton | Bristol | Cambridge | Cardiff | Chester | Edinburgh | Glasgow | Imperial College London | Keele | Leicester | Manchester | Newcastle | Nottingham | Oxford | Queen Mary | Reading | Royal Holloway | Sheffield | Southampton | University College London | University of the West of England | York | Warwick

Entry Requirements

GCSE Grade 7 or above in Chemistry or GCSE Grade 7.7 or above in Combined Science. If you achieve a Grade 6 in GCSE Chemistry, a Grade 7 or above in GCSE Mathematics would be considered as an alternative.

COMPUTER SCIENCE



You're living in the Digital Age! Computer programmes have all but infiltrated every aspect of our lives. Computer scientists theorise, design, develop, and apply the software and hardware for the programmes we use day in day out – sounds pretty important to us.

Programming therefore can be a life changing experience as it changes the way that you think about the world around you. It will make you a more accomplished problem solver and much more resilient in life.

This is why graduate recruiters in banks and management consultancies recruit heavily from university Computing departments, so it could lead onto an exciting career path that isn't necessarily Computer Science based. The possibilities are endless!!

Why Study With Us?

Student view: 'I love computer science for the skills it gives you. Regardless of where you want to go you can always use computing for it.'

We offer students the opportunity to take an EPQ in Cyber Security. This is offered in conjunction with Cyber Security Challenge UK and City & Guilds.

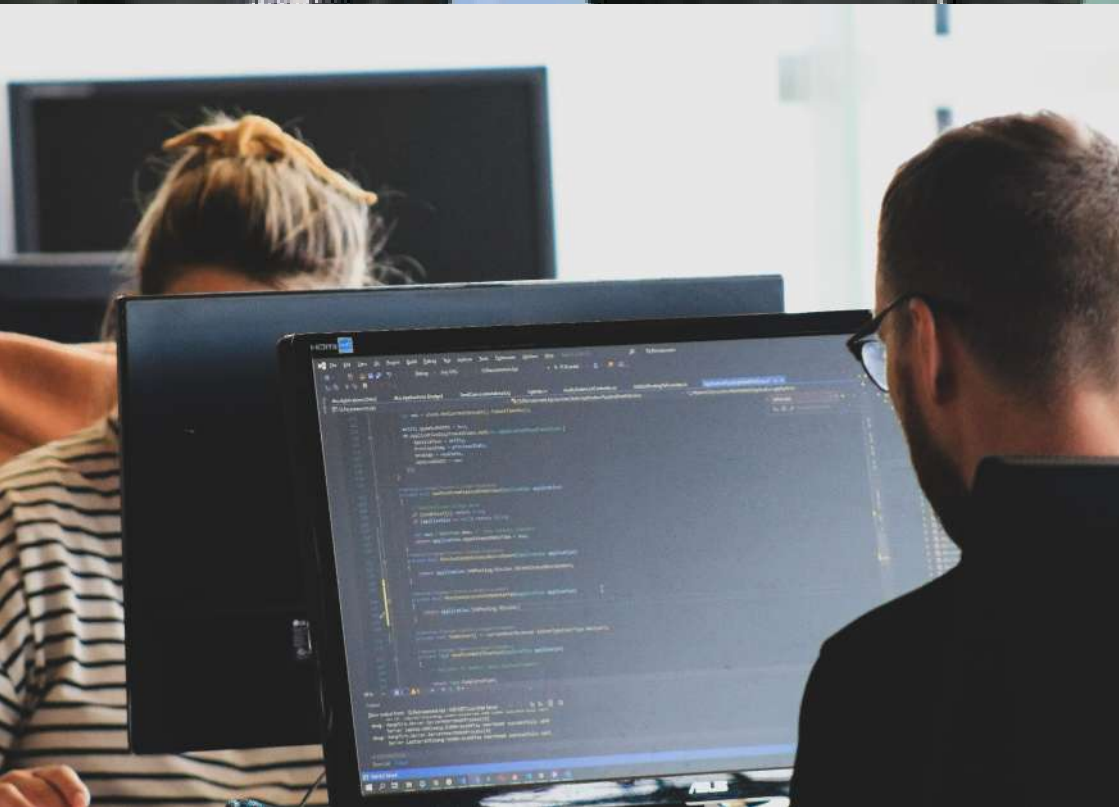
Where Can Computer Science Take You?

Some of our Computer Science students have gone directly to university whilst others have gained places with prestigious local employers:

- Higher Level Apprenticeship in Computing with local firm Renishaw
- Degree in Engineering sponsored by GE Aviation
- Degree in Computer Science at Cardiff University and Nottingham University
- Degree in Computer Science and Artificial Intelligence at York University
- Degree in Cyber & Computer Security at the University of Gloucestershire having completed an Extended Project Qualification in Cyber Security

Entry Requirements

GCSE Grade 5 or above in English Language and Mathematics





DRAMA & THEATRE

If you are looking to increase your practical and theoretical understanding of the theatre and performance then A Level Drama & Theatre is for you. It is suitable if you are interested in a career in the creative arts, wish to study an A Level which complements English Literature or indeed if you desire an interesting contrast between your options. Drama & Theatre will suit you if you enjoy a mix of individual skill development and group work. The course has a strong practical element but is sufficiently academic to meet higher education requirements. Did you know nearly 10,000 students studying at Russell Group Universities since 2012 have an A Level in Drama and Theatre? If you are hoping to get into drama school, Drama & Theatre is the most relevant A Level subject to take but studying Drama also helps develop key transferable skills useful in any industry, such as creative thinking, negotiation, leadership, and collaboration.

Why Study With Us?

The drama department is a standalone department dedicated to the teaching of drama that prides itself on building strong and lasting relationships with students and personalising the experience of the A Level course accordingly. The group-work and performance-based nature of the subject means you will develop a close bond with your class as you share experiences together. The course is taught by a subject specialist with many years experience of both teaching and examining drama, as well as personal acting experience.

Everything really is possible with drama as you can choose to be a performer or a designer (lighting, sound, set, costume) and have a choice of types of staging for your performances, as SHS has a proscenium arch theatre in the main school as well as a large black box drama studio with adjoining rehearsal room, both well-equipped with sound and lighting. You will attend numerous trips to see a variety of shows in theatres across the country as well as seeing touring companies visiting the school, but the contacts the department has with industry professionals often make the experiences extra special, for example, seeing a preview of an Edinburgh show in the classroom, and a personalised backstage tour of the National Theatre even getting to mix with the stars in the Green Room!

Where Can Drama Take You?

Our A Level Drama students have gone on to study:

Drama | Drama and English | Theatre Studies | Theatre and Performance | Musical Theatre | Drama: Performance, Politics and Society | Contemporary Circus with Physical Theatre | Television; as well as degrees in Criminology | English & German (Ox) | English Literature and Creative Writing | Law | Political Studies | Sociology

Universities and Performing Arts Schools Attended

Aberystwyth | Bath Spa | Cardiff | Derby | Drama Studio London | Exeter | Falmouth | Goldsmiths | Laine Theatre Arts | Manchester School of Theatre | Manchester | Oxford | Plymouth | Royal Holloway | Royal Welsh College of Music & Drama | University of the West of England | Trinity Laban | Winchester | York

Entry Requirements

GCSE Grade 6 or above in English Language and English Literature



DT - 3D PRODUCT DESIGN

Resistant Materials

Design and Technology courses provide an opportunity for you to develop your own creativity, capability and encourage entrepreneurial skills, to apply knowledge and understanding to a range of technological activities and to develop critical thinking. It allows you to 'think outside the box' and provides capability in a variety of life skills.

Students have used the course as a foundation for a variety of higher education courses or career paths. In recent years students have moved on to Art Foundation courses or degree courses in architecture, product design, a wide variety of engineering specialisms, business management and teaching. You will investigate historical, social, cultural, environmental and economic influences on design and technology, whilst enjoying opportunities to put your learning in to practice by producing prototypes of your choice. You will gain a real understanding of what it means to be a designer, alongside the knowledge and skills sought by higher education and employers.

Why Study With Us?

This creative and thought-provoking qualification gives you the practical skills, theoretical knowledge and confidence to succeed in a number of careers, especially those in the creative industries.

Student's view: This course has given me the skills I need to communicate my ideas both two and three dimensionally and the freedom to explore materials to realise my ideas. Understanding the theory behind the decision-making is also invaluable for the design process. I have thoroughly enjoyed seeing my ideas come to life and am proud of my coursework which has allowed me to build a portfolio for interview for my chosen course 'Furniture and Product Design' at NTU.'

Where Can Product Design Take You?

Our A Level Product Design students have gone on to study for degrees in:

Architecture | Architectural Engineering | Art Foundation | Design for Film and Television | Fashion Design | Furniture and Product Design | Interior Architecture and Design | Mechanical Engineering | Product Design Engineering | Social Science | Social Policy and Criminology

Universities Attended

Bath | Birmingham City | Falmouth | Loughborough | Nottingham Trent | Reading | Sheffield | South Glos & Stroud College

Entry Requirements

GCSE Grade 6 or above in Design Technology subject



Economics is all around us and relates to every aspect of our lives. It relates to the decisions we make as individuals, it explains why firms behave in the way they do, and why governments adopt and implement different policies. Economics helps to explain some of the challenges we face today as individuals and as part of a national and global economy. Economics also puts different economies under the spotlight whether they are developed, developing or emerging.

The study of Economics will help you to understand key challenges facing society such as inequality and inequity but also the possible solutions to move towards more robust developed systems. You will make use of economic theory and recent economic events in both macroeconomics, considering the broader economy as a whole, and microeconomics which focuses more on the behaviour of individuals and firms.

Why Study With Us?

As Economics is all around us and happening every day, the approach at SHSF is current and up-to-date. Teaching is supported by current affairs and discussion. What is happening in the local, national and global economy and political systems is fundamental to lesson delivery and participation is very much encouraged.

You will be stretched and challenged in terms of keeping abreast of current affairs and applying it to what happens in the classroom. You will be taught how to access the highest marks available through consistent essay practice where appropriate and regular feedback. You will be surrounded by like-minded peers looking to achieve the very best outcomes from the course.

Where Can Economics Take You?

Our A Level Economics students have gone on to study for degrees in:

Accounting and Finance | Economics | Economics and Econometrics | Economics and Politics | Economics and International Finance and Banking | Fashion Management | Geography | International Business Management | Pharmacology | Politics, Philosophy and Economics

Students have also gone directly into employment and obtained apprenticeships with companies such as PriceWaterhouseCoopers.

Universities Attended

Bath | Birmingham | Exeter | Keele | Leeds | Loughborough | Manchester | Nottingham | Nottingham Trent | Oxford Brookes | Reading | Sheffield

Entry Requirements

GCSE Grade 5 or above in English Language and Mathematics

This is a course that promises to take you on a journey: you will see, hear and feel some of the greatest works of literature written in the English language. You will travel to the late nineteenth century Congo, explore sumptuous India under the British Raj and then dive into the underbelly of Renaissance Venice.

You will explore issues, debate controversial themes and discuss contemporary poetic voices, experience experimental twentieth century American drama and delve into the power of Romantic imagination.

Having deepened your mastery of the subject, you will then be given the opportunity to navigate to the sunny uplands of an independent coursework project. By then you will have arrived at the prospect of being qualified to appreciate literature with a conceptual framework worthy of undergraduate study.

Why Study With Us?

We in the SHS English department are passionately committed to our students and we have an enviable reputation for exciting and innovative ways of exploring texts and supporting scholars to achieve and exceed their personal best; we have a long tradition of inspiring individuals to go beyond A Level and to study English further at leading universities. We readily support applicants in other closely-related disciplines including Law, Journalism and Media.

Student view: 'If someone asked why I do English Literature at SHS, I would definitely say that it's because of the teachers! All the SHS English teachers are so supportive and go the extra mile to help their students. Every lesson feels like something new and I have felt excited for each new topic that we have done.'

Where Can English Take You?

Our A Level English students have gone on to study for degrees in:

Architecture | Asian & Middle Eastern Studies | Criminology | Cultural and Media Studies | Drama | Economics and Politics | English Literature | English Language and Literature | English and Drama | English and Education | English and Film Studies | English & German | English and History | German | Human, Social and Political Sciences | Journalism | Law | Media and Communications | Philosophy, Politics and Economics | Psychology | Scottish Literature | Sociology

Universities Attended

Bath Spa | Birmingham | Bristol | Cambridge | Cardiff | Durham | Edinburgh | East Anglia | Exeter | Goldsmiths | King's College London | Leeds | Liverpool | Loughborough | Manchester | Nottingham | Oxford | Reading | Sheffield | Southampton | University College London | University of the West of England

Entry Requirements

GCSE Grade 6 or above in English Literature

*We never know how high we are
Till we are called to rise;
And then, if we are true to plan,
Our statures touch the sky*

Emily Dickenson



It is now commonplace for proficiency in languages to be sought among employers. More and more professions require you to work in a multilingual environment and there are few companies who do not have customers, if not branches, abroad. Just have a look at some higher education prospectuses and you will see how many of them combine science, ICT, engineering, management and business studies with languages.

Consider the advantages you will have if you have the ability to speak another language, coupled with a sound understanding of the politics and culture of the country or countries concerned.

Not just travel companies, but also business, finance, technology, media, creative and science-based professions are all increasingly looking for graduates who can offer a range of skills including language proficiency.

Why Study With Us?

We are specialist French teachers who have spent time abroad, working and teaching in France. We have lived and breathed the opportunities that studying French can afford you and we are excited to be a part of your journey as you go on to the adventures that await.

Stroud High has a long running exchange with Lycée St Joseph in Ancenis and as part of the Y12 course you will be offered the opportunity to take part in this exchange where you will undertake several days of work experience in France as well as enjoying a day trip to a French city.

Alongside lessons you will have weekly speaking sessions with the French Language Assistant who will help you to develop your confidence and skill levels in spoken French.

Where Can French Take You?

Our A Level French students have gone on to study for degrees in:

Asian and Middle Eastern Studies | English Law and French Law | French and English Literature | French and History | French and Italian | French and Japanese | French and French Law | French and Life Sciences | French and Mathematics | French and Spanish | International Development and Languages | International Relations and Arabic | Modern Languages and Economics | Political Science | Psychology and Linguistics

Universities Attended

Aberystwyth | Bath | Birmingham | Bristol | Cambridge | Cardiff | Durham | Exeter | King's College London | Leeds | Oxford | School of Oriental & Asian Studies | Sussex | University College London | York

Entry Requirements

GCSE Grade 7 or above in French

Geography helps to improve a number of valuable learning and life skills such as ICT, communication, numeracy and literacy skills. It teaches you how to handle and organise data and resources and is therefore seen as an excellent subject to study by universities and future employers. Geography is a unique and varied subject as it studies both the physical structure of the Earth as well as the social structure.

For this reason it can be taken at university either as a BSc or a BA. It is often available as a joint honours degree, combining with subjects such as development, economics, and environmental and sports sciences. It can lead to subject-linked careers such as town planning, surveying, hydrology, meteorology, environmental sciences and ordnance survey planning; or it can be used as a degree basis for further training in any subject. Geographers gain a huge range of transferable skills that are popular with universities and employers alike.

Why Study With Us?

Studying Geography at A Level allows you time to immerse yourself in the world and to learn how it works in both a physical and human sense. It is a subject that will match with any other, and allow you to discover your passions.

Geography can provide you with the basis of knowledge and skills to change the world! All of us in the department love our subject and hope that we will be able to develop a lifelong love of it with you too.

Where Can Geography Take You?

Our A Level Geography students have gone on to study for degrees in:

Anthropology | City and Regional Planning | Earth Sciences | Economics | Environmental Geography | Environmental Science | Geography | Geology | Geophysics | Geophysical Sciences | Marine Biology and Oceanography | Physical Geography | Rural Land Management | Zoology

Universities Attended

Aberystwyth | Birmingham | Bristol | Cambridge | Cardiff | Durham | Exeter | Keele | Leeds | Liverpool | Loughborough | Manchester | Newcastle | Nottingham | Plymouth | Royal Agricultural University | Sheffield | Swansea | University College London | University of the West of England

Entry Requirements

GCSE Grade 6 or above in Geography



It is now commonplace for proficiency in languages to be sought among employers. More and more professions require you to work in a multilingual environment and there are few companies who do not have customers, if not branches, abroad. Just have a look at some higher education prospectuses and you will see how many of them combine science, ICT, engineering, management and business studies with German.

Consider the advantages you will have if you have the ability to speak another language, coupled with a sound understanding of the politics and culture of the country or countries concerned. Not just travel companies, but also business, finance, technology, media, creative and science-based professions are all increasingly looking for graduates who can offer a range of skills including language proficiency.

German is the Smart Choice. Leaving aside the exciting opportunities to live and work in a German-speaking country, the CBI, the UK's premier business lobbying organisation, considers German as one of the most useful foreign language for organisations in the UK.

Why Study With Us?

We use authentic materials from German media including newspaper and website articles, as well as film and news video clips. Our German assistant will also help you to improve your confidence and ability in spoken German in order to prepare you for the oral exam.

There is also the opportunity to take part in our long-standing German Exchange to Wilhelm-Hausenstein-Gymnasium in Munich.

Where Can German Take You?

Most A Level German students combine their love of German with another subject at university and have gone on to study for degrees in:

Business Studies | English | English and German | English and Italian | German | German and Linguistics | German and Russian | Modern Foreign Languages | Neuroscience | Primary Education

Universities Attended

Birmingham | Bournemouth | Bristol | Cambridge | Cardiff | Exeter | Gloucestershire | King's College London | Oxford

Entry Requirements

GCSE Grade 7 or above in German



Do you have an enquiring, critical or analytical mind? If you've answered yes then History could be a great A Level for you to study! History is a fascinating subject in its own right – it is about people, so if you find other people interesting, you will find History fascinating. It also helps us make sense of the modern world we live in and has an important contribution to make to life-long learning.

History enables you to develop the ability to communicate clearly, synthesise and critically evaluate information – transferable skills which provide an excellent foundation for a number of careers and which are valued by employers.

Higher education institutions welcome historians onto History specific/History-related courses as well as degrees in Law, Journalism and Business.

Why Study With Us?

We have over 40 years of experience in delivering A Level History and all of our History teachers are degree qualified subject specialists. We are greatly experienced in not only the delivery of the OCR course but also in marking exam papers. We use new and innovative approaches to teaching the subject. We are developing a programme of links with university History departments. You will be encouraged to play an active role in the development of History, which might include running a History Society, planning trips and visits of your choice and inviting guest speakers. We are open to any other ideas that you have.

Where Can History Take You?

The types of degree courses, which need or accept History A Level include: Archaeology, Architecture and Anthropology, Classics, History, History of Art, Law, Philosophy, PPE and Politics. Our A Level History students have gone on to study for degrees in:

Ancient and Medieval History | Anthropology and Sociology | Archaeology | English | History and American Studies | History and English | History and French | History and Hispanic Studies | History and Politics | Law | Political Science | Social Anthropology | Sociology and Politics

Universities Attended

Birmingham | Bristol | Cambridge | Cardiff | Durham | Edinburgh | Exeter | Goldsmiths | King's College London | Leeds | Liverpool | Manchester | Nottingham | Oxford | Reading | Sheffield | Southampton | Swansea | York

Entry Requirements

GCSE Grade 6 or above in History and Grade 6 or above in English Language or English Literature



MATHEMATICS & FURTHER MATHS

You may wish to consider the continued study of Mathematics because you enjoy logical thinking, want to find out more about how Mathematics is used in the real world, derive satisfaction from problem solving or wish to delve deeper into the mathematical ideas introduced at GCSE level. Mathematics complements a vast number of other subjects as well as being an important qualification in its own right and is an essential qualification for some career and higher education opportunities.

A good grade can lead to a wide range of mathematical subjects at higher education and supports scientific and technical subjects which always have a mathematical component. Beyond this, the studying of Mathematics will offer you excellent career choices. The reason why so many employers highly value mathematics qualifications is because you will become better at thinking logically and analytically. Through solving problems you will develop resilience and be able to think creatively and strategically.

Why Study With Us?

Each year we enter students in the Senior Maths Challenge, Senior Team Challenge and Maths Olympiad, all of which provide opportunities for demonstrating problem solving skills beyond the curriculum. We continuously look for enrichment events that demonstrate the future potential of our subject. In the past, these have included trips to Maths in Action, an inspirational day of Mathematics that take you to the cutting edge of fields from statistics, engineering and cyber security to Pure Mathematics.

Further Mathematics

Strong mathematicians can finish with an A Level in Further Mathematics. This additional qualification will allow you to gain greater breadth and depth of knowledge and understanding of the subject.

Where Can Mathematics Take You?

Our A Level Mathematicians have gone on to study for degrees in:

Accounting and Finance | Aerospace Engineering | Architecture | Astrophysics | Biomedical Sciences | Business & Management | Chemistry | Civil and Structural Engineering | French and Mathematics | Geography | Geology | Mathematics | Mathematics, Economics and Statistics | Mathematical Physics | Mechanical Engineering | Medicine | Music | Philosophy, Politics and Economics | Physics, Astrophysics and Cosmology | Theoretical Physics | Veterinary Science

Our students have also undertaken Engineering Degrees at the Dyson Institute and apprenticeships with companies such as GE Aviation, St. James' Place Wealth Management and PriceWaterhouseCoopers.

Universities Attended

Bath | Birmingham | Brighton | Bristol | Cambridge | Cardiff | Durham | Exeter | Imperial | Lancaster | Leeds | Loughborough | King's College London | Manchester | Nottingham | Oxford | Plymouth | Portsmouth | Reading | Sheffield | Warwick

Entry Requirements

GCSE Grade 7 or above in Mathematics. GCSE Grade 8 or above for Further Mathematics.



Are you passionate about music? Are you eager to find out how you can improve your performing skills? Are you interested in how the musical elements are used to create compositions? If your answer is yes, then Music is the subject for you. Music opens up the world of performance and composition opportunities both at school and in county groups. You will be given the opportunity to perform in a diverse range of ensembles and to take part in all the concerts, musicals and trips on offer in this vibrant department.

A Level Music is for you if you want to develop your performance and composition skills and understanding of music, study music or a combined arts subject in higher education and pursue a vocation in music and/or the arts, or broaden your experience and deepen your understanding of both live and recorded music as part of lifelong learning.

Why Study With Us?

We are a passionate, experienced team of teachers. We have over 30 years of experience in delivering A Level Music and our staff are conservatoire trained.

We will actively support you if you wish to participate in public performance events including the Cheltenham Music Festival and Music for Youth plus Rotary Young Musician of the Year. You will be given the opportunity to visit numerous concert venues throughout the year, including the Royal Albert Hall. Our department has a wealth of reading materials and subject specific books and has a large team of professional instrumental and vocal specialists accessible for advice and lessons.

We also offer a diverse range of senior ensemble opportunities, both instrumental and vocal including A Capella Choir, Flute Ensemble, Recorder Ensemble, Senior Orchestra, Senior Strings, Senior Choir, Senior Clarinets and Wind Ensemble.

Where Can Music Take You?

Our A Level Musicians have gone on to study for a variety of degrees including:

Music | Music and Spanish | Professional Musicianship | Music (Song Writing and Performance) | English and Music | Drama | English | History and Politics | Law | Nursing | Mathematical Physics | Politics | Psychology | Psychology and Speech Pathology

Universities and Conservatoires Attended

Brighton Institute of Modern Music | Bristol | Cardiff | Edinburgh | Exeter | King's College London | Liverpool | Liverpool Institute for Performing Arts | Manchester | Nottingham | Oxford | Plymouth | Reading | Royal Birmingham Conservatoire | Sheffield | Southampton

Entry Requirements

GCSE Music at Grade 6 or above. You should be able to read music notation fluently (both treble and bass clefs) and have an understanding of basic harmony. You should have achieved Grade 5 ABRSM in instrument or voice.



PHILOSOPHY, ETHICS & BELIEF

Philosophy, Ethics & Belief encourages you to engage, learn, critique, read, explore, debate, discuss and love the process of philosophical and ethical enquiry.

Students have taken this subject for many reasons over the years but these are some of the key themes that repeat across each cohort: *challenge; interest; free thinking; PPE; independence of thought; grey areas; solutions; critique; logic; reasoning; scholarship; depth breadth; belief; faith; systems of practice; argument; debate.*

Take a look at some of the topic areas we study and think for a moment about the many possible lines of discussion and enquiry; you will join the great philosophers - journey with them, debate with them... Socrates, Kant, Hume, Siddhartha Gautama, Nietzsche, Arendt, De Beauvoir, Dawkins, Krauss to mention but a few.

We deal with the unknown in Philosophy, Ethics & Belief and your contributions could hold their own against the greats.

Why Study With Us?

Each year we take part in the Cheltenham Ladies College Philosophy Conference with past speakers including Peter Singer, Anthony Flew, Julian Baggini and Baroness Warnock.

We also welcome visitors to support us in our learning within study time. We have a significant programme of support in terms of time, resources and teacher expertise.

Where Can Philosophy, Ethics & Belief Take You?

Our A Level Philosophy, Ethics & Belief students have gone on to study for degrees in:

Anthropology | Criminology | Cultural and Media Studies | English | History | Law | Nutritional Sciences | Nursing | Politics and Spanish | Psychology | Sociology | Sociology and Anthropology | Sociology and Politics | Theology

Universities Attended

Birmingham | Bournemouth | Bristol | Cardiff | Durham | Edinburgh | Exeter | Goldsmiths | Hull | Lancaster | Leeds | Manchester | Manchester Metropolitan | Nottingham | York

Entry Requirements

GCSE Grade 6 or above in RE or a similar subject, such as History. You do not need to have taken RE as a GCSE.



PHYSICAL EDUCATION

Are you passionate about sport? Are you driven to find out how you can improve your performance? Are you interested in how our bodies push themselves to their physical peak? Are you keen to understand what gives Olympic champions the psychological edge over their competitors? Are you intrigued by why sport is a national obsession, dominating the media and impacting the health of our nation? If the answer is yes, then Physical Education is the subject for you.

Physical Education opens up the world of sport. With the chance to perform or coach a sport, you will receive a well-rounded and full introduction to the world of Physical Education, sport and sports science from which to build on to move into higher education, employment or further training. Physical Education develops skills for a modern world. You will develop a range of practical skills such as dealing with pressure, decision making, analysing and evaluating live performance.

Why Study With Us?

The course at SHSF is extremely diverse, it allows you to explore and enhance your own sporting ability, but also bridges the academic divide between the arts and sciences. Topics covered in the theoretical part of the course include: applied anatomy and physiology; skill acquisition; sport and society; exercise physiology; biomechanical movement; sport psychology; the role of technology in physical activity and sport.

Where Can Physical Education Take You?

There are a wealth of courses to study after A Levels including Biomechanics, Sport Education, Sports Coaching, Sports Journalism, Biology, Criminology, Human Biosciences, Master of Chiropractic, Nutrition and Dietetics, Physiotherapy, Sport Psychology, Special Educational Needs, Sport and Exercise Science, Sport Therapy, Sport Rehabilitation, Sport Management, Sport Marketing, Sport Development, Sport Engineering, Sport Business, Sport Technology and Psychology.

Our A Level Physical Education students have gone on to study for degrees in:

Biology | Biochemistry | Business Administration | Criminology | Events Management | Human Biosciences | Master of Chiropractic | Medicine | Nursing | Nutrition and Dietetics | Paramedic Science | Physiotherapy | Psychology | Special Educational Needs | Sport and Exercise Science

Universities Attended

Birmingham | California State University (USA) | Cardiff | De Montfort | Drake University (USA) | Liverpool Hope | Loughborough | Manchester | Newcastle | Nottingham | Nottingham Trent | Plymouth | Sheffield | Sheffield Hallam | Southampton Solent | Surrey | University of South Wales | University of East Anglia | University of the West of England | Winchester

Entry Requirements

GCSE Grade 5 or above in English Language and Mathematics. Recommended to have achieved a Grade 6 or above in GCSE Physical Education and Grade 5 or above in GCSE Science.



PHYSICS

Physics is the most fundamental of the sciences, with its ultimate goal being to understand any and all aspects of our universe, from the apparently simple (e.g. the motion of a dropped object) to the highly complex (e.g. the search for the Higgs Boson at CERN).

If you want to know just how and why the natural world works as it does then this is the course for you. It covers a wide range of topics from the tiniest scale of sub-atomic particles to the evolution of the cosmos and aims to develop your interest and enthusiasm for the subject along with the full skill-set needed to be successful within it.

Physics is at the heart of engineering with applications ranging from spacecraft design, motor sport, renewable energy infrastructures and civil engineering to the nuclear and gas and oil power industries. There are many branches of research from the search for clean energy from nuclear fusion to the search for answers on dark matter to medical physics.

Why Study With Us?

You'll find a very dedicated set of Physics teachers who are enthusiastic about their subject and want to help you develop so that you can achieve the grade you want. We provide extra-curricular activities that are very special because of our links with professionals in the fields of Physics and engineering.

These activities range from engineering projects to Physics projects about galaxies. All the projects are entered for the nationally recognised BA Gold Crest award so this will be extremely valuable when applying for courses or apprenticeships.

Where Can Physics Take You?

Our A Level Physicists have gone on to study for degrees in:

Aerospace Engineering | Astrophysics | Chemical Engineering | Engineering | Geophysics | Mathematical Physics | Mathematics | Medical Physics | Mechanical Engineering | Physics with Astrophysics and Cosmology | Physics with Philosophy | Product Design Engineering | Renewable Energy Engineering | Theoretical Physics

Universities Attended

Birmingham | Bristol | Cambridge | Cardiff | Exeter | Imperial College London | Leeds | Loughborough | Manchester | Nottingham | Portsmouth | Sheffield | Swansea | University College London | Warwick

Students have also gone on to complete degrees at the Dyson Institute and apprenticeships with GE Aviation.

Entry Requirements

GCSE Grade 7 or above in Physics or GCSE Grade 77 or above in Combined Science.
Alternatively GCSE Grade 6 in Physics and GCSE Grade 7 or above in Mathematics.



POLITICS & GOVERNMENT

While Politics is undoubtedly the best way for a young person to get to grips with major domestic and global events, it is also well respected by top universities and requires both historical depth and for students to study in real time and be up to the minute. Over the coming years the way in which the UK is governed will change significantly and studying Politics will give you a unique opportunity to understand the implications of recent events.

Studying Politics is particularly useful for those going on to study any of the humanities or social sciences, and the analytical and communication skills acquired are transferable to careers in journalism, publishing, law, the civil service, pressure groups, political consultancy, education or business.

Previous students have gone on to write for the Economist, edit the Huffington Post, they are barristers, financial consultants in the City of London, advisors, one former student became a Member of the European Parliament, and others are lobbyists and research assistants to leading politicians.

Why Study With Us?

The SHSF Politics department offers a number of enrichment opportunities. In 2021, we have had virtual visits from Baroness Verma and Councillor Nigel Prenter and sessions with the European Parliament Education Service. We are the only school in Gloucestershire to participate in the Euroscola programme in which students visit the European Parliament in Strasbourg and debate with students from EU member states. The SHSF Politics department has a vast network of alumni who have given talks on working in Parliament, how to get into journalism as well as encouraging political activism among students. You will visit the Houses of Parliament and the Supreme Court. Stroud High Politics department also supports the debating teams; we coach a European Youth Parliament team every year, in 2021 students progressed to the national finals and Stroud High won the national competition in 2018.

Where Can Politics Take You?

Our A Level Politics students have gone on to study for degrees in:

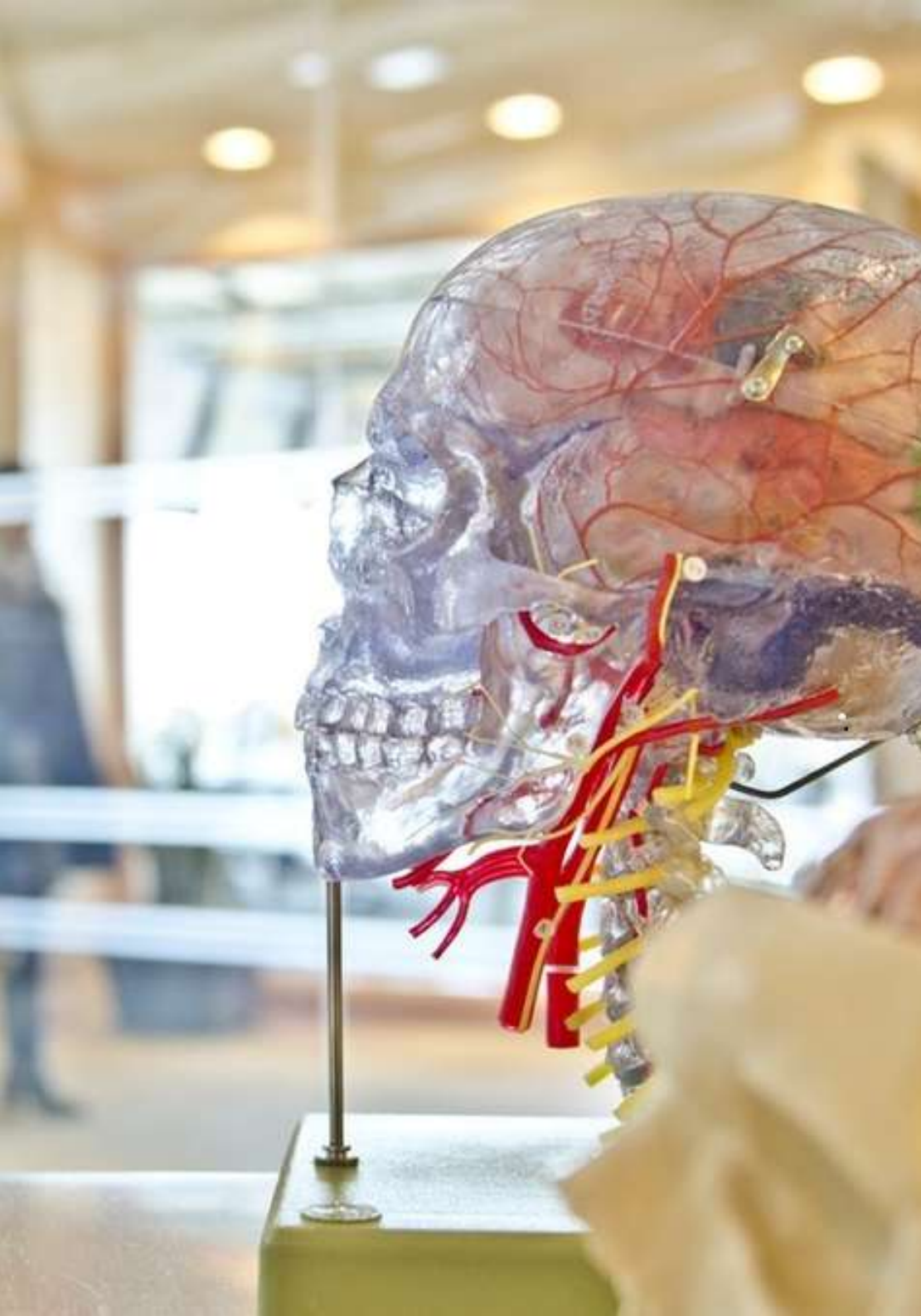
Criminology | Culture, Literature and Politics | Economics and Politics | English | European Social and Political Studies | History | History and Politics | History and Spanish | Human, Social and Political Sciences | Law | Mathematical Economics and Statistics | Philosophy, Politics and Economics | Political Science | Politics and Criminology | Politics and International Relations | Politics and Sociology | Politics and Spanish | Sociology

Universities Attended

Birmingham | Bristol | Cambridge | Cardiff | East Anglia | Edinburgh | Exeter | Goldsmiths | Leeds | Liverpool | London School of Economics | Manchester | Nottingham | Oxford | Reading | Sheffield | Southampton | Sussex | Swansea | University College London | York

Entry Requirements

GCSE Grade 5 or above in English Language and Mathematics



Psychology is the scientific study of the mind and how it influences our behaviour. Amongst other things, psychologists aim to understand what motivates individuals, how and why our personalities develop differently and why we behave the way we do in social situations. Psychology bridges many disciplines, including philosophy, medicine, biology and sociology and therefore provides an excellent opportunity for you to make links between your chosen subjects. You will develop many transferable skills, such as the ability to structure an argument and discuss a topic clearly and objectively, whilst also learning critical thinking skills, evaluating sources and the credibility of published research.

A Level Psychology is an excellent foundation for any career working with people. You will gain an understanding of various personality types and how experiences can shape a person and affect the way they behave in certain situations, helping to understand human dynamics in any workplace.

Why Study With Us?

Alongside high quality teaching of the AQA curriculum, we offer lunchtime seminars with local, practising psychologists. These can often be tailored to the interests of students. Examples include a clinical psychologist working with refugees, as well as those working in addiction services and in neurofeedback. You will have the opportunity to attend a conference; further broadening your knowledge of the opportunities available to you. Recent speakers have included Dr Gianna Cassidy on how music can help dementia sufferers, Oliver Meech on the Psychology of Magic and Andrew Newton, a world renowned Hypnotherapist.

In Y13, you are invited to present an area of your choice to Y10 and Y11 students at the fortnightly 'PsychSoc' allowing you not only to further your own understanding of this area, but also to lead a seminar-style discussion.

Where Can Psychology Take You?

Our A Level Psychology students have gone on to study for degrees in:

Anthropology | Applied Medical Sciences | Applied Psychology (Clinical) | Business Management and Psychology | Criminology and Social Policy | Marketing | Master of Chiropractic | Medicine | Nursing | Politics and Criminology | Psychology | Psychology and Global Sustainable Development | Psychology and Cognitive Neuroscience | Psychology and Linguistics | Psychology and Marketing | Special Education Needs | Social Sciences | Speech and Language Therapy

Universities Attended

Birmingham | Brighton | Bristol | Cardiff | Edinburgh | Exeter | Lancaster | Leeds | Leicester | Liverpool | Manchester | Newcastle | Nottingham | Oxford | Oxford Brookes | Plymouth | Sheffield | Swansea | University of South Wales | University of the West of England | Warwick

Entry Requirements

GCSE Grade 5 or above in English Language and Mathematics



SOCIOLOGY

Sociology is the study of society, people and their behaviour. You will be encouraged to look beyond the obvious and to examine the patterns and relationships that shape both our society and the individuals within it. Sociology is a rigorous academic subject that complements a range of other subjects through its development of analytical and evaluative skills. Critical thinking skills learnt in Sociology provide excellent preparation for university and for career paths such as law, the police, criminology and journalism.

Developing an awareness of different groups of people in society and their needs is also invaluable for professions in education, marketing, medicine and social work.

Why Study With Us?

The Sociology department helps facilitate Access to Bristol sessions if you wish to participate in the university's access courses on Sociology, Social Policy or Education. The department invites speakers from Beresford Women's Refuge and Eastwood Park Women's Prison to come and talk to you. We run an annual trip to either a Criminology Conference or Sociology in Action Conference with high calibre speakers.

The department has a wealth of reading materials such as 'Gang Leader for a Day' and 'Everyday Sexism' to help you deepen your understanding of topics such as Crime and Deviance and Feminism. Our Sociology students have successfully applied for work experience with organisations such as Stroud Foodbank, GDASS (Gloucestershire Domestic Abuse Support Services), local primary schools and the 'Ride Along' scheme with Gloucestershire Police.

Where Can Sociology Take You?

Our A Level Sociologists have gone on to student for degrees in:

Archaeology | Anthropology | Biomedical Sciences | Business Management | Criminology | Criminology and Sociology | English | Geography | German and Russian | History | Law with Criminology | Midwifery | Nursing | Philosophy and Politics | Politics and International Relations | Psychology | Sociology | Sociology and Anthropology | Social Science | Social Policy and Criminology | Sociology and Politics

Universities Attended

Birmingham | Bournemouth | Brighton | Bristol | Cambridge | Cardiff | Edinburgh | Exeter | Leeds | Liverpool | London School of Economics | Manchester | Nottingham Trent | Plymouth | Sheffield | Southampton | Stirling | University of the West of England | York

Entry Requirements

GCSE Grade 5 or above in English Language and Mathematics



It is now commonplace for proficiency in Spanish to be sought among employers. More and more professions require you to work in a multilingual environment and there are few companies who do not have customers, if not branches, abroad. Just have a look at some higher education prospectuses and you will see how many of them combine science, ICT, engineering, management and business studies with Spanish.

Consider the advantages you will have if you have the ability to speak another language, coupled with a sound understanding of the politics and culture of the country or countries concerned. Not only travel companies, but also business, finance, technology, media, creative and science-based professions, are all increasingly looking for graduates who can offer a range of skills including language proficiency.

During the course you will develop your ability to write fluently and accurately in Spanish for a range of different purposes, and increase your understanding of grammar and how the language fits together. You will also have the opportunity to acquire important personal research and study skills, through topic and project work.

Why Study With Us?

You will be taught by a passionate and experienced team of specialist Spanish teachers. We have a successful work experience programme and links with schools in Albacete. As part of the Y12 course you will be offered the opportunity to take part in a homestay where you will undertake several days of work experience in Spain, as well as stay with a host family linked to one of our partner schools.

Where Can Spanish Take You?

Most A Level Spanish students combine their love of Spanish with another subject at university and have gone on to study for degrees in:

Arabic and Russian | English and Modern Languages | French and Spanish | History and Hispanic Studies | Hispanic Studies and Russian | Journalism | Law and Spanish | Music and Spanish | Philosophy and Spanish | Spanish and History | Spanish and Italian | Spanish and Spanish Law

Universities Attended

Bath | Bristol | Birmingham | Durham | Exeter | Glasgow | King's College London | Leeds | Liverpool | Nottingham | Oxford

Entry Requirements

GCSE Grade 7 or above in Spanish

ADDITIONAL QUALIFICATIONS

Extended Project Qualification

The majority of our students complete the Extended Project Qualification (EPQ) alongside their three A Level subjects. The EPQ is a Level 3 programme of study awarded by AQA and is worth up to half an A Level (28 UCAS points for a Grade A). The qualification entails completing a research project based on a topic of your choice that can be related to your current studies or a topic of interest. If you intend to go to university, it is a good idea to choose a topic related to future studies.

The EPQ gives you an opportunity to expand your learning in an area that really interests you. If you are unable to study a subject at A Level that you hope to pursue a career in (archaeology or architecture for example) then an EPQ is an excellent way to show your commitment to your future study or career. The project can be in the form of a dissertation, artefact, musical composition, dramatic project, short film, website design or blueprint.

The EPQ is valued by both universities and employers as it demonstrates dedication to independent learning and helps you develop a range of extra study skills in preparation for university or work. Some universities reduce their standard offer for students who gain a high EPQ grade (usually Grade A). In the past our students have received reduced offers from Bath, Birmingham, Cardiff, Exeter, Leeds, Leicester, Liverpool, Manchester, Reading, Sheffield, Southampton and East Anglia in lieu of their EPQ projects.

Further Mathematics A Level

If Mathematics is your passion then A Level Further Mathematics is a natural choice as your Additional Qualification. Further Mathematics allows you to gain greater breadth and depth of knowledge and understanding of the subject. For instance, the study of imaginary numbers will open up a whole new world of numbers which have very important applications in engineering, physics and mathematics. In addition, the ideas introduced in the Mathematics qualification are taken to a much more complex level.

Combined with A Level Mathematics, this 'double' qualification is an extremely powerful one for those strong enough mathematically to study it. Although it is rarely a stated requirement for entry to courses in higher education, it is highly recommended that students have studied Further Mathematics if they intend to study Mathematics, Engineering or certain scientific courses at some universities. Indeed, some students may find themselves at a disadvantage if they apply for such courses without having studied Further Mathematics at A Level. Students are advised to speak to a member of the Mathematics department or do some university course research to determine if this is the case.

In order to do A Level Further Mathematics, you will need to have achieved a Grade 8 in GCSE Mathematics.

ADDITIONAL QUALIFICATIONS

Core Maths

Core Maths is equivalent in size to an AS qualification and is worth up to 20 UCAS points. The course will help you develop the mathematical skills gained at GCSE Level and focuses on using and applying Mathematics to solve problems drawn from other subjects, work and real life. Core Maths helps with the Mathematics needed for a broad range of other subjects such as Biology, Business, Geography and Psychology and will help you keep your Mathematics up to date in preparation for university or employment.

The course includes new content such as Statistics, Financial Maths and using Algebra and you will also analyse data to make decisions, use spreadsheets and percentages in real-life contexts. The skills developed in the study of Mathematics are increasingly important for the workplace and higher education; studying Core Maths will help you keep these essential skills.

Gold Crest Award

For the Gold Crest Award you will complete a project that makes an original contribution to a STEM field of study and submit your findings via an online platform. You will spend approximately 70 hours working on your project.

The Award will help you to hone your investigative skills and employ the scientific method to conduct your own piece of research. CREST Gold can be used to enhance your UCAS personal statements and is recognised and respected by universities and employers. In addition, the Gold Award can count towards the skills section of any Duke of Edinburgh Award.

Gold Arts Award

If you love the creative arts then you may wish to consider completing the Gold Arts Award. It will inspire you to grow your art and leadership talents. It's creative, valuable and accessible and is a nationally recognised Level 3 qualification worth 16 UCAS points.

The Arts Award recognises all art forms ranging from fashion to poetry, rapping to dance, sculpture to film and arts administration to backstage roles, providing assessment opportunities for many different learners and offering freedom of choice within the framework. This enables you to play to your strengths and express your creative identity through art form options and portfolio presentation. The Arts Award is designed as a flexible, personalised, learning programme in which you have choice and control.

SHS - Sports, Coaching and Leadership

We offer the SHS Sport, Coaching and Leadership course for Sixth Form students.

What does the course involve?

Sport leaders courses in cricket and handball; football refereeing course; hockey officiating course; and netball umpiring course. You will also be able to volunteer in SHS PE lessons as well as local primary schools and will learn how to coach and teach various activities including archery.

You will also have an opportunity to take part in an outdoor adventure weekend at St George's House in Devon, visits to climbing and bouldering centres and a visit to The Wave in Bristol (note fees are payable for these opportunities).

MATHS FOR OTHER SUBJECTS

We run Maths for Other Subjects sessions to help support students taking A Level subjects with a significant maths content. The sessions provide comprehensive reference notes and subject specific questions relevant to your A Level subjects.

The sessions are for students who are not taking A Level Mathematics but if you do study Mathematics and/or Further Maths, you are welcome to attend.

Topic	A Level Biology (10% Maths)	A Level Chemistry (20% Maths)	A Level Geography (20% Maths)	A Level Physics (40% Maths)	A Level Psychology (10% Maths)
Number work (Fractions/Decimals/Percentages/Ratios)	✓	✓	✓	✓	✓
Standard Form	✓	✓	✓	✓	✓
Formulae (using and arranging)	✓	✓	✓	✓	✓
Solving Equations	✓	✓	✓	✓	✓
Calculating Averages	✓	✓	✓		✓
Uncertainty and Errors	✓	✓		✓	
Linear Graphs	✓	✓		✓	
Standard Deviation	✓		✓		✓
Logarithms		✓		✓	
Natural Logs and Exponentials		✓		✓	
Non-Linear Graphs		✓		✓	
Rates of Change and Areas Under Graphs		✓		✓	
Chi-Squared Test		✓			✓
Vectors				✓	
Pythagoras and Trigonometry				✓	
Histograms					✓





Mechanic. Graphic designer. Engineer. Nobel Prize Winner.
Astrophysicist. **Confident**. Game changer. Musician. Tailor. Artist.
Dancer. **Brave**. Marine biologist. Surgeon. Surveyor. Dietician.
Politician. Accountant. **Curious**. Banker. Chef. Dentist. Midwife.
Architect. Actor. Pilot. Fire-fighter. **Courteous**. Police officer.
Judge. Secretary General of the United Nations. Librarian. Lawyer.
Astronaut. Social worker. Psychiatrist. Film producer. Statistician.
Scientist. Novelist. **Honourable**. Teacher. Independent. Paramedic.
Technologist. Vet. Prime Minister. Nurse. Broker. **Respectful**.
Racing driver. Revolutionary. Pharmacist. **Fun**. Doctor. Pie maker.
Carer. Pioneer. Comedian. Olympic athlete.
Happy.

EVERYTHING IS POSSIBLE.



@STROUDHIGHSIXTHFORM
STROUDHIGHSIXTHFORM.CO.UK