

SHIPPEO

FROM TRANSPARENCY TO ACTION - HOW REAL-TIME VISIBILITY EMPOWERS SUPPLY CHAIN ORGANIZATIONS



Niklas Bergner

Head of Strategy and Solution
Management, 4flow



Thomas Spieker

Director Central Europe,
Shippeo



AGENDA

- How real-time tracking puts you into your supply chain's driver's seat
- How to transform real-time tracking insights into concrete actions
- How to maximize supply chain value with end-to-end visibility

Challenges



- Large and complex network structures
- Service providers with limited visibility
- High number of stakeholders and long communication chains
- Capacity shortages

Customer Requirements



- Support in global end-to-end supply chain visibility
- Increasing demand to offer B2C functionalities in B2B networks
- Cost reduction and cost avoidance

Expectations on real-time

transparency



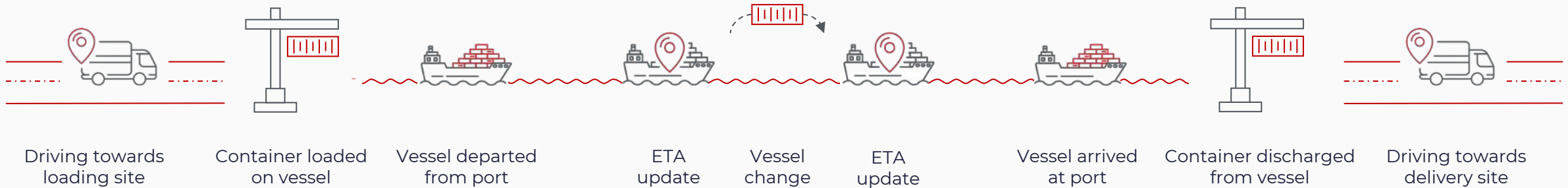
- Increase network stability
- Shorten reaction time to take the right actions
- Support cross-functional cost potentials

S THE SHIPPEO REAL-TIME VISIBILITY PLATFORM

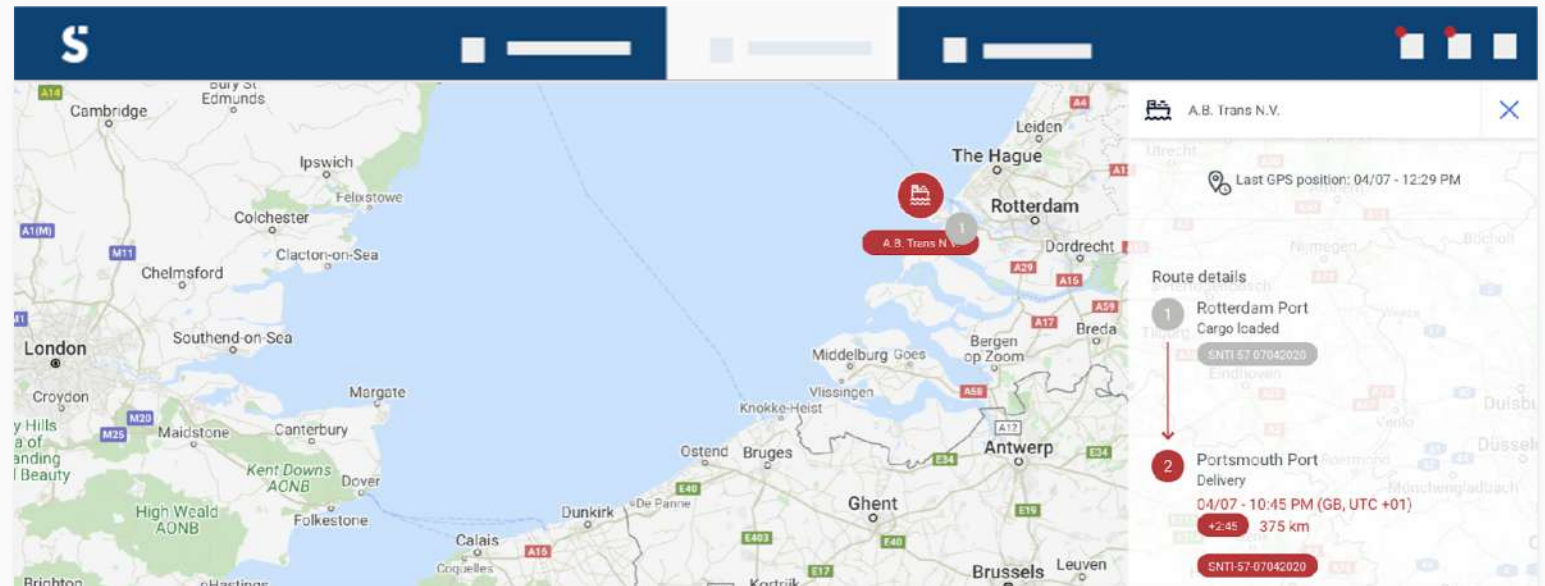
SHIPPER VISIBILITY – OCEAN FREIGHT

Anticipate

ANTICIPATE DELAYS AND EXCEPTIONAL EVENTS ON YOUR CONTAINERS THANKS TO REAL TIME MONITORING OF YOUR OCEAN SHIPMENTS



- Anticipate delays with accurate ETA
- React to a change of vessel
- Accelerate communication between all stakeholders
- Avoid and reduce detention costs





FROM DATA TO INSIGHTS TO ACTIONS



Delivery performance

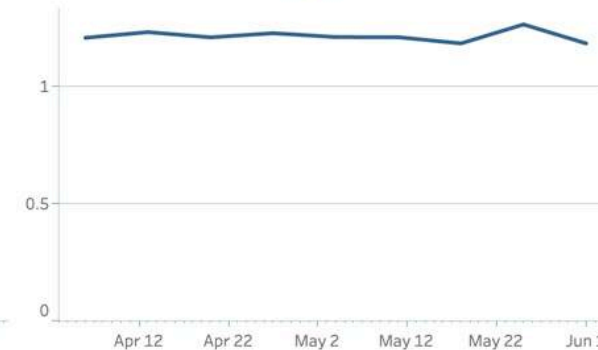
Delivery punctuality
On time or acceptable delay

90%



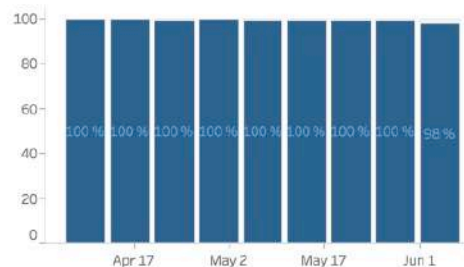
Average delay at the delivery site
Late TOs only

1:12

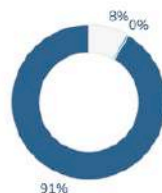


Compliance: overall

Compliant pairings



Tracking type



Compliance detailed by delivery site : overall

Dresden KMT	169	83%	0%	100%	93%	93%
Salzwedel DPKT	168	91%	0%	100%	93%	93%

Delay observed at loading site ⓘ

Date: Monday, April 6, 2020 2:05 PM (NL, UTC +02) ⓘ
Time NL (UTC +02)
Entered by Shippeo ⚙

Driving towards loading site ⓘ

Date: Monday, April 6, 2020 2:30 PM (NL, UTC +02) ⓘ
Time NL (UTC +02)
Entered by Shippeo ⚙

Likely delay at delivery site ⓘ





THE TRANSFORMATION OF TRANSPARENCY INFORMATION INTO ACTIONABLE MEASURES REQUIRES A SUPPLY CHAIN ORGANIZATION

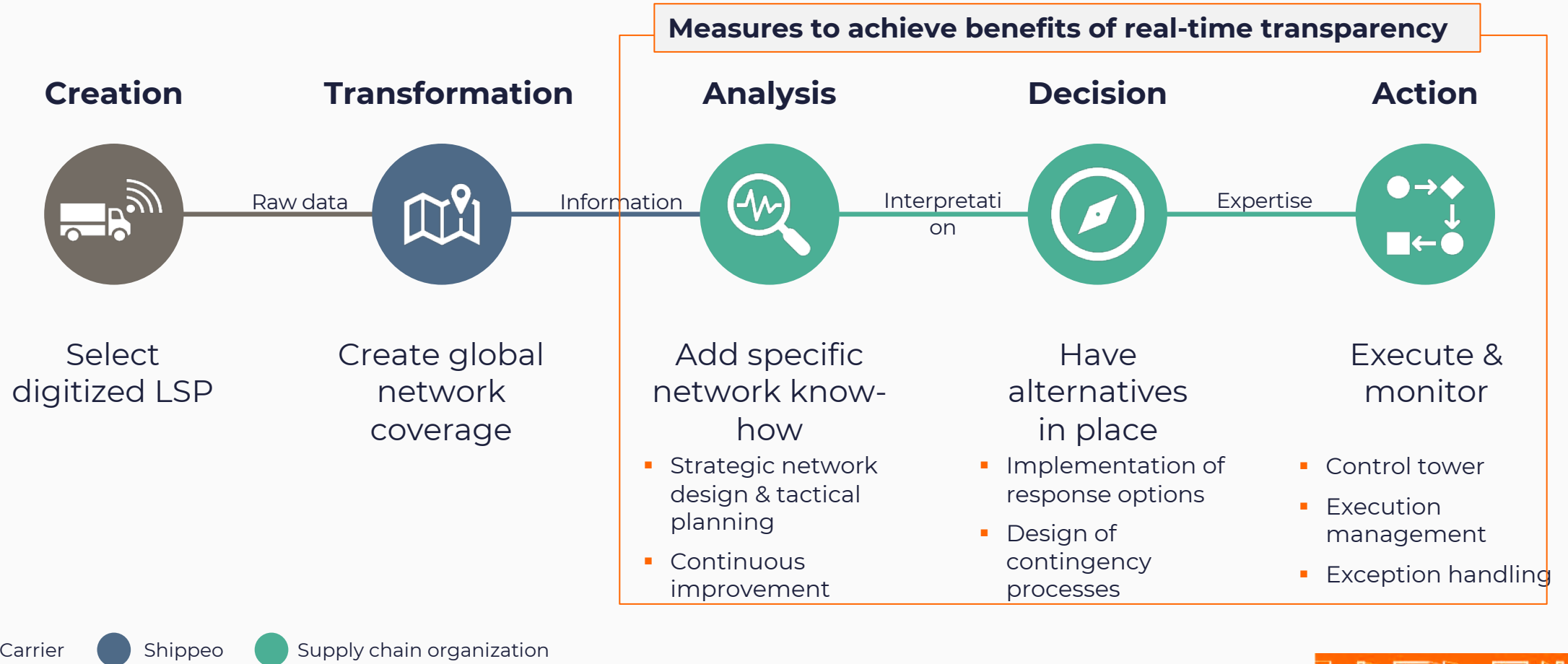


● Carrier ● Shipper ● Supply chain organization



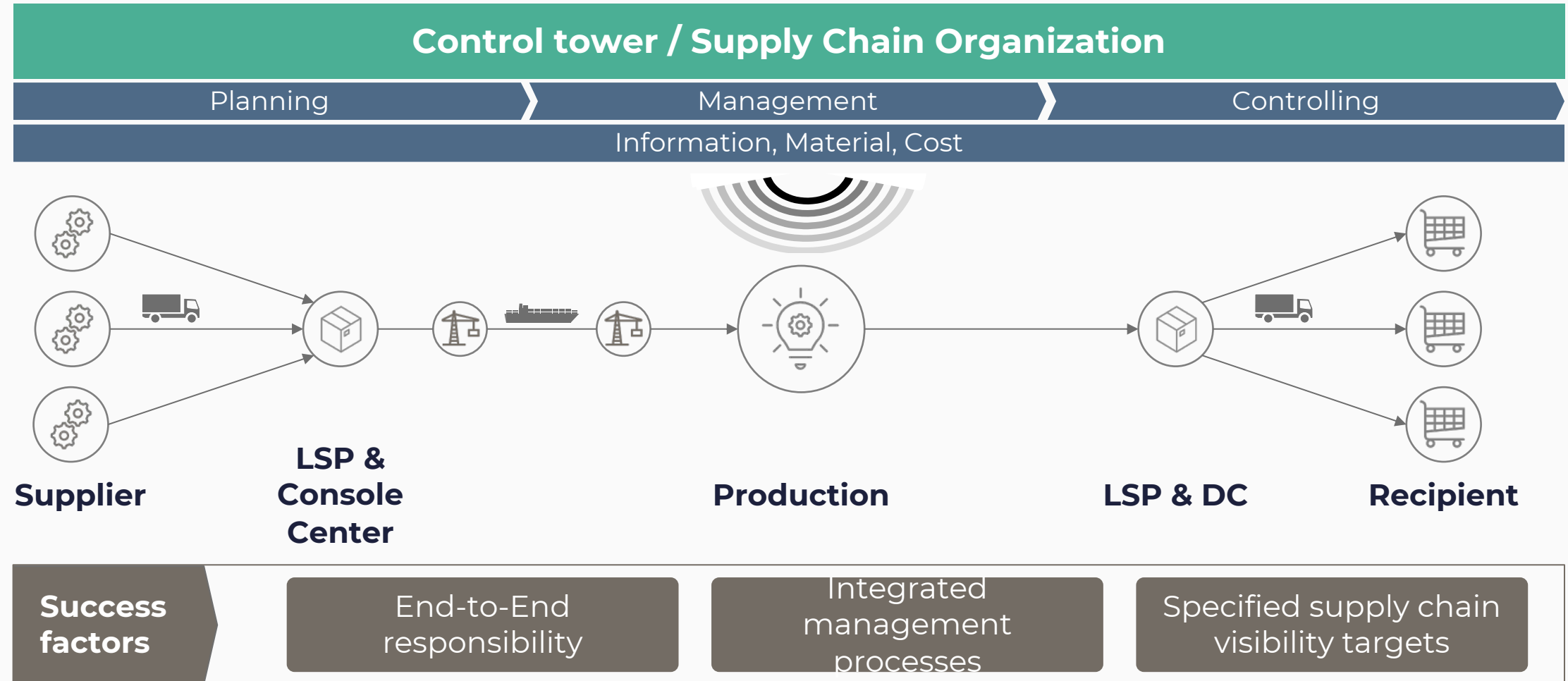


THE INTEGRATION OF REAL-TIME TRANSPARENCY INTO EXECUTION AND EXCEPTION MANAGEMENT PROCESSES ENABLES THE TRANSFER OF DATA INTO ACTION





AN END-TO-END SUPPLY CHAIN ORGANIZATION CAN LEVERAGE POTENTIAL FROM REAL-TIME TRACKING INTO SUPPLY CHAIN VISIBILITY



QUICK POI I

1. What is the greatest negative impact on your supply chain due to a lack of visibility?





WHY A SUPPLY CHAIN WITHOUT VISIBILITY IS COSTLY FOR YOUR COMPANY?



**SLOW RESOLUTION OF
LITIGATIONS AND
PENALTIES**



**INEFFICIENT WAREHOUSE
OPERATIONS DUE TO
DELAYS**



**LOSS OF PRODUCTIVITY FOR
TRANSPORT & CUSTOMER
SERVICE TEAMS**



**POOR OPTIMIZATION
OF TRANSPORT COSTS**



**COSTLY STOCK OUTS AND
PRODUCTION LINE HALTS**



**NO VISIBILITY ON CARRIERS
PERFORMANCE AND OTIF**



○

1

LOGISTICS EFFICIENCY

Increase Logistics efficiency on warehouses and decrease in safety stock levels



- Improved **resource utilization** in warehouse
- Reduced **material handling cost** for preparing loads with ETA
- Decreased **safety stock levels** with better carrier performance & controlled supply chain



○

2

SUPPLY CHAIN TEAMS PRODUCTIVITY

Increase productivity and reactivity of customer service and shipping teams



- **Streamlined communication** between carriers, customers & **shipping department**
- **Increased reactivity** of **customer service** teams
- Reduced **dispute management costs** with availability of factual data



○

3

TRANSPORT COST OPTIMISATION

Reduce transport costs and improve carriers' performance management



- **Optimized freight costs** by leveraging benefits for carriers
- **Reduced planned dwell** time at loading and unloading
- Better **carrier performance management** and increased **carrier efficiency**



○

4

ENHANCED CUSTOMER SATISFACTION

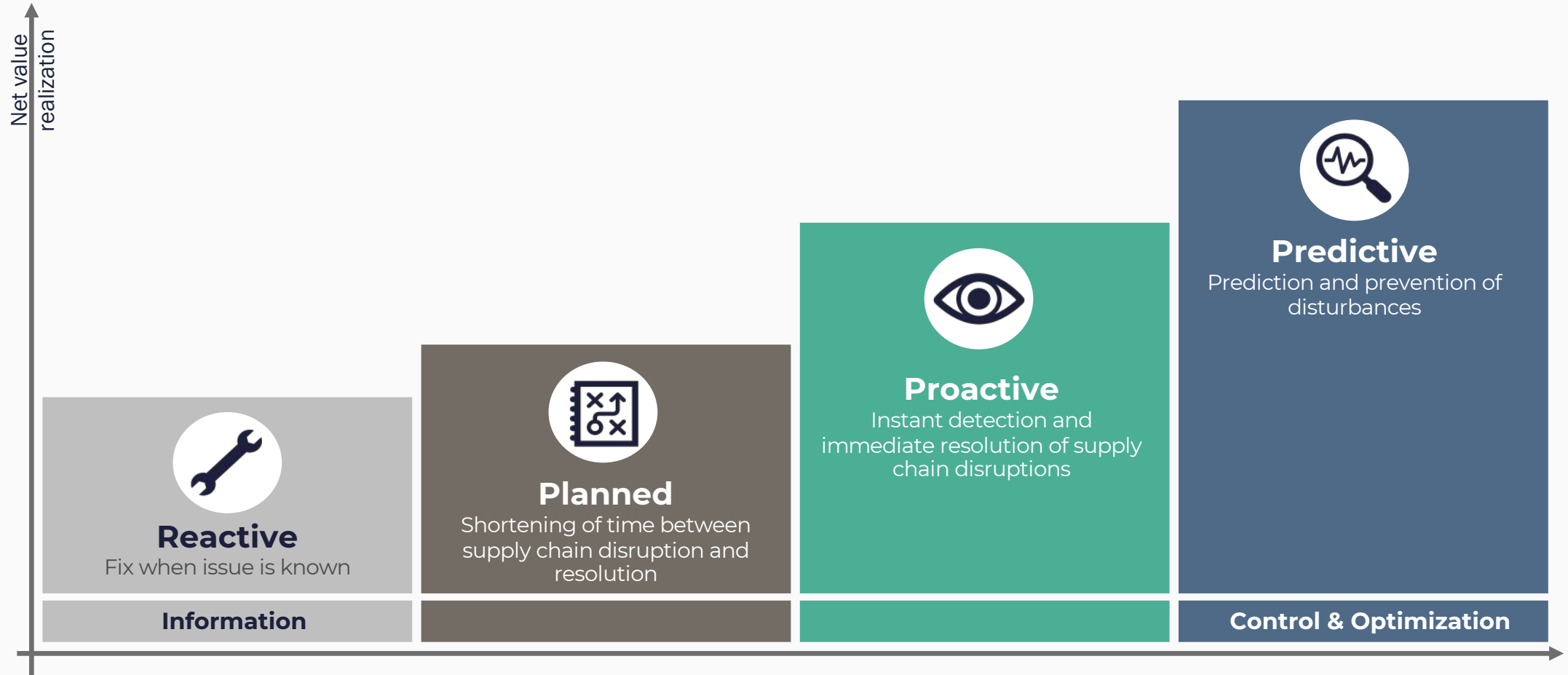
Increase sales and customer satisfaction through a better service and visibility



- Increased **customer satisfaction** (Reduce negative feedbacks on **NPS**)
- Potentially **increased sales** and **customers' retention** driven from differentiating service levels



REAL-TIME TRANSPARENCY ENABLES AN ORGANIZATION TO CHANGE FROM REACTIVE EXCEPTION MANAGEMENT TOWARDS PREVENTION OF EXCEPTIONS





A PROACTIVE AND EVENT-BASED SUPPLY CHAIN MANAGEMENT PROVIDES FULL POTENTIAL TO SUPPLY CHAIN ORGANIZATIONS



Full
supply chain visibility

- ✓ Reduction of communication delay
- ✓ Increased quality of information



Increased
supply chain resilience

- ✓ Increased reaction time available for problem solving
- ✓ Proactive prevention of exceptions



Reduced
supply chain cost

- ✓ Reduction of exception cost
- ✓ Optimized personnel deployment



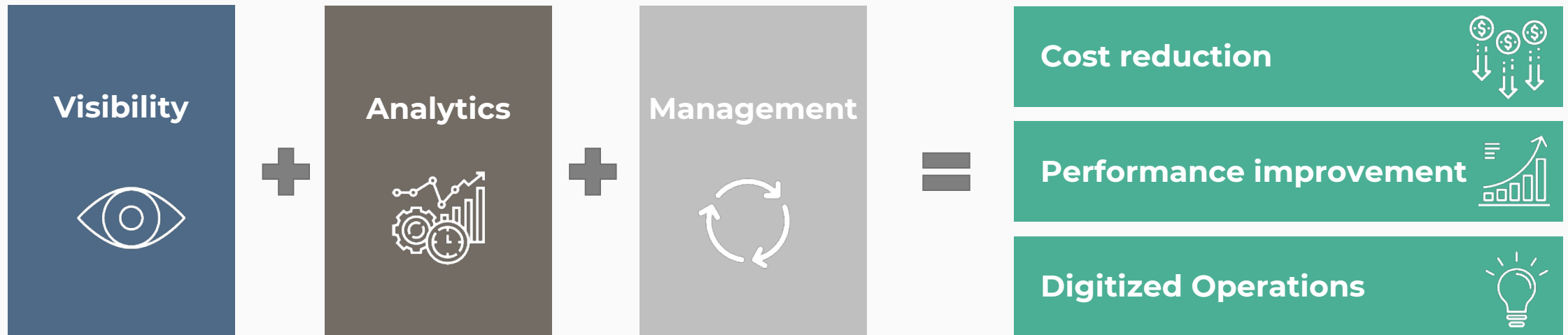
Improved
supply chain performance

- ✓ Higher service level
- ✓ Improved collaboration with stakeholders





4FLOW AND SHIPPEO PROVIDE VISIBILITY, ANALYTICS AND MANAGEMENT PROCESSES AS KEY SUCCESS FACTORS FOR IMPROVED SUPPLY CHAINS.





SHIPPEO

Q & A

4flow

Niklas Bergner

N.Bergner@4flow.com

Shippeo

Thomas Spieker

thomas.spieker@shippeo.com

4FLOW