

YOUTH EXHIBITS

(Includes 4-H, FFA & Grange)

Supervisor Patty Flores

Entry Forms Due: **No later than Monday, April 5th, 2019, 5:00 PM.** Forms may be mailed, faxed or hand delivered to the Showground's Administration Office. Fax number (805) 569-5595.

Please do not bring item in at this time.

Uses the Junior Entry Form located on line at www.earlwarren.com/sbfair or get one at the Earl Warren Showgrounds office. The following information **MUST** be included on the form: All personal information (age, grade, etc.), division and description of item. Please use a separate form for each child. A separate form must be used for group entries with teacher/leader name.

***Entries Received: Home Arts, Fine Arts, Arts & Crafts, and Literature:**

Thursday April 11th 4:00 PM to 7:00 PM
Friday April 12th 4:00 PM to 7:00 PM
Saturday April 13th 9:00 AM to 1:00 PM

***Table Settings Received:**

Saturday April 20th 9:00 AM to 1:00 PM

***Baked Goods & Preserved Foods Received:**

Saturday April 20th 9:00 AM to 1:00 PM
Please no late entries.

***Horticulture & Cut Flowers Received:**

Saturday April 20th 9:00 AM to 1:00 PM

***Entries Released for Pick-up: In Exhibit Building**

Monday April 29th 4:00PM – 7:00PM

Entry Fees: None

Youth Department Local Rules:

1. This is an open fair. You do not have to be a resident of Santa Barbara County. All items must be pre-entered by April 5th, 2019 by 5:00 PM
2. Use the entry form provided in this Entry Handbook or pick up a form at Earl Warren Showgrounds. Please include all personal information, division and description of item. Please use separate entry forms for each child. Use a separate form for group entry with teacher/leader name on form.

3. Bring entries to the Exhibit Building on assigned date & time. **PLEASE NO LATE ENTRIES.**

4. A Junior shall be classified by age groups as of January 1, 2019:


JUNIOR 1	Ages Preschool, 4, 5, 6,
JUNIOR 2	Ages 7, 8, 9,
JUNIOR 3	Ages 10, 11, 12,
JUNIOR 4	Ages 13, 14, 15,
JUNIOR 5	Ages 16, 17, 18,

5. An exhibitor may only enter 15 items per division except table settings and group projects.
6. All entries must be prepared by the exhibitor within one year prior to the Opening date of the Fair.
7. Exhibitor's name needs to be on the **BACK** of entries.
8. Each entry in these divisions shall be made by youth.
9. The original signature of an **adult** is required on the entry form.
10. All entries will be scored on the Danish system. The Danish system of judging is based upon established standards of quality for each product. In this system, each exhibit is judged according to how well it meets that standard rather than how it compares with other exhibits. The Judges shall use the following guidelines:

1st	Superior.....	92% - 100%
2nd	Good	84% - 91%
3rd	Average.....	70% - 83%

11. The Fair Management shall not be responsible for accidents or losses that may occur to any of the exhibitors or exhibits at a show, and the exhibitors shall hold the management harmless and indemnify it against any legal proceedings arising from such an accident or loss.
12. **All articles must be claimed on Monday April 29th 4:00 PM to 7:00 PM, in Exhibit Building.**
13. All divisions are eligible to receive Best of Show ribbons & awards. Entries for consideration must have received a first-place ribbon.

ENTRY FORMS AVAILABLE ON-LINE @
www.earlwarren.com/fair



FEATURE BOOTHS SCHOOLS, CLUBS & ORGANIZATIONS

FEATURE EXHIBIT BOOTHS DIVISION 260

Set-up, Saturday April 20th, 9:00 AM - 1:00 PM

Feature exhibit booths provide schools, clubs & organizations an opportunity to acquaint the public with a specific phase of the club program. The booth can show what they have learned, activities in which they have participated, or contributions of their organization to the community. Judges will insist upon a high quality of products and materials used in the exhibit. A high scoring exhibit will be artistically arranged, colorful, attractive and well lighted.

Rules

1. Pre-enter by April 5th, 2019 (Space is limited.) Phone (805) 687-0766 for reservation.
 2. Feature booth shall be limited to one entry per school, club or organization.
 3. Booth must be designed, constructed and installed by school, club or organization members. Leaders may supervise only.
 4. The school, club or organization leader must sign entry forms.
 5. All booth materials must be stored within the booth.
- ALL PARTICIPANTS MUST BE SUPERVISED CLOSELY BY A RESPONSIBLE ADULT.**

CLASS, GROUP OR SCHOOL PROJECTS

A separate entry form is required using Class, Group or Club name. Please list student's names. Use average age of students to enter proper age group. Entries limited to space available. **You may display information on class project i.e., what they were studying, and school information to be displayed with work.**

JR. 1 Division 261	JR. 4 Division 264
JR. 2 Division 262	JR. 5 Division 265
JR. 3 Division 263	PC Division 266

***NOTE TO TEACHERS, TO MAKE IT EASY ON YOUR SELF PLEASE CHOOSE AN OPTION.**

1. If you want each child to be judged individually, **SEND a list of names with your entry form**
2. If you want project to be judged as a group/school project, **BRING a list of names with your project(s) ready to display.**

SERVICE-LEARNING EXPOSITION!

Service-learning projects must have occurred from April 2018 to present. Project showcases must include a 36" by 48" tri-fold display board. Other projects or materials used in the project are encouraged for display.

Division 267 - Elementary School Projects
 Division 268 - Middle School Projects
 Division 269 - High School Projects
 Division 270 - Post Secondary School Projects

SCHOOL YEARBOOK AND NEWSPAPER COMPETITION

May be 2017 or 2018 edition. Please use separate entry form. List Adviser's name and school name, address, and phone number and number of students.

Division 271 - Yearbook High School grades 9 – 12
 Division 272 - Yearbook Elementary 8th grade
 Division 273 - Yearbook Home School
 Division 274 - Newspaper High School grades 9 – 1
 Division 275 - Newspaper Elementary 8th grade
 Division 276 - Newspaper Home School

ARTS & CRAFTS

CERAMICS, CAST PIECES, KILN FIRED

JR. 1	Division 290
JR. 2	Division 291
JR. 3	Division 292
JR. 4	Division 293
JR. 5	Division 294

CERAMICS, ORIGINAL, KILN FIRED

JR. 1	Division 296
JR. 2	Division 297
JR. 3	Division 298
JR. 4	Division 299
JR. 5	Division 300

CLAY ART

JR. 1	Division 302
JR. 2	Division 303
JR. 3	Division 304
JR. 4	Division 305
JR. 5	Division 306

BUILDING SETS

JR. 1	Division 308
JR. 2	Division 309
JR. 3	Division 310
JR. 4	Division 311
JR. 5	Division 312

TINKER TOYS/FREE STYLE

JR. 1	Division 343
JR. 2	Division 344
JR. 3	Division 345
JR. 4	Division 346
JR. 5	Division 347

ERECTOR SET/FOLLOWING DIRECTIONS

JR. 1	Division 313
JR. 2	Division 314
JR. 3	Division 315
JR. 4	Division 316
JR. 5	Division 317

Box & Kits Judged on:

1. No missing pieces
2. Accurately built
3. How well constructed
4. Extra scenery ok

ERECTOR SET/FREE STYLE

JR. 1	Division 318
JR. 2	Division 319
JR. 3	Division 320
JR. 4	Division 321
JR. 5	Division 322

NOVELTY CRAFTS

JR. 1	Division 880
JR. 2	Division 881
JR. 3	Division 882
JR. 4	Division 883
JR. 5	Division 884

K'NEX

JR. 1	Division 323
JR. 2	Division 324
JR. 3	Division 325
JR. 4	Division 326
JR. 5	Division 327

HOBBY CRAFTS

JR. 1	Division 348
JR. 2	Division 349
JR. 3	Division 350
JR. 4	Division 351
JR. 5	Division 352

LEGO/BOX SET

JR. 1	Division 328
JR. 2	Division 329
JR. 3	Division 330
JR. 4	Division 331
JR. 5	Division 332

GIFT BASKET

JR. 1	Division 353
JR. 2	Division 354
JR. 3	Division 355
JR. 4	Division 356
JR. 5	Division 357

LEGO/FREE STYLE

JR. 1	Division 333
JR. 2	Division 334
JR. 3	Division 335
JR. 4	Division 336
JR. 5	Division 337

JEWELRY

JR. 1	Division 358
JR. 2	Division 359
JR. 3	Division 360
JR. 4	Division 361
JR. 5	Division 362

TINKER TOYS/KIT

JR. 1	Division 338
JR. 2	Division 339
JR. 3	Division 340
JR. 4	Division 341
JR. 5	Division 342

ORNAMENTAL DECORATION

JR. 1	Division 363
JR. 2	Division 364
JR. 3	Division 365
JR. 4	Division 366
JR. 5	Division 367

PAPER CRAFT

JR. 1	Division 368
JR. 2	Division 369
JR. 3	Division 370
JR. 4	Division 371
JR. 5	Division 372

RUBBER STAMP ART

JR. 1	Division 373
JR. 2	Division 374
JR. 3	Division 375
JR. 4	Division 376
JR. 5	Division 377

HANDMADE CARDS

JR. 1	Division 885
JR. 2	Division 886
JR. 3	Division 887
JR. 4	Division 888
JR. 5	Division 889

SCRAP BOOK

JR. 1	Division 378
JR. 2	Division 379
JR. 3	Division 380
JR. 4	Division 381
JR. 5	Division 382

STENCILED ITEMS

JR. 1	Division 383
JR. 2	Division 384
JR. 3	Division 385
JR. 4	Division 386
JR. 5	Division 387

STRING ART

JR. 1	Division 388
JR. 2	Division 389
JR. 3	Division 390
JR. 4	Division 391
JR. 5	Division 392

STRUCTURES

JR. 1	Division 393
JR. 2	Division 394
JR. 3	Division 395
JR. 4	Division 396
JR. 5	Division 397

WOODCRAFTS, ORIGINAL

JR. 1	Division 398
JR. 2	Division 399
JR. 3	Division 400
JR. 4	Division 401
JR. 5	Division 402

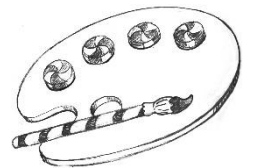
**WOODCRAFTS, PURCHASED
PAINTED / DECORATED**

JR. 1	Division 403
JR. 2	Division 404
JR. 3	Division 405
JR. 4	Division 406
JR. 5	Division 407

MISCELLANEOUS ART PROJECTS

JR. 1	Division 408
JR. 2	Division 409
JR. 3	Division 410
JR. 4	Division 411
JR. 5	Division 412

FINE ARTS



All framed pictures should be ready to hang, for the safety of your picture. All entries must be completely dry. Please label your entry with your name on back.

ACRYLIC

JR. 1	Division 413
JR. 2	Division 414
JR. 3	Division 415
JR. 4	Division 416
JR. 5	Division 417

BLACK AND WHITE, ANY MEDIA

JR. 1	Division 418
JR. 2	Division 419
JR. 3	Division 420
JR. 4	Division 421
JR. 5	Division 422

COLORED PENCIL

JR. 1	Division 423
JR. 2	Division 424
JR. 3	Division 425
JR. 4	Division 426
JR. 5	Division 427

COMPUTER GENERATED ART

JR. 1	Division 428
JR. 2	Division 429
JR. 3	Division 430
JR. 4	Division 431
JR. 5	Division 432

COMPUTER ENHANCED ART

JR. 1	Division 433
JR. 2	Division 434
JR. 3	Division 435
JR. 4	Division 436
JR. 5	Division 437

CRAYON

JR. 1	Division 438
JR. 2	Division 439
JR. 3	Division 440
JR. 4	Division 441
JR. 5	Division 442

FELT PEN, COLOR

JR. 1	Division 443
JR. 2	Division 444
JR. 3	Division 445
JR. 4	Division 446
JR. 5	Division 447

FINGER PAINTING

JR. 1	Division 448
JR. 2	Division 449

OILS

JR. 1	Division 450
JR. 2	Division 451
JR. 3	Division 452
JR. 4	Division 453
JR. 5	Division 454

PASTELS

JR. 1	Division 455
JR. 2	Division 456
JR. 3	Division 457
JR. 4	Division 458
JR. 5	Division 459

WATERCOLORS

JR. 1	Division 461
JR. 2	Division 462
JR. 3	Division 463
JR. 4	Division 464
JR. 5	Division 465

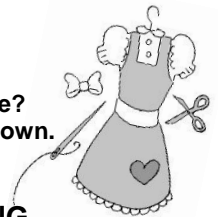
MIXED TECHNIQUE

JR. 1	Division 467
JR. 2	Division 468
JR. 3	Division 469
JR. 4	Division 470
JR. 5	Division 471

CLOTHING & TEXTILES

Please indicate on entry form

1. How many years of experience.
2. Was it a school project/4-H or Grange?
3. Did you use a pattern or create your own.



CROCHET/KNITTING

JR. 1	Division 473
JR. 2	Division 474
JR. 3	Division 475
JR. 4	Division 476
JR. 5	Division 477

NEEDLE ART

JR. 1	Division 479
JR. 2	Division 480
JR. 3	Division 481
JR. 4	Division 482
JR. 5	Division 483

SEWING

JR. 1	Division 485
JR. 2	Division 486
JR. 3	Division 487
JR. 4	Division 488
JR. 5	Division 489

WEAVING

JR. 1	Division 490
JR. 2	Division 491
JR. 3	Division 492
JR. 4	Division 493
JR. 5	Division 494

COLLECTIONS

Rules:

Give a brief description of your collection (i.e. why it is important to you, how the collections started, etc.)

JR. 1	Division 495
JR. 2	Division 496
JR. 3	Division 497
JR. 4	Division 498
JR. 5	Division 499

HISTORY

JR. 1	Division 500
JR. 2	Division 501
JR. 3	Division 502
JR. 4	Division 503
JR. 5	Division 504

MISSIONS

JR. 1	Division 505
JR. 2	Division 506
JR. 3	Division 507
JR. 4	Division 508
JR. 5	Division 509

LITERATURE

If written in a language other than English, English translation must accompany the paper.

CREATIVE WRITING, FICTION

JR. 1	Division 510
JR. 2	Division 511
JR. 3	Division 512
JR. 4	Division 513
JR. 5	Division 514

CREATIVE WRITING, NON-FICTION

JR. 1	Division 515
JR. 2	Division 516
JR. 3	Division 517
JR. 4	Division 518
JR. 5	Division 519

CREATIVE WRITING, WITH PROPS

JR. 1	Division 521
JR. 2	Division 522
JR. 3	Division 523
JR. 4	Division 524
JR. 5	Division 525

POETRY

JR. 1	Division 527
JR. 2	Division 528
JR. 3	Division 529
JR. 4	Division 530
JR. 5	Division 531

CREATE A PICTURE BOOK

Rules:

1. To be designed as a book or an illustrated
2. Must have a rigid cover. Example: sewn, staples or in a binder.
3. Text may be typed or printed.

JR. 1	Division 533	JR. 4	Division 536
JR. 2	Division 534	JR. 5	Division 537
JR. 3	Division 535		

PHOTOGRAPHY



Photography Local Rules:

1. Titles are encouraged.
2. We encourage mounting with no mount larger than 16 x 20 or no smaller than 5 X 7. Maximum width of matting 3". Directional arrow on prints in question as to how to hang. No pictures of pictures are permitted.
3. No print previously entered in the Santa Barbara Fair & Expo is eligible. Prints to be taken between April 5th, 2017 and Fair 2018.
4. All possible care will be given to all prints entered. However, the Fair cannot accept responsibility for any loss or damage.

BLACK AND WHITE

JR. 1	Division 539
JR. 2	Division 540
JR. 3	Division 541
JR. 4	Division 542
JR. 5	Division 543
PC	Division 544

COLOR

JR. 1	Division 545
JR. 2	Division 546
JR. 3	Division 547
JR. 4	Division 548
JR. 5	Division 549
PC	Division 550

COMPUTER ENHANCED

JR. 1	Division 551
JR. 2	Division 552
JR. 3	Division 553
JR. 4	Division 554
JR. 5	Division 555

POLAROID

JR. 1	Division 556
JR. 2	Division 557
JR. 3	Division 558
JR. 4	Division 559
JR. 5	Division 560
PC	Division 561

FORESTRY

JR. 1	Division 583
JR. 2	Division 584
JR. 3	Division 585
JR. 4	Division 586
JR. 5	Division 587

PRINTS FROM FILM

JR. 1	Division 562
JR. 2	Division 563
JR. 3	Division 564
JR. 4	Division 565
JR. 5	Division 566
PC	Division 567

PLANT SCIENCE

JR. 1	Division 890
JR. 2	Division 891
JR. 3	Division 892
JR. 4	Division 893
JR. 5	Division 894

PHOTO STORY

A series of 3 to 5 pictures that tell a story. Nature's Seasons, flower's progression, child's first haircut, etc. mounted individually or grouped in one display and numbered in proper sequence.

JR. 1	Division 568
JR. 2	Division 569
JR. 3	Division 570
JR. 4	Division 571
JR. 5	Division 572

WILDLIFE

JR. 1	Division 588
JR. 2	Division 589
JR. 3	Division 590
JR. 4	Division 591
JR. 5	Division 592

ANIMAL SCIENCE

JR. 1	Division 895
JR. 2	Division 896
JR. 3	Division 897
JR. 4	Division 898
JR. 5	Division 899

UNDERWATER

JR. 1	Division 573
JR. 2	Division 574
JR. 3	Division 575
JR. 4	Division 576
JR. 5	Division 577

ENVIRONMENTAL SCINCES

JR. 1	Division 900
JR. 2	Division 901
JR. 3	Division 902
JR. 4	Division 903
JR. 5	Division 904

SCIENCE

Not limited to just Collections. Collections must have been collected within two years of the opening day of the fair.

ENTOMOLOGY

JR. 1	Division 578
JR. 2	Division 579
JR. 3	Division 580
JR. 4	Division 581
JR. 5	Division 582

MARINE SCIENCE

JR. 1	Division 594
JR. 2	Division 595
JR. 3	Division 596
JR. 4	Division 597
JR. 5	Division 598

COMPUTER SCIENCE

JR. 1	Division 600
JR. 2	Division 601
JR. 3	Division 602
JR. 4	Division 603
JR. 5	Division 604

ROCKETRY, AEROSPACE

- JR. 1 Division 606
- JR. 2 Division 607
- JR. 3 Division 608
- JR. 4 Division 609
- JR. 5 Division 610

SCIENCE + TECHNOLOGY

- JR. 1 Division 905
- JR. 2 Division 906
- JR. 3 Division 907
- JR. 4 Division 908
- JR. 5 Division 909

ELECTRICITY

- JR. 1 Division 612
- JR. 2 Division 613
- JR. 3 Division 614
- JR. 4 Division 615
- JR. 5 Division 616

ENVIRONMENTALLY FRIENDLY

- JR. 1 Division 618
- JR. 2 Division 619
- JR. 3 Division 620
- JR. 4 Division 621
- JR. 5 Division 622

ROBOTICS

- JR. 1 Division 623
- JR. 2 Division 624
- JR. 3 Division 625
- JR. 4 Division 626
- JR. 5 Division 627

MISCELLANEOUS PROJECTS

- JR. 1 Division 628
- JR. 2 Division 629
- JR. 3 Division 630
- JR. 4 Division 631
- JR. 5 Division 632

**BAKED & PRESERVED
FOODS**

ALL ENTRIES MUST HAVE LIST OF INGREDIENTS INCLUDED WITH ENTRY.

Entries Received: **Saturday, April 20th, 9AM – 1:00PM**
 Entries should consist of: **Six (6):** cookies, candies, bars **Three (3):** cupcakes, muffins, biscuits, one half (1/2): loaf bread, cake, pie

Whole-decorated cake may use dummy base. All baked items except decorated cakes should be on pie pans, or plates, which are disposable. Please cover with any saran wrap, baggy, etc. **EXCEPTION: Decorated Cakes. NO refrigerated items.**

Please use icing that will hold up during fair time. Royal or Butter cream icing would be recommended. These are available at any cake supply store. Any entry without ingredient list will be turned away.

CONFECTIONS

- JR. 1 Division 634
- JR. 2 Division 635
- JR. 3 Division 636
- JR. 4 Division 637
- JR. 5 Division 638

DECORATED ITEMS

- JR. 1 Division 639
- JR. 2 Division 640
- JR. 3 Division 641
- JR. 4 Division 642
- JR. 5 Division 643

BAKED GOODS

- JR. 1 Division 644
- JR. 2 Division 645
- JR. 3 Division 646
- JR. 4 Division 647
- JR. 5 Division 648

PRESERVED FOODS



JR. 1	Division 649
JR. 2	Division 650
JR. 3	Division 651
JR. 4	Division 652
JR. 5	Division 653

No preserved meat, fowl or fish accepted. Each exhibitor must bring two jars of preserved foods. One jar will be opened and judged the other for display Entry Sheets must list the type of produce and the method or process used. Low acid foods must be canned under pressure, no paraffin seals. All canning exhibits must be sealed jars. All dried food in 1/2-pint jars. Please place a label with your name on the bottom of your jars.

TABLE SETTINGS

Single Place Setting

JR. 1	Division 654
JR. 2	Division 655
JR. 3	Division 656
JR. 4	Division 657
JR. 5	Division 658

Four Place Settings

JR. 1	Division 660
JR. 2	Division 661
JR. 3	Division 662
JR. 4	Division 663
JR. 5	Division 664

Table settings to be received: Saturday April 20th, between 9:00 AM and 1:00pm. For single place settings, an 18"x22" tabletop will be provided for your use. Your layout should include one or two place settings and your centerpiece. A 48" x 30" table will be provided for the four place settings categories. All work must be done by the exhibitor. Tablecloth should have 10-14" overhang or a tabletop size cover, any texture. Check a cookbook for proper table settings.

HORTICULTURE

Entries Received:
Saturday, April 20th, 9:00 AM – 1:00 PM.

Rules:

1. Entries must have been grown by the exhibitor.
2. All State rules apply. (Available upon request)
3. Please place on a disposable plate.

POTTED PLANTS

Division - 666 - 12 YEARS OF AGE & UNDER.
Division - 667 - 13-18 YEARS OF AGE.

ARRANGEMENTS

Entries Received:
Saturday, April 20th, 9:00 AM – 1:00 PM

Division - 668 - 12 YEARS OF AGE & UNDER
Division - 669 - 13 - 18 YEARS OF AGE

CUT FLOWERS

No pre-entry
Division - 670 – 12 YEARS OF AGE & UNDER
Division - 671 – 13-18 YEARS OF AGE

DRESS YOUR FAVORITE FRUIT OR VEGETABLE

Fruit / vegetable must be dressed. You may purchase your fruit / vegetable.

Division - 672 – 12 YEARS OF AGE & UNDER
Division - 673 – 13-18 YEARS OF AGE

Produce characters must be reinforced and placed on a strong and disposable base not to exceed 12" X 16".
Be Creative.

FRUITS & VEGETABLES

Entries Received:
Saturday, April 20th, 9:00 AM – 1:00 PM

Citrus

Division - 676 - 12 YEARS OF AGE & UNDER
Division - 677 - 13-18 YEARS OF AGE

Subtropical

Division - 678 - 12 YEARS OF AGE & UNDER
Division - 679 - 13-18 YEARS OF AGE

Plate Display

Division - 680 - 12 YEARS OF AGE & UNDER
Division - 681 - 13-18 YEARS OF AGE & UNDER

Avocados

Division - 682 - 12 YEARS OF AGE & UNDER
Division - 683 - 13-18 YEARS OF AGE

Vegetables

Division - 684 - 12 YEARS OF AGE & UNDER
Division - 685 - 13-18 YEARS OF AGE & UNDER

Unusual or largest Fruit or Vegetables

Division - 686 - 12 YEARS OF AGE & UNDER
Division - 687 - 13-18 YEARS OF AGE & UNDER



DO NOT WRITE IN SHADED AREAS

ENTRY INFORMATION MUST BE COMPLETE

Junior Entry Form

EXHIBITOR CODE:

Please print, type, or use label from book

Last Name First Name

Mailing Address

City, Zip Area Code & Phone Number

JUNIOR DEPARTMENT

Santa Barbara Fair & Expo

3400 Calle Real
SANTA BARBARA, CA 93105
(805) 687-0766

Photocopies Accepted

Email: _____

THIS SPACE MUST BE FILLED OUT & SIGNED!

Exhibitor's Age _____ Grade in School _____

I certify that this entry is the project of the exhibitor and is eligible to be shown in accordance with the rules of this show.

Chapter-School-Club

Signed:

Signature of Parent or Legal Guardian

OFFICE USE ONLY	DIVISION NUMBER	CLASS NUMBER	DESCRIBE ENTRY (INCLUDE SPECIES, COLOR, SIZE, NUMBER, OF ITEMS)
1			
2			
3			
4			
5			
6			
7			
8			
9			
10			
11			
12			
13			
14			

LIABILITY - This receipt limits our liability - PLEASE READ

Please accept the entries (property)described herein. I am the owner of the property specified herein or the supervisor of the project with authorization to act as agent and to bind the owners of the property in all matters herein. I have read, understand and agree to abide by all the rules and regulations governing the fair entries as published in the official Entry Book. I agree to indemnify, defend, and save harmless the fair, its officers, agents and employees from any and all claims and losses accruing or resulting to any and all persons in connection with my participation in the Fair and from any and all claims and losses accruing or resulting to any person, firm or corporation who may be injured or damaged as a result of my participation.

Signed: _____
Owner/Agent or Parent of Junior/Signature

Date _____

DO NOT WRITE IN SHADED AREAS

EXHIBITOR CODE:

Please print or type

School, Class or Organization

Address

City, Zip

Phone Number

ENTRY INFORMATION MUST BE COMPLETE

ENTRY FORM

SCHOOL /GROUP

SANTA BARBARA FAIR & EXPO

3400 CALLE REAL

SANTA BARBARA, CA 93105

(805) 687-0766

Photocopies Accepted

School/Group Entry Form

FILL OUT COMPLETELY & SIGN

I certify that this entry is the project of the exhibitor and is eligible to be shown in accordance with the rules of this show.

School - Class - Organization

Signature of Instructor or Leader

OFFICE USE ONLY	DIVISION NUMBER	CLASS NUMBER
1		
2		
3		
4		
5		
6		

DESCRIBE ENTRY (INCLUDE SPECIES, COLOR, SIZE, NUMBER, OF ITEMS)

Please note:

If you want the individual child's name on their entry, you must submit a list of the names, otherwise all entries will be put under school's or group's name

LIABILITY - This receipt limits our liability - PLEASE READ

Please accept the entries (property)described herein. I am the owner of the property specified herein or the supervisor of the project with authorization to act as an agent and to bind the owners of the property in all matters herein. I have read, understand and agree to abide by all the rules and regulations governing the fair entries as published in the official Entry Book. I agree to indemnify, defend, and save harmless the fair, its officers, agents and employees from any and all claims and losses accruing or resulting to any and all persons in connection with my participation in the Fair and from any and all claims and losses accruing or resulting to any person, firm or corporation who may be injured or damaged as a result of my participation.

Signed: _____

Date _____

Owner/Agent or Parent/Leader/Teacher of Junior Exhibitor