

CellSoft® offers softer substrates that match native tissue stiffness

CellSoft® 100mm round culture dish:

Soft silicone elastomer coated culture dish.

Moduli ranges from 1—80 kPa

Ideal for growing batch sizes and passaging stem cells, progenitor lines and neural tissues for expansion

CellSoft® 100mm culture dish has total growth surface area of 55cm²

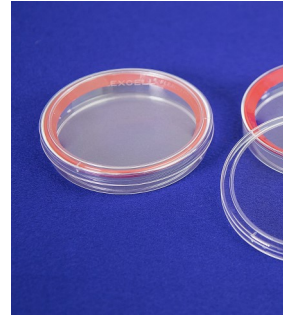
Optically clear for direct viewing of cells with inverted or upright microscopes

Sterile, Pre-packaged with choice of covalently bonded matrices Collagen (Type I) or Untreated surfaces.

Low autofluorescence for use in immunohistochemical assays or with fluorescent probes.

Store at room temperature in the dark or out of direct light for up to 1 year.

This product is intended for use in life science research and development only.



ORDERING INFORMATION (all prices in US Dollars)

Catalog Number	Product/Item	kPa Range:
CellSoft 100mm-U	CellSoft® Culture Plate — Untreated	1/5/10/20/40/80
CellSoft 100mm-C	CellSoft® Culture Plate — Collagen Type I	1/5/10/20/40/80