

FLEXCELL[®] TISSUE TRAIN[®] CULTURE SYSTEM

3D cell culture with or without cyclic tension

- Create tethered, linear, 3D, cell-seeded, collagen gels using a Trough Loader mold device and a Tissue Train[®] culture plate (Fig. 4–5).
- Apply a load regimen of uniaxial cyclic strain using a Flexcell[®] Tension System and Arctangle[®] loading posts (Fig. 4).
- Build user-defined strain regimens to simulate heart rate, walking, running, and other dynamic exercise patterns.
- Observe cell responses in a 3D matrix with phase contrast, fluorescent, or scanning confocal microscopes.

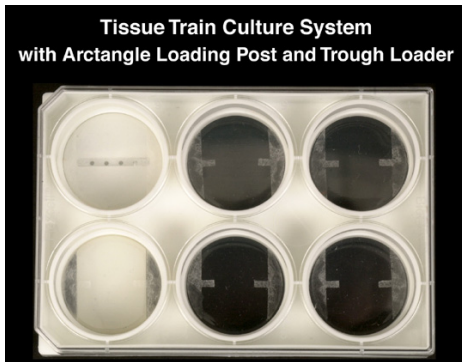


Figure 4. Tissue Train[®] culture plate with nylon mesh anchors, Trough Loader, and Arctangle[®] loading post.

Tissue Train[®] System includes:

- Laptop computer with 15" monitor
- FlexSoft[®] FX-5000[™] software
- FX-5000[™] Tension FlexLink[®]
- Tissue Train[®] Baseplate Kit
- Tubing and Adaptor Kit

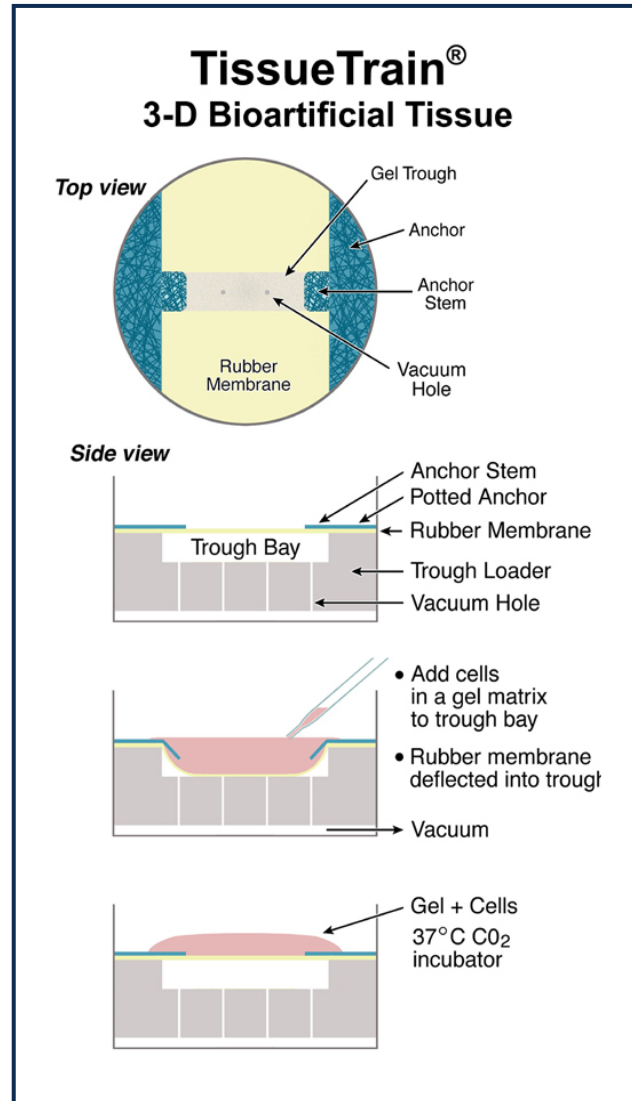


Figure 5. Schematic of protocol for making cell-seeded gel constructs with the Tissue Train[®] Culture System.

ORDERING INFORMATION (Please contact distributor for pricing)

Catalog Number	Product/Item	Price
FX-5000TT	Flexcell [®] FX-5000 [™] Tissue Train [®] System	

TENSION EQUIPMENT