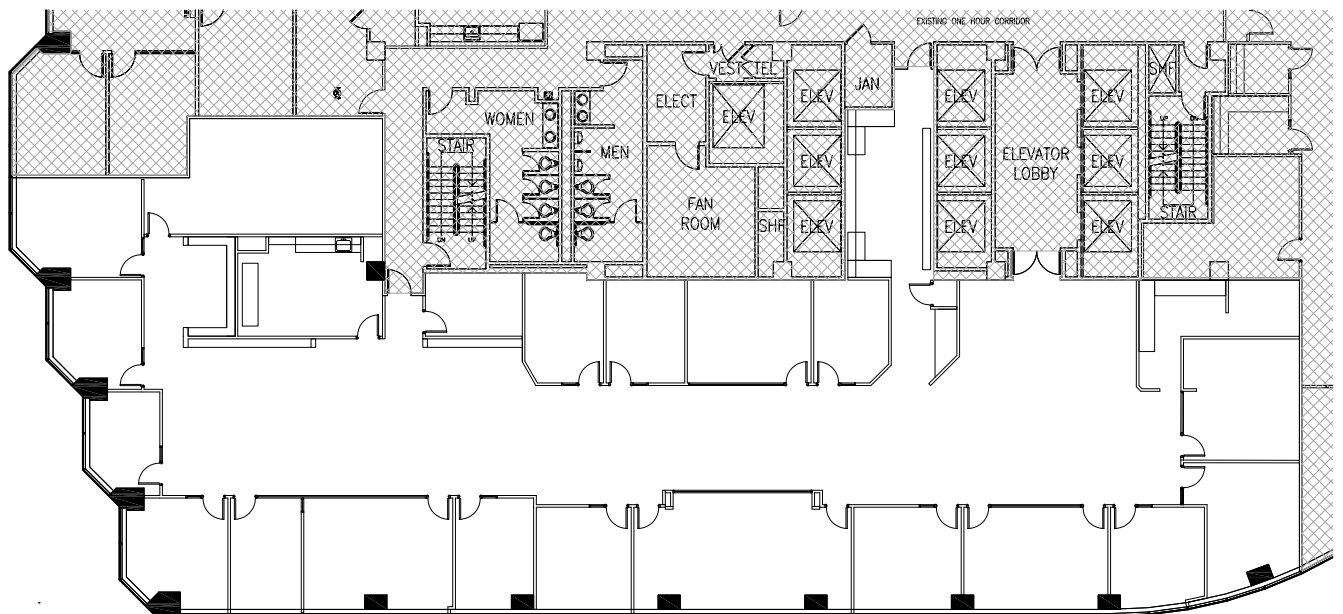


LAKE MERRITT
PLAZA

SUITE 700 - 9,106 RSF

Double door entry off elevator, lake view space. Current law firm build, 17+ private offices, conference rooms, kitchen, open area.



lakemerritt-plaza.com

Charles F. Allen, LEED AP
Principal, Managing Director
RE Lic #01158267
charlie.allen@avisonyoung.com
510.254.4260

Anthony Shell, LEED® AP
Principal
RE Lic #01743033
anthony.shell@avisonyoung.com
510.254.4263

Amber Merrigan
Vice President
RE Lic #01905162
amber.merrigan@avisonyoung.com
510.254.4267

BEACON
CAPITAL PARTNERS
DISTINCTIVE WORKPLACES
DISTINCTLY BEACON

**AVISON
YOUNG**