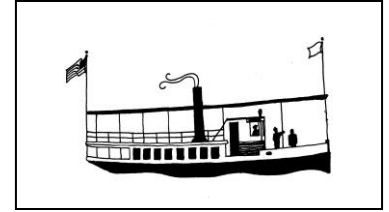


Sunapee Echoes

Sunapee, New Hampshire Historical Society, Inc.
P. O. Box 501, Sunapee, NH 03782
sunapeehistoricalsociety.org
e-mail: sunapeehistory@gmail.com
603-763-9872
Fall 2020



WHAT'S HAPPENING?

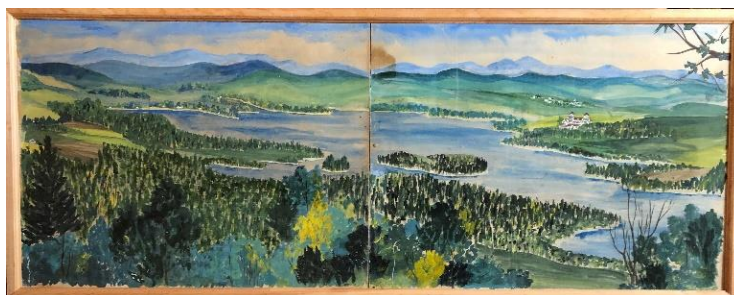
Covid19 may have caused us to keep the Museum and the Archives closed this summer, but we've been busy! We've missed seeing you but have tried to provide some suitable alternatives to our displays and programs to keep you interested in Sunapee's rich history.

We turned the program we'd planned about the train era in Sunapee into a video posted on YouTube. You'll also find there a video on the history of the Granliden Hotel—our substitute for the program we'd planned to do on the major hotels. We're pleased that both have reached more fans than our in-person programs would have. If you missed them, here's the link to our channel: <https://www.youtube.com/channel/UCa5laLbSd6llkriIDouK-Vw> or you can follow the links on our web page.

Lois Gould has been the prime mover behind the changing exhibits just inside the big glass doors at the Museum. We've had Woodbine Cottage, summer sports, trains, women's suffrage, and Sunapee's various post offices on display. Now we've added some Halloween touches that will stay through to early November when we'll shut the museum down for the winter and close the big barn door.

Rosemary Gates kept the gardens and window boxes at the museum looking great and regularly cleaned the glass doors. Lela Emery, with some help from family and friends, scraped and stained the back of the building and part of the long side. Patricia Halpin and Lucy Mueller watered and weeded at the Archives. It takes a village!

We've continued to receive donations, including the intriguing painting shown here from Pam and Greg Weiss. It's reputed to have been painted by the caretaker at



SooNipi Lodge and we're delighted to add it to our collection of works by local artists. Other items include a souvenir plate in pristine condition, copies of *New Hampshire Troubadour* magazine, and an antique Victor victrola. If you have Sunapee things you no longer want, please think of us. We're always glad to receive treasures including photos that help us document people and events in Sunapee. If you're not ready to part with the photos, we can scan and return them. Thank you!

Burpee Hill Construction has been busy this month installing our new HVAC system at the Archives. Once they've finished their work, we're planning to go back to our usual Monday afternoons there, properly masked and distant, of course. So, watch for our OPEN flag and stop by for a visit.

With high hopes—but no guarantees—for next summer, we have established dates for our history cruise—July 5th and August 6th, both Monday evenings. We'll cover the west shore from Burkehaven to Job's Creek, Covid19 permitting. Keep your fingers crossed and hope for the best!

Yes, Barbara is still working on her books—Volume 2 of *Sunapee's Historic Buildings and Places* and revisions to Volume 1. She decided to add some early history and has been to Keene several times to document deeds from the years when Sullivan County was part of Cheshire County. The end product will be two fully indexed volumes that include many details of Sunapee's history. We'll let you know when it is available.

As usual, fall has been lovely here at Sunapee with normally vibrant colors in spite of our drought. I hope you've enjoyed fall, too. Please stay well!

Becky

Did you know?.....

All the talk of problems at the US Post Office has us remembering all our hard-working postmasters. I know you're familiar with our two current post offices—one in Sunapee and one in George's Mills. But did you know that they once were in other locations and there were more of them?

The first post office in **Sunapee**—then known as Wendell until the town name was changed to Sunapee in 1853—was established in December 1832 with Dr. John Hopkins as postmaster operating from his home near the current location of St. Joachim's Church. In 1838, he moved to Central Street, and the post office went with him. After that, it was run in Charles Knowlton's store on High Street (1845-1861) and then in NP Baker's store (the Northcape Design building) (1861-1885). From 1885-1926 the post office moved back and forth between Baker's store and Knowlton's across the street (Knowlton's having been moved down from High Street in 1863) depending on which party was in office in Washington! Our first stand-alone post office—the brick building on Central Street—was built in 1926 while son-of-Sunapee and former governor John Bartlett was serving as First Assistant Postmaster General, and he claimed credit for providing the larger quarters. That's the PO that many remember, perched on its steep side street between Central Street and Main Street. *See photo on page 4.* Governor Bartlett always thought the topography of that street should be fixed, but it never was. In 1976, the Sunapee Post Office moved to its current location on Elm Street.



The **George's Mills** Post Office was located in the Russell's Store building (4 Prospect Hill Road) from 1849-1986. It had a separate entrance at the left end of the building and was run for many years by Ruth Almeder, Postmaster. Some of us remember the store as Towsley's. In 1986, the post office moved to its current location on Rte. 11.

Did you ever wonder why there's a Post Office Road in the **Wendell** part of town (near the intersection of routes 11 and 103)? That was the second home of the Wendell Post Office from 1953-1984, it having been located in the Wendell Depot from 1901 until 1953. That small building was closed in 1984 and eventually was retired to another location and later dismantled.

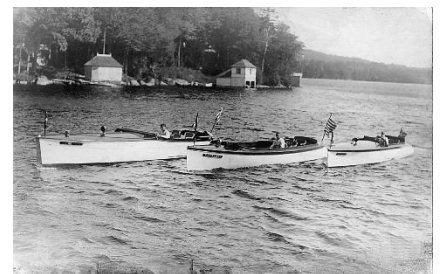


Edgemont/Mt. Sunapee Post Office was operated by three generations of the Perkins family at Perkins Store on Route 103 just west of the traffic circle from 1906 to 1992. The store originally faced the railroad tracks, but was turned 180 degrees to face the road when it was improved. The building is still there today.

The **Burkehaven** Post Office was first established at Lake View House, predecessor to the Burkehaven Hotel, in 1890. When Warren Morgan built the Burkehaven store in 1912, it moved there, and he served as postmaster until 1948. After that, it was run by his daughter, Dorothy Gould, until it closed in 1970.



The mail was first brought by horse-drawn coach and later by train. In the warm months, it was delivered to hotels around the lake that had postal substations and to George's Mills, Burkehaven, and Blodgett's post offices by steamboat and later by mailboats run by Osborne's Marine.



In Memoriam.

Our good friend—everyone’s good friend—*Tony Bergeron* passed away much too soon in August. The things he did for this town are too numerous to mention here, and are well-known by all. At the Historical Society, we have fond memories of time he spent helping us construct the model cottage inside the museum, doing other maintenance chores, and serving on the board of directors. He is missed!

We have also lost long-time member *Mim O’Day*. Mim spend her last years in Florida, but enjoyed keeping up with Sunapee via our newsletter and never missed an opportunity to offer encouragement along with her annual donation. We’d love to know more about Mim’s time in Sunapee and hope you’ll contact us if you knew her. Thanks!

When you use their services, please thank these businesses for their support:

Barton Insurance Agency

Dunnell’s Plumbing & Heating

Lake Sunapee Insurance Agency



SUNAPEE
★CRUISES★

Bar Harbor Bank and Trust

Pennyroyal Hill Land Surveying & Forestry

And when ordering from Amazon, please use the **smile.amazon.com** website and list the Sunapee, NH Historical Society as your chosen charity. Thanks!



Many thanks to all who have already sent in their 2020 donations!

2020 MEMBERSHIP – RENEWALS – CONTRIBUTIONS

NAME: _____

MAILING ADDRESS: _____

TOWN, STATE, ZIP: _____

PHONE: _____ E-MAIL: _____

CHECK MEMBERSHIP TYPE:

\$15 Individual \$25 Family \$50 Business \$100 Patron \$300 Sustainer

CONTRIBUTIONS:

Donation \$ _____ I wish to remain anonymous

NEWSLETTER

Send future newsletters by e-mail
 Send future newsletters by postal mail

Please make checks payable to:

Sunapee Historical Society, Inc.
P.O. Box 501
Sunapee, NH 03782

SHS is a 501(c)3 organization
02-0338273

Thank you!

Sunapee Echoes

Sunapee Historical Society

PO Box 501

Sunapee, NH 03782

2020-2021 Board of Directors

Officers:

Becky Rylander, *President*

Barbara Chalmers, *Vice President*

Lela Emery, *Treasurer*

Lucy Mueller, *Secretary*

Directors:

Sandy Alexander

Lois Gould

Gail Bosse

Patricia Halpin

Rosemary Gates

Volunteers Coordinator:

Lois Gould

Nominations:

Vacant

Emeritus:

Eileen Stiles

Jo Hill

Lois Gallup

Ron Garceau



Sunapee Post Office, 1926 - 1976