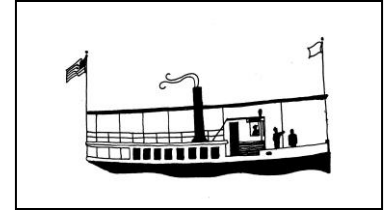


# Sunapee Echoes

Sunapee, New Hampshire Historical Society, Inc.  
P. O. Box 501, Sunapee, NH 03782  
sunapeehistoricalsociety.org  
e-mail: sunapeehistory@gmail.com  
603-763-9872  
Spring 2020



## WHAT'S HAPPENING?

In a word or two...not much, at least not at the Museum or Sunapee Archives. But our Board of Directors is busy contemplating what we may be able to do or how we might do things differently this summer.

**Our Museum.** Normally the museum would open on Memorial Day weekend. That won't happen, but perhaps we can take some steps that will allow us to open once we get the green light. If everyone wears a mask, only a few people come in at once, we establish a one-way traffic flow and maintain distances, etc., we might be OK. Most (all?) of our trusty docents—and most of us, too—are in the high-risk category, however, and we will be reluctant to put them in harm's way. So, we'll be sprucing up the place for the summer to be prepared and may mount a series of displays just inside the big glass doors so they can be seen from outside. **To our docents:** please know that although we will be eager to open the museum, we will not ask you to be there if you are not comfortable doing so.

**History Cruises.** We have scheduled this year's cruises, covering the Sunapee shore from Burkehaven to Gardner Bay, for 29 June and 10 August with 17 August as a backup date in case the June cruise is a no-go. Even then, however, we may have to make some adjustments such as reduced capacity, face masks, etc. We have begun taking reservations and would be glad to receive your check (\$35 per person) to save you a place on a first come, first served basis. We are planning to hold your checks until we are sure the cruises will run and will return

them if we need to cancel those events.

**Programs.** We have scheduled an interesting collection of programs for your edification and enjoyment, but doubt that we will be able to host you in the tight space we have at the museum. We are exploring other ways to get the information to you (YouTube videos?), and will let you know. Meanwhile, the schedule is included here. Just be sure to check our website regularly for updates.

**Sunapee Archives.** Burpee Hill Construction is poised to begin work on our new HVAC system and associated projects as soon as they are able to get back to work. We hope and trust that will happen before snow flies in the fall!

A big thank you to all who have already renewed their memberships and/or made generous donations. We appreciate your support! This year it is especially important for us to hear from you since we are not likely to see as many people at the museum as usual.

A few weeks ago, we were delighted to find a gift that someone had left for us outside Sunapee Archives. We have left it in place so it may brighten the day of anyone else who spots it. And we've found another at the Museum. What were they? See page 4 to find out! Thanks to the good fairies!

I hope you're finding some peace in our forced isolation and are staying healthy!

### *Thanks for donated artifacts!*



We are always delighted when we receive items for our collection and are tremendously honored when Sunapee treasures, whether old photos or other artifacts, are entrusted to us for care and safe-keeping and the enjoyment of our visitors.

This dress, in lovely rich purple silk, was worn by Susan Johnson in the fall of 1868 when she wed Albert B. Stocker. It came to us thanks to Susan's great grandchildren, John MacLean and his sister, Nancy MacLean Carey.

One of the projects, soon to be undertaken at the Archives, will be the construction of a display case to protect and show off this garment. The gown will be featured in our program with Costume Curator Astrida Schaeffer on August 20<sup>th</sup> (Covid 19 permitting).

## *Did you know...?*

We bet you're wondering how Sunapee fared during the Spanish flu epidemic. Here's what we know:

One hundred years ago, Sunapee's health officer reported on infectious diseases in town in each annual town report. From 1917 through 1919, those diseases included scarlet fever, measles, and diphtheria, all of which were held in check by quarantine and fumigation. The Spanish Flu showed up in the fall of 1918. Here's what Albert Felch, health officer, had to say about it:

*Next came the Spanish influenza and the town well knows its history and the discomfort which it has brought to our town including sickness and expense and, in a few homes, death. ... New Hampshire alone has recorded nearly three thousand deaths, and the end is not yet. Let us hope that some serum may be discovered that will combat the disease, that we may feel safe and free from its ravages. Until that time, we should all be cautious, careful and prudent. Sunapee thus far has been exceedingly fortunate compared with other towns and cities in the state but we will not be satisfied until it is driven from our town.*

*Your Health Officer is in close touch with state authorities and will do all in his power with information in hand to protect your homes. I thank the town's people for the good spirit shown through the long weeks of quarantine and if any sickness or deaths have been prevented, it is to your credit.*

By searching the town's vital records and in Ancestry.com, I've found at least 5 deaths from influenza in Sunapee in 1918, most from pneumonia following flu. One was a young woman—a nurse—who had been in town only two weeks. Her cause of death was listed as acute Bright's disease (kidney disease or nephritis) contributed to by influenza. Another was 25-year-old Leland Batchelder, who left a wife and young child. A third was Mabel Leone (wife of Huston Leone and mother of Ralph, Charles, and Edith) who brought the disease back with her after visiting in New York.

This ad for patent medicine appeared in local newspapers in 1918. Active ingredients included acetophenetidin, cascara sagrada (a laxative), quinine sulfate, aloin, aspirin, and ephedrine sulfate.

Across New Hampshire, at least 2700 people died. Then as now, the epidemic was much more brutal in Manchester than here. In a column written in 2008 and reprinted recently in the *Manchester Union Leader*, John Clayton, executive director of the Manchester Historic Association, reported that by the time the paper ran its first article on arrival of the virus in NH on Sept 16, 1918, one person had already died. He was soon joined by his wife and her sister. Schools, theaters, and libraries were closed, but the dying continued into January 2019.

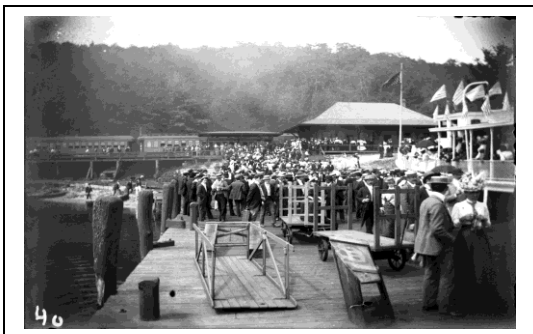
Does all this sound all too familiar?

**Spanish Influenza can  
be prevented easier than  
it can be cured.**

**At the first sign of a  
shiver or sneeze, take**

**HILL'S  
CASCARA  
-BROMIDE-  
QUININE**

**Standard cold remedy for 20 years—in tablet  
form—safe, sure, no opiates—breaks up a cold  
in 24 hours—relieves grip in 3 days. Money  
back if it fails. The genuine box has a Red top  
with Mr. Hill's picture. At All Drug Stores.**



**All Aboard!** Scenes like this were once common on our lake shore. This one shows the volume of visitors who came and went by train. They transferred here at Lake Station to get to their hotels by steamboat. The train was important to the economic growth of this region and changed life considerably for the residents. The coming of the train will be the subject of our program on July 23<sup>rd</sup>—one of the MUSE series of exhibits and programs and supported by NH Humanities.

We are saddened by the passing of our friend, Dot Valli. Dot and her husband were long-time summer residents of Granliden, having purchased one of the stand-alone “cottages” in 1970. Over the years, Dot generously donated Sunapee memorabilia to SHS, helped as docent, attended many programs, and was always interested in how our historical society was progressing.

When you use their services, please thank these businesses for their support:

Barton Insurance Agency

Dunnell’s Plumbing & Heating

Lake Sunapee Insurance Agency



SUNAPEE  
★CRUISES★

And when ordering from Amazon, please use the smile.amazon.com website and list the Sunapee, NH Historical Society as your chosen charity. Thanks!



---

### 2020 MEMBERSHIP – RENEWALS – CONTRIBUTIONS

NAME: \_\_\_\_\_

MAILING ADDRESS: \_\_\_\_\_

TOWN, STATE, ZIP: \_\_\_\_\_

PHONE: \_\_\_\_\_ E-MAIL: \_\_\_\_\_

#### CHECK MEMBERSHIP TYPE:

\$15 Individual     \$25 Family     \$50 Business     \$100 Patron     \$300 Sustainer

#### CONTRIBUTIONS:

Donation \$ \_\_\_\_\_     I wish to remain anonymous

#### NEWSLETTER

- Send future newsletters by e-mail
- Send future newsletters by postal mail

#### Please make checks payable to:

Sunapee Historical Society, Inc.  
P.O. Box 501  
Sunapee, NH 03782

SHS is a 501(c)3 organization  
02-0338273

Thank you!

Contributions of **time and talent** are also welcome. Please let us know if you’d like to tackle any of these jobs:

Docent at the museum: Welcome visitors from around the world. Training provided; three-hour stints.

Programming

Transcribing diaries and other documents

Organizing/providing refreshments for programs

Gardening and/or lawn care

Research

Publicity

Building maintenance

Housekeeping

Fund raising

Acquisitions: policy and cataloging

Scanning

Organizing digital files

Writing articles

Recording oral histories

Planning and mounting displays

***Sunapee Echoes***

Sunapee Historical Society  
PO Box 501  
Sunapee, NH 03782

---

***2019-2020 Board of Directors***

*Officers:*

Becky Rylander, *President*  
Barbara Chalmers, *Vice President*  
Lela Emery, *Treasurer*  
Lucy Mueller, *Secretary*

*Directors:*

Sandy Alexander  
Lois Gould  
Gail Bosse  
Patricia Halpin  
Rosemary Gates

*Volunteers Coordinator:*

Lois Gould

*Nominations:*

Vacant

*Emeritus:*

Eileen Stiles  
Jo Hill  
Lois Gallup  
Ron Garceau

