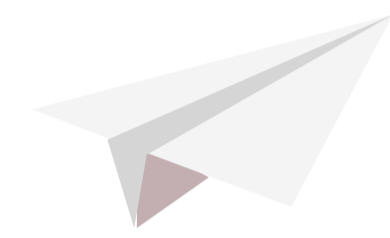


# Investing in Structural Learning

This guideline contains the primary ways of investing in our products and services. As with all new educational concepts, we encourage schools to consider professional learning for their staff and have a range of strategic options to consider.

## Individual School R&D Projects



### Excited

FOR TEACHERS WHO WANT TO INVEST IN THE CLASSROOM KITS AND JUST GET GOING!

From **£99**

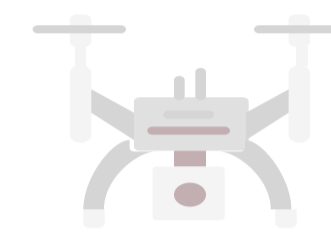
[E.g. One small kit]



A versatile classroom kit of Structural Learning bricks and mini whiteboards

Resources to help you plan for critical and creative thinking

[Visit our Store](#)



### Onboard

FOR SCHOOLS THAT WANT TO INVEST IN THE NECESSARY CLASSROOM SUPPORT AND PROFESSIONAL LEARNING TO GET THE MOST OUT OF STRUCTURAL LEARNING.

From **£699**

[E.g. One twilight session and two large classroom kits]



A twilight CPD session for your staff to demonstrate the principles of Structural Learning

At least two large classroom kits of Structural Learning

[Enquire](#)

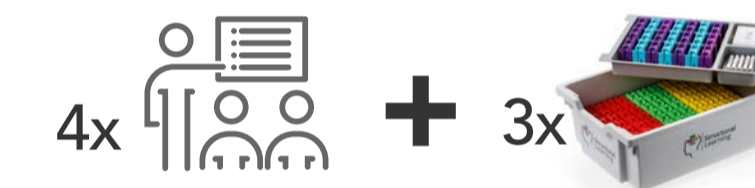


### Research Engaged

FOR SCHOOLS THAT WANT TO EMBRACE THE LATEST COGNITIVE SCIENCE AND ENGAGE THEIR STAFF IN R&D PROFESSIONAL LEARNING ACTIVITIES.

From **£1797**

[E.g. Four Twilight sessions and three large classroom kits]



Your staff conduct their own supported enquiry project focusing on student need and research evidence

The school puts the cognitive performance of their learners under the microscope

[Enquire](#)

## Pricing Details for building your project

### Hardware:

#### Small classroom kit

Perfect for one to one and small group work

**£99**



#### Large classroom kit

For a class of 30 you will need two boxes (these can be shared across the school)

**£199**



\*SIGNIFICANT DISCOUNTS FOR BULK PURCHASING 4+ KITS AND MULTIPLE DAYS PROFESSIONAL DEVELOPMENT SUPPORT - CONTACT US FOR A QUOTE.

### Professional Development:

#### Twilight Staff Meeting

Give your staff some expert guidance.

**£300**

#### Classroom Support Day and Twilight Meeting

Strategic team teaching days focusing on a particular area such as literacy or STEM.

**£525**

#### Staff Research Journals

Guided Action Research materials

**£20**