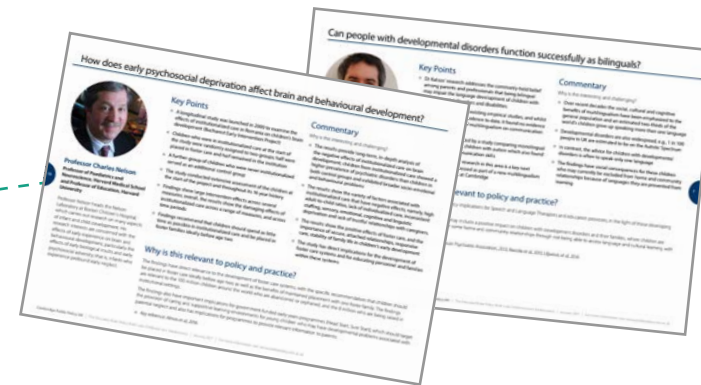


What's in the Structural Learning Innovation Program?

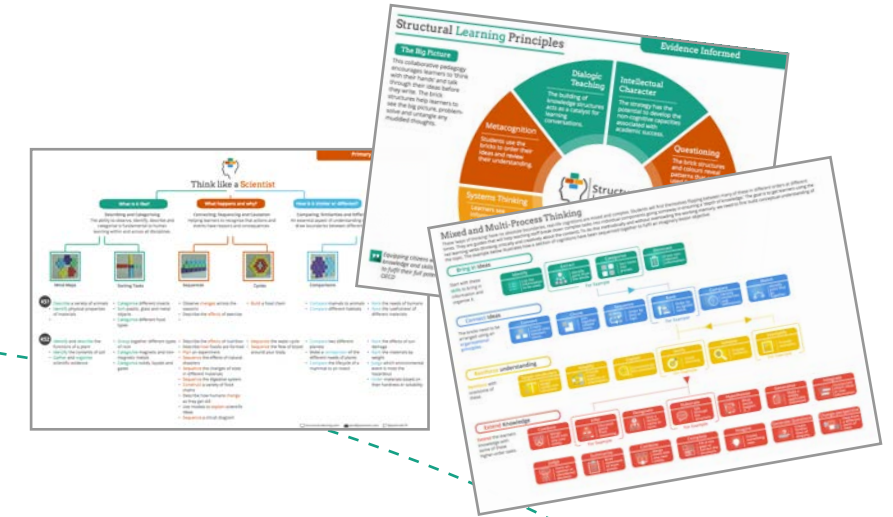
The Structural Learning Innovation program is the development of new evidence informed pedagogies using the new classroom bricks. Staff are supported in the creation and measurement of these new strategies. Underpinned by psychological theory, this professional development program aims to achieve a deeper understanding of the process and mechanisms that underlie learning with the goal of improving educational practice and learning outcomes.



Research Journals for Participants
This step-by-step research framework walks teachers through a simple methodology. [Click here](#) to view a copy.



Access to Educational Research
We have compiled an organised collection of research articles to support participants projects.



Curriculum Materials
We have produced some easy-to-follow planning and implementation resources. These include subject-based overviews and presentations.



Structural Learning Classroom Kits
The reusable kits consist of bricks and whiteboards.



Professional Development Sessions
These workshops can be twilight meetings and usually last no longer than 1.5 hours. The sessions are used for exploring the latest cognitive research and supporting staff with their research. We would recommend a regular contact of once every half-term.



If you are interested in either **commissioning** or **hosting** a project, please contact Paul Main on paul@paulmain.com.