

Factory

Chris van Uffelen

Design

BRAUN



↑ | East façade, social building
→ | Interior volume entrance

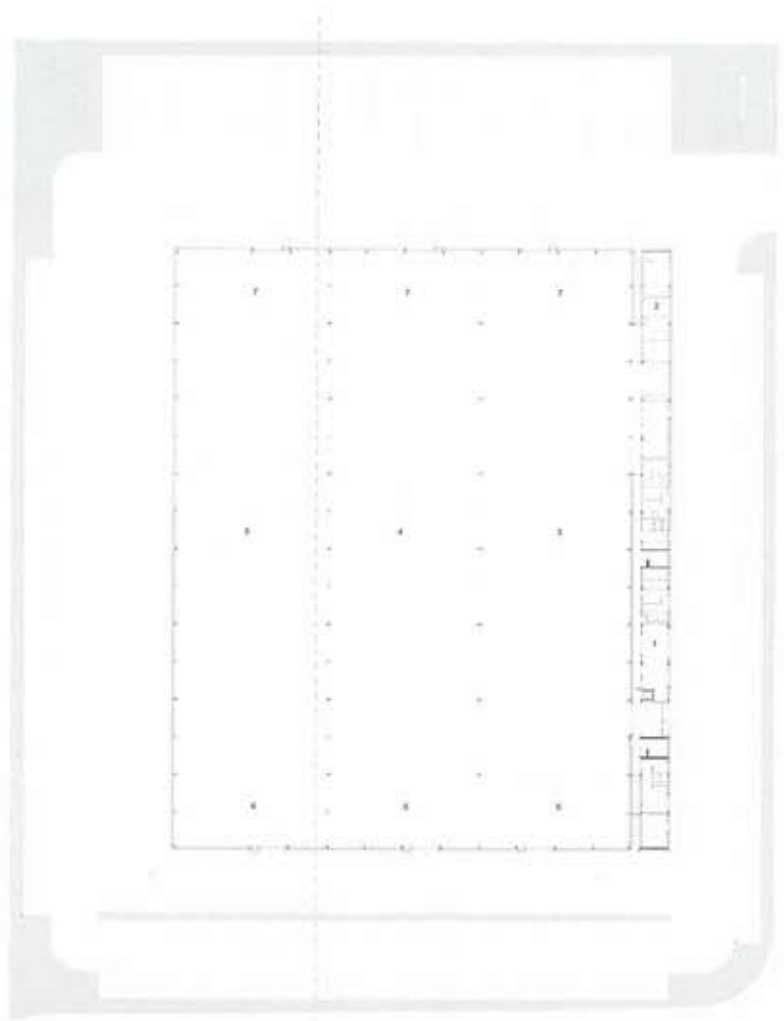
Inapal Metal Industrial Unit

Palmela

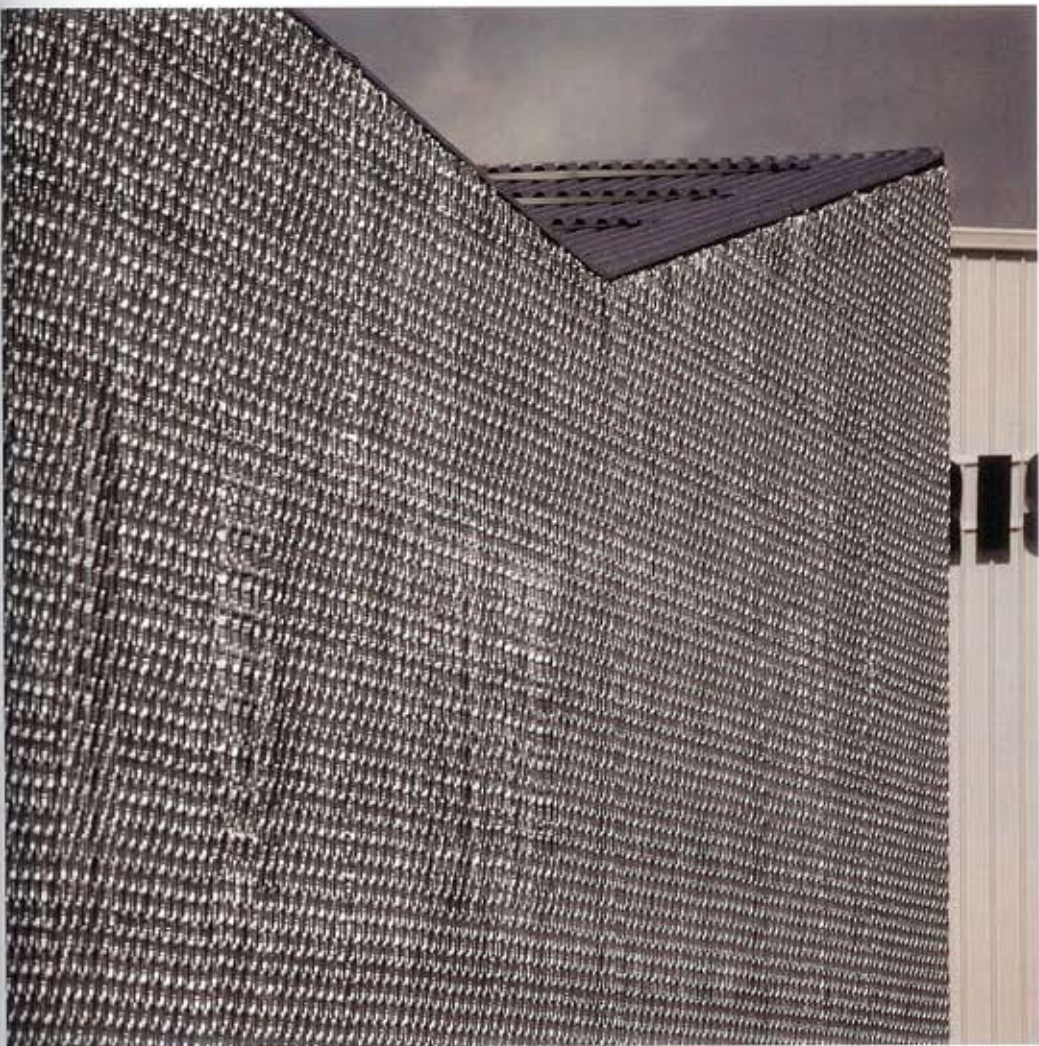
The industrial unit is dedicated to the production of metal components for the automobile industry and is composed of two apparently autonomous volumes. One volume consists of two wings and a huge cantilever that combine raw material storage and different sections of production and delivery; while the other consists of two floors where the technical and social areas are arranged. The research is focused on the "skin" of the building. One unique surface material – trapezoidal metal cladding – furnishes and unifies all the project solutions: revetments sheets when a closed space is required; metal-sheet cut in slices and fixed like honey-comb when is essential to shade, illuminate or ventilate.

Address: Parque Industrial da Auto-Europa, Lote 2, Quinta do Anjo, 2950-678 Palmela, Portugal.
Client: Inapal Metal S.A. **Completion:** 2006. **Gross floor area:** 12,418 m². **Number of workplaces:** 30.
Main construction: steel framework (industrial plant) and concrete (social building). **Roof:** trapezoidal metal-cladding and plain metal-sheet. **Lighting:** fluorescent. **Main materials:** trapezoidal metal-cladding. **Setting:** industrial.





↑ | Social building, entrance lobby
← | Industrial unit site plan



← | Metal-cladding detail
↓ | Industrial unit, north-west view, cantilever

