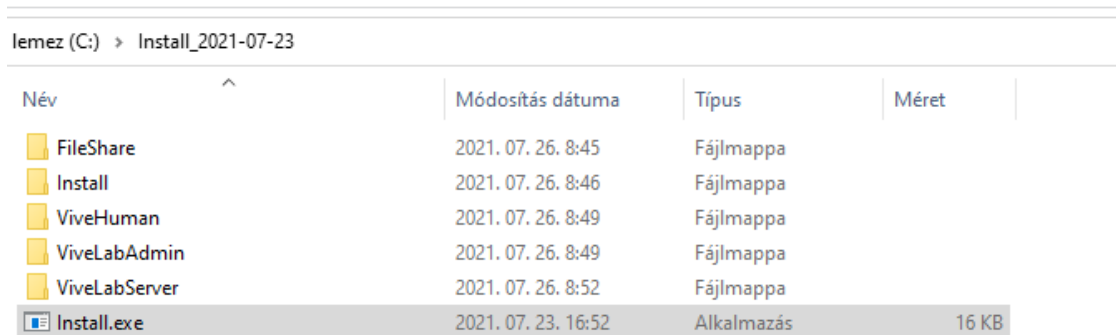


# Installation guide

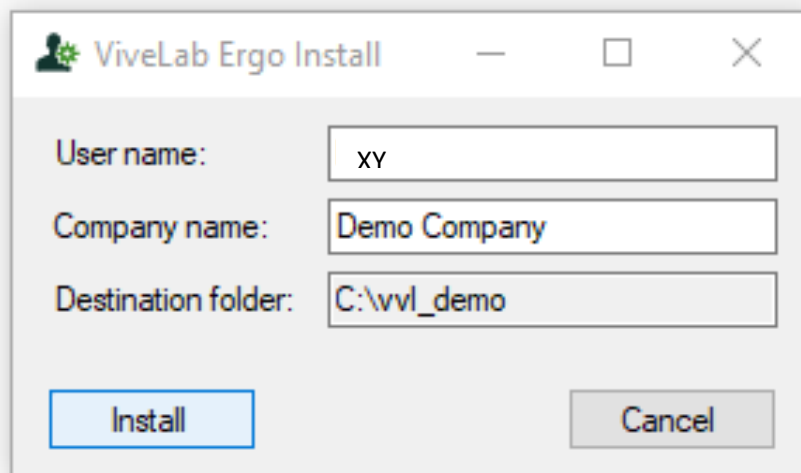
1. Download the installation package, extract it to an empty folder!



lemez (C:) > Install\_2021-07-23

Név	Módosítás dátuma	Típus	Méret
FileShare	2021. 07. 26. 8:45	Fájlmappa	
Install	2021. 07. 26. 8:46	Fájlmappa	
ViveHuman	2021. 07. 26. 8:49	Fájlmappa	
ViveLabAdmin	2021. 07. 26. 8:49	Fájlmappa	
ViveLabServer	2021. 07. 26. 8:52	Fájlmappa	
Install.exe	2021. 07. 23. 16:52	Alkalmazás	16 KB

2. Start **Install.exe**! Fill in the user name, the company name and define a destination folder for the installation. Choose **Install**!



ViveLab Ergo Install

User name:

Company name:

Destination folder:

3. When a black window opens, the installation proceeds, when you see: „Press any key to continue...” follow the instruction! The installation is ready!

```
*****
* ViveLab Desktop Installation *
*****

ViveLab location: C:\vvl_demo
Company name:      Demo Companu
User name:         XY

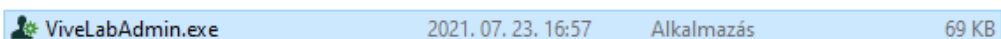
*****
* Installing ViveLab ... *
*****

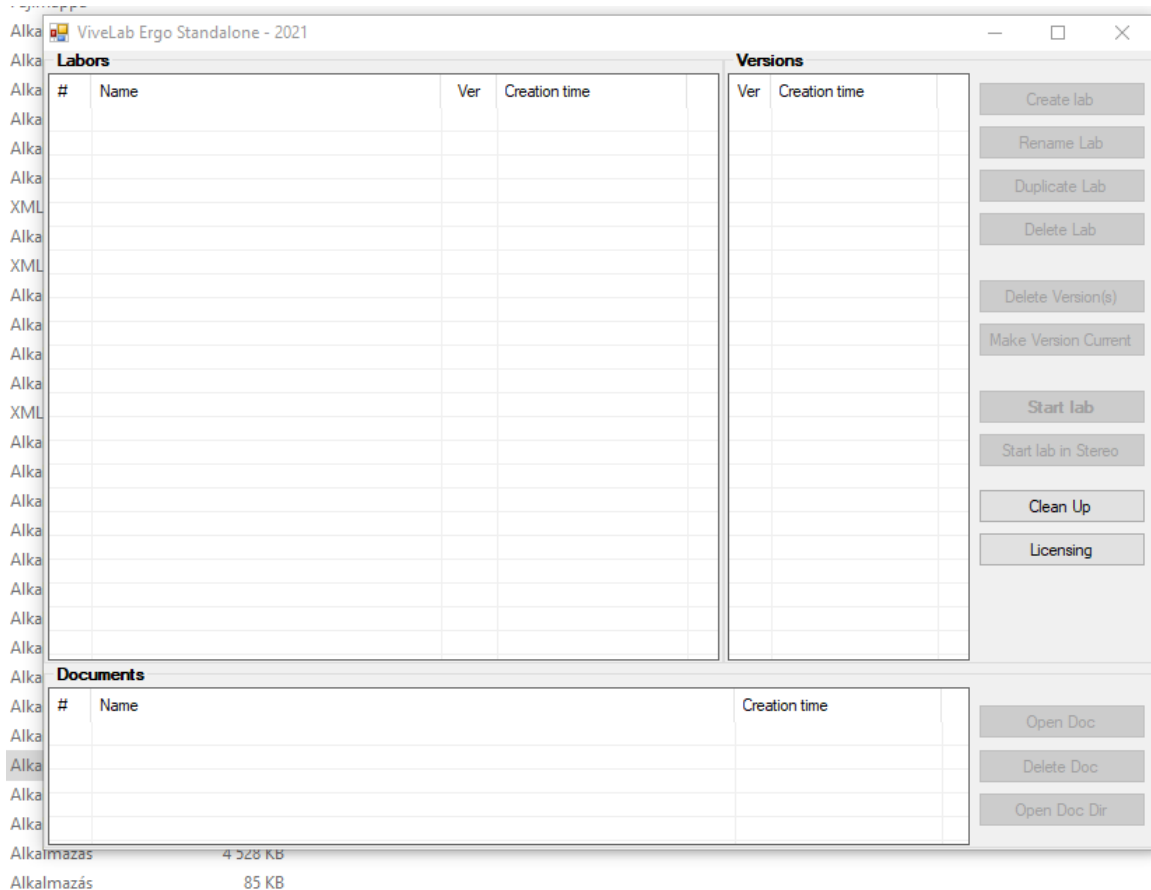
Installing necessary applications...
Creating folders...
Copying files...
Replacing variables in setting files...
Creating database...
Initialize tables...

*****
* ViveLab succesfully installed *
*****

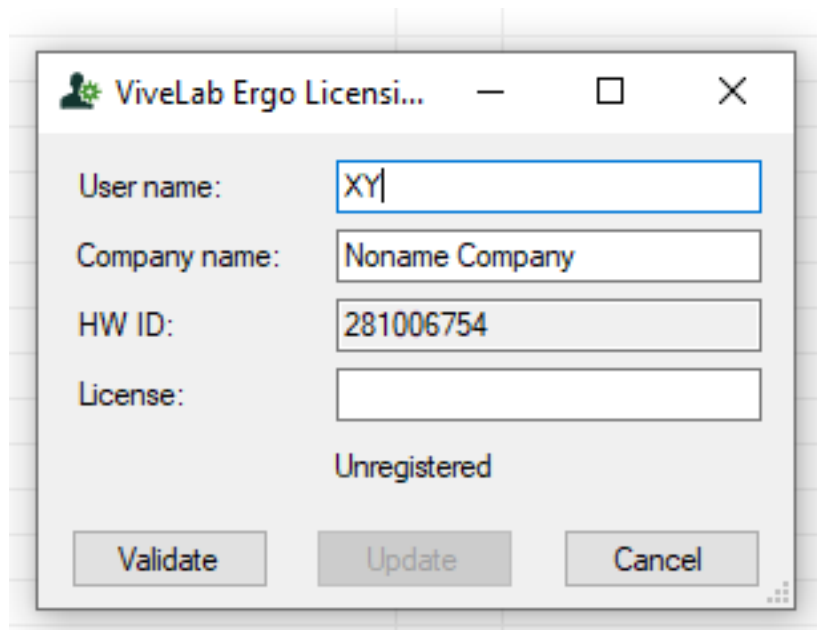
Press any key to continue . . .
```

4. The software starts with double-clicking ViveLabAdmin.exe, it opens a work window illustrated below!





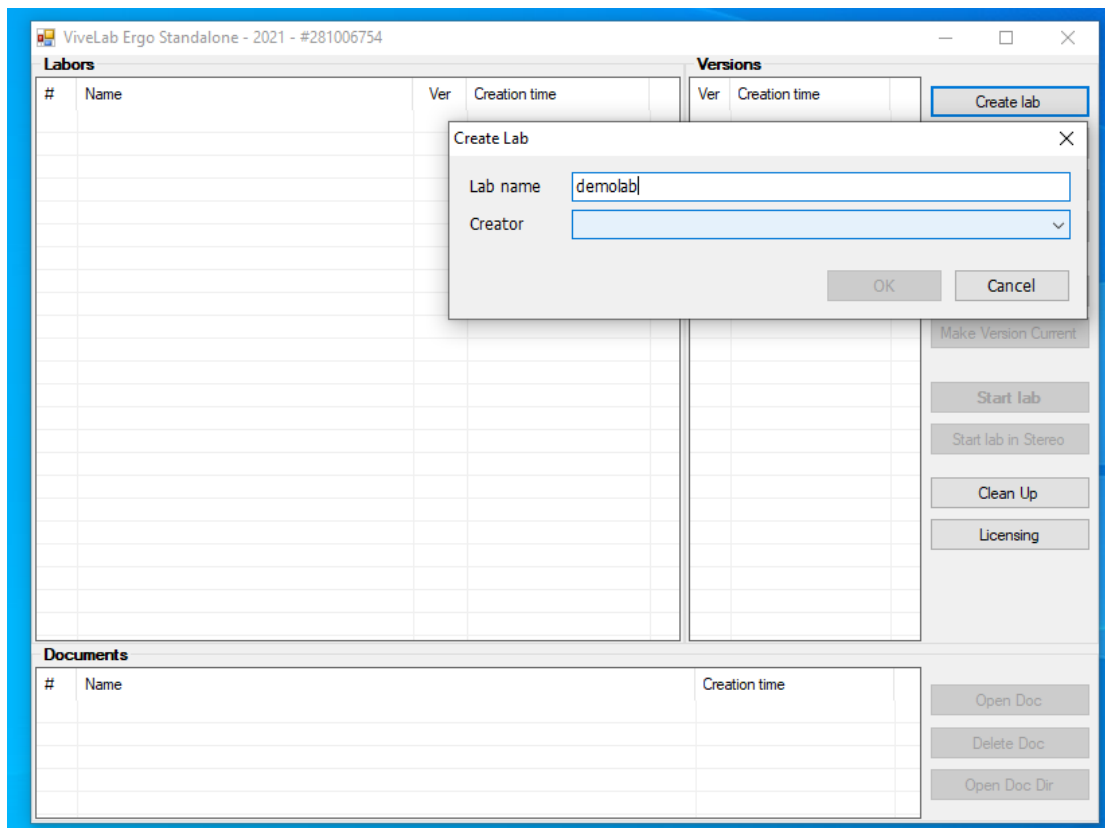
5. First click „Licensing” then a window appears! Copy HW ID and send it in an e-mail to [support@vivelabergo.com](mailto:support@vivelabergo.com)! When you get a license code please insert it, then validate and update! The program is ready for use!



# First steps in the ViveLab

After licensing the software you may create labs with the „Create Lab” function to start working with ViveLab.

After using Create Lab, name the lab and choose the person who created it!



Labs created can be renamed (Rename Lab), duplicated (Duplicate Lab) and deleted (Delete Lab). The labs created open by clicking Start Lab (in case of using a 3D projection wall Start Lab in stereo).

Generated documents can be opened (Open Doc), deleted (Delete Doc) or opened in the document directory where it is stored (Open Doc Dr).

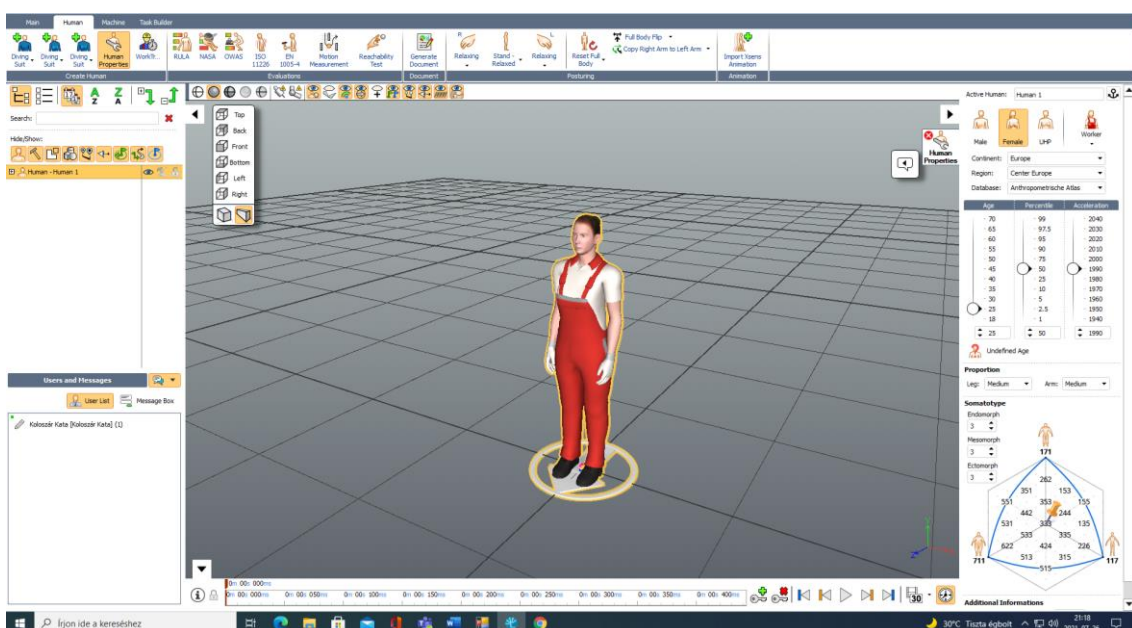
# Demo version vs. professional version

Please mind, that the demo version has limited functionalities compared to the professional desktop version.

ViveLab has four main menus. The Main menu contains menus of transformation, selection options, viewpoints, and a ruler. Using the professional desktop software, versions of the work can be saved in a dedicated folder which is not possible in the demo version.

In the Human menu, mannequins are created and adjusted for bodily dimensions and motions/postures. While the professional version allows the creation of numerous humans, the demo provides only one human figure for a scene. The analyses methods for the motions and postures can be selected in the Human menu. Usually, imported motion sequences of any length are usable, while in the demo version only the first 60 seconds part of the timeline is available for import and analysis. Therefore, documentation options are restricted as well. Statistical results are counted from the first 60 seconds, while single posture documentation is possible only for the 30th second of the motion. In the professional version, these factors are unlimited.

In the development phase, Task builder menu complex motions can be added to the animation. In the Machine menu the objects of the scene are created or imported. Please note, that in the desktop versions, collaboration options are invalid.



To understand the details of functions, please consult with the user guide from our website:

[https://uploads-ssl.webflow.com/5b473dd1a0fccf7e3ad8823e/5bc70fedba58380c3169bdc0\\_user\\_manual\\_vivelab\\_2018-1.pdf](https://uploads-ssl.webflow.com/5b473dd1a0fccf7e3ad8823e/5bc70fedba58380c3169bdc0_user_manual_vivelab_2018-1.pdf)

Or you may check the tutorials on our youtube channel:

<https://www.youtube.com/channel/UCc7wweTk3G28xyW3Az0Cegw>