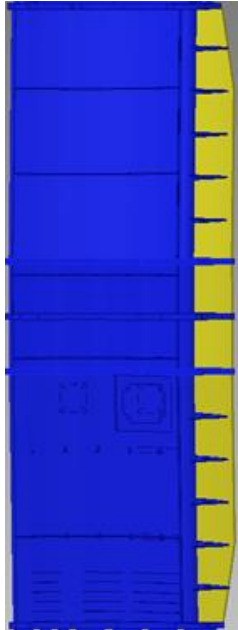


## Flottrollshlerar / Mid-water doors

Einn spoiler / One spoiler

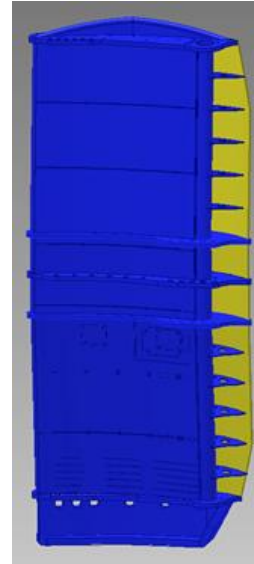
m <sup>2</sup>	Þyngd á lofti kg/stk / weight in air each
0.7	75 – 200
0.9	100 – 300
1.4	150 – 400
2.3	250 – 500
3.1	350 – 900
4.3	450 – 1100
4.5	450 – 1200
5.1	500 – 1300
6.3	600 – 1750
7.6	850 – 2250
9.0	1100 – 3500
10.0	1500 – 4000
11.0	1750 – 4500
12.5	2000 – 5000
14.5	3000 – 5500
16.5	3250 – 6500
18.5	3750 – 7000
21.0	5000 – 9000



## Miðsjávarhlerar / Semi-Pelagic doors

Einn spoiler / One spoiler

m <sup>2</sup>	Þyngd á lofti kg/stk / weight in air each
0.7	100 – 200
1.0	150 – 300
1.7	250 – 400
2.4	400 – 800
3.0	500 – 1100
3.5	550 – 1200
4.0	600 – 1250
4.8	750 – 1600
5.3	850 – 1800
5.9	900 – 2000
7.0	1200 – 3500
8.5	2000 – 4500
10.0	2500 – 5000
11.2	3000 – 5500
14.4	3250 – 6000
16.5	3750 – 8000
17.9	4000 – 9000
22.3	5000 – 10000



## Botnhlerar / Bottom - Semi Pelagic

Tveir spoilerar / Two spoilers

m <sup>2</sup>	Þyngd á lofti kg/stk / weight in air each
0.6	100 - 250
1.0	150 - 400
1.5	250 - 500
2.0	350 - 700
3.0	500 - 1100
3.3	550 - 1200
3.7	600 - 1300
4.5	700 - 1600
5.0	900 - 1800
5.5	950 - 2000
7.0	1200 - 3500
8.0	2000 - 4000
10.0	2500 - 5000
11.5	3000 - 6000
13.5	3500 - 6500
15.0	3750 - 7500
17.0	4000 - 9000
21.0	5000 - 10000

