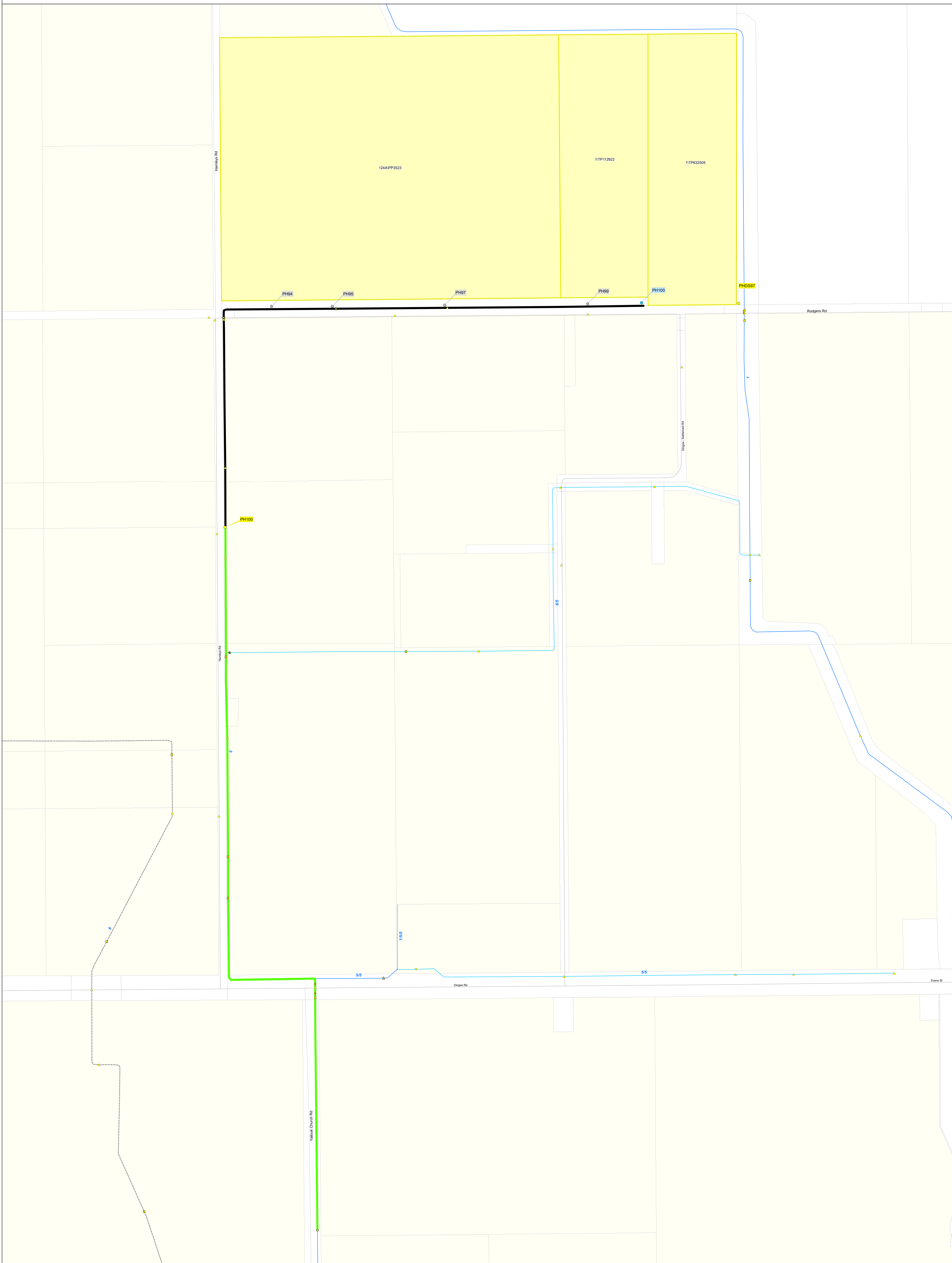
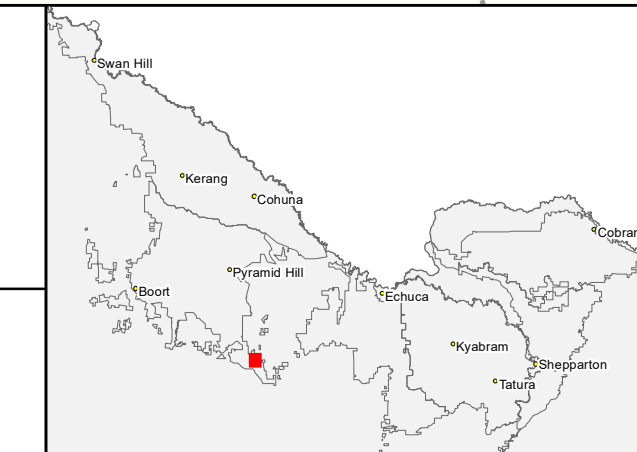


Reconfiguration Plan: LV16 RP 4



IR185583

 19 NOV 2018



Service Point Modernisation Action	Channel Modernisation Action	G-MW Irrigation Structures	Electrical Crossing	Offtake	Subway	Channel Network	Transport	Waterway
● Retain	— Retain channel with no modernisation	● Abandoned Structure	⌘ Farm Irrigation Crossing	◆ Outfall	■ Subway	— Backbone Channel	— Freeway	— Waterway
● Relocate	— Retain channel with remediation	◆ Bridge	● Flume	◆ Pump Station	▼ Syphon	— Non-Backbone Channel	— Highway	■ Lake
● Replace	— Retain channel with modernisation	▲ Culvert	■ Footbridge	■ Regulator	⌘ Valve - Isolation	--- Decommissioned Channel	— Major Road	■ DCRP Customer Parcels
○ Rationalise	— Pipeline	● Drainage Inlet	■ Monitoring Station	★ Regulator Combine	■ Weir	⋯ Pipeline	— Semi-Major Road	■ Other Customer Properties
● Relocation Point	— Decommission channel					⋯ Proposed Pipeline	— Minor Road	■ Property/Land Not Serviced

SCALE AT A0 1:2,790

 0 0.05 0.1 0.2 km

The content of this product is provided for information purposes only. No claim is made as to the accuracy or authenticity of the content of the product. In no event will G-MW, its agents, instrumentalities and employees be liable for the accuracy of the information contained within this product nor its use of reliance placed on it. The information used within this product is provided on the basis that all persons accessing the information undertake responsibility for assessing the relevance and accuracy of its content.