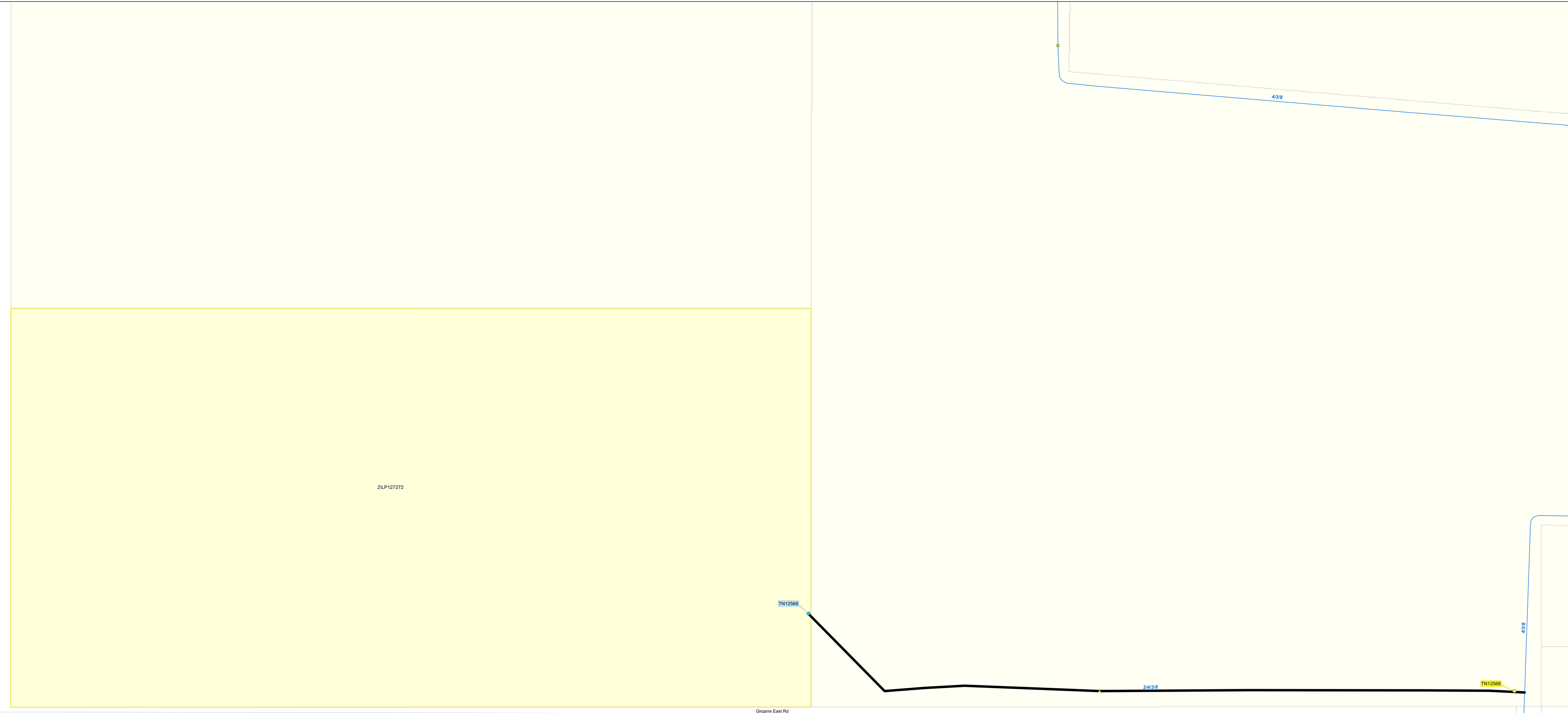


Reconfiguration Plan : CG14 RP 2



Poon Rd

2LP127272

TN12566

Girgarre East Rd

2/4/3/8

TN12566

4/3/8

4/3/8

Goulburn-Murray Water
IR185583
18 OCT 2017
 GOULBURN-MURRAY WATER
 40 CASEY STREET (PO BOX 165)
 TATURA VIC 3616
 Ph (03) 5833 5500 Fax (03) 58245827
 gmsupport@gmwater.com.au

Service Point Modernisation Action <ul style="list-style-type: none"> Retain Relocate Replace Rationalise Relocation Point 	Channel Modernisation Action <ul style="list-style-type: none"> Retain channel with no modernisation Retain channel with remediation Retain channel with modernisation Pipeline Decommission channel 	G-MW Irrigation Structures <ul style="list-style-type: none"> Abandoned Structure Bridge Culvert Drainage Inlet 	<ul style="list-style-type: none"> Electrical Crossing Farm Irrigation Crossing Flume Footbridge Monitoring Station 	<ul style="list-style-type: none"> Offtake Outfall Pump Station Regulator Regulator Combine 	<ul style="list-style-type: none"> Subway Syphon Valve - Isolation Weir 	Channel Network <ul style="list-style-type: none"> Backbone Channel Non- Backbone Channel Decommissioned Channel Pipeline 	Transport <ul style="list-style-type: none"> Freeway Highway Major Road Semi-Major Road Minor Road 	<ul style="list-style-type: none"> Waterway Reservoir Lake 	<ul style="list-style-type: none"> DCRP Customer Parcels Other Customer Properties Property/Land Not Serviced
---	---	---	--	--	---	---	---	---	--

SCALE AT A0 1:1,390

0 0.035 0.07 0.14 km

The content of this product is provided for information purposes only. No claim is made as to the accuracy of authenticity of the content of the product. In no event will G-MW, its agents, instrumentalities and employees be liable for the accuracy of the information contained within this product nor its use of reliance placed on it. The information used within this product is provided on the basis that all persons accessing the information undertake responsibility for assessing the relevance and accuracy of its content.

All Proposed Works to be Completed By: / /