

SMART CLASSROOM

ECO-FRIENDLY LEARNING ENVIRONMENTS FOR A NEW GENERATION



Customizable

Relocatable

Factory Direct

Cooperative Purchasing Available



modernbuildingsystems.com/smartclassroom

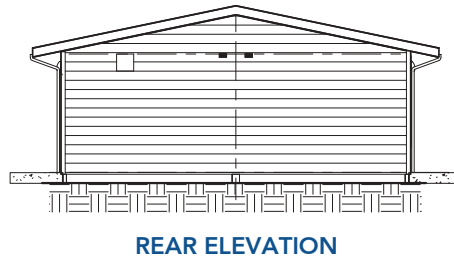
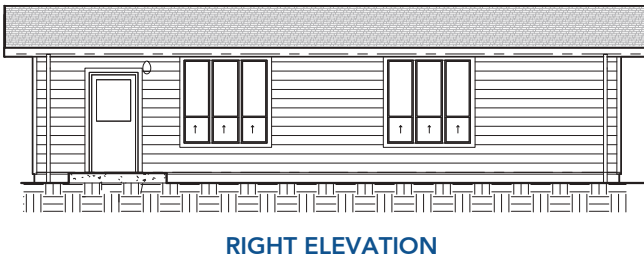
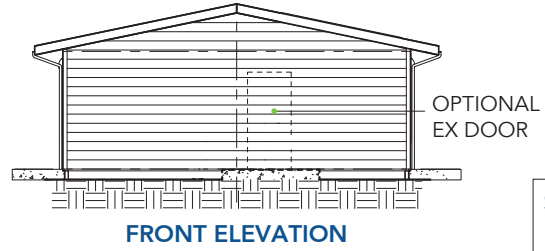
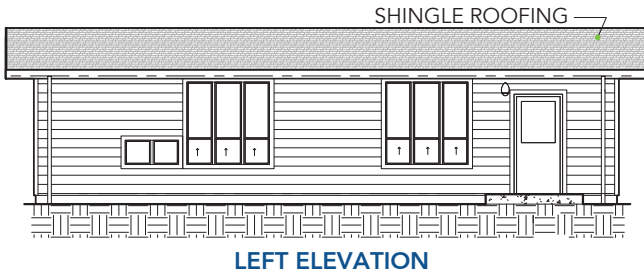


800-682-1422



sales@modernbuildingsystems.com

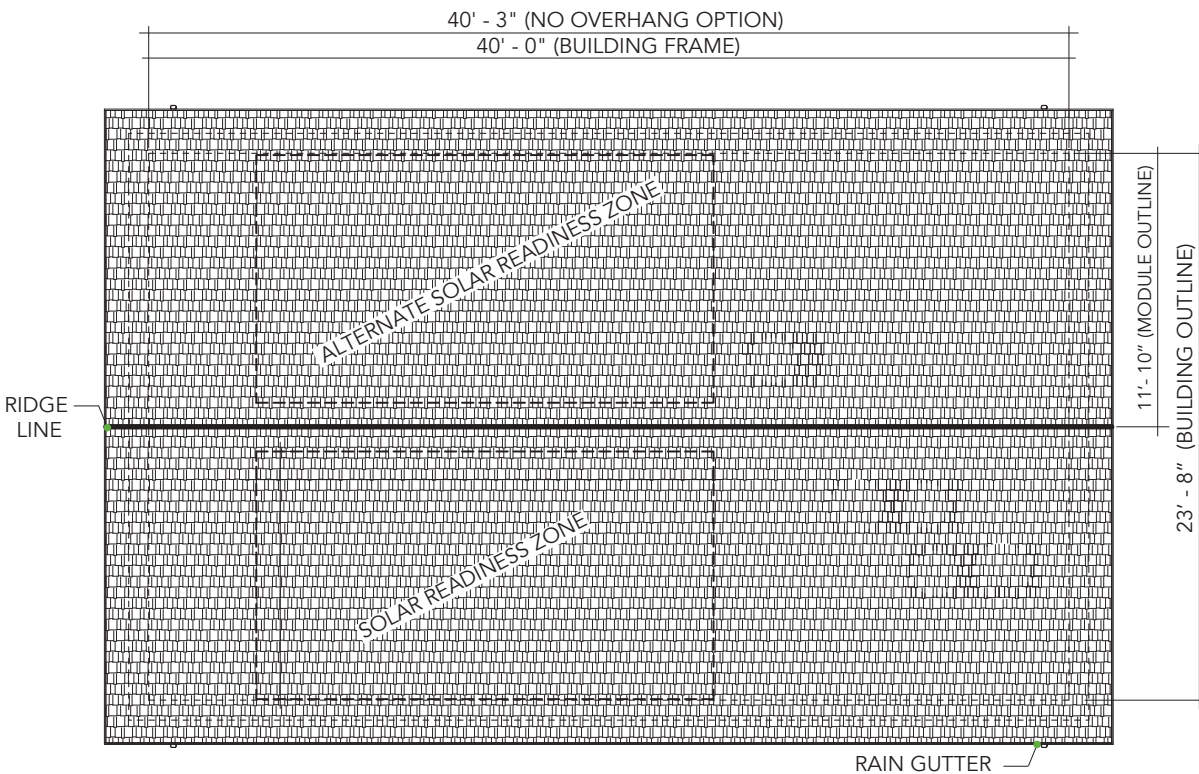
EXTERIOR ELEVATION AND SIDING (BASE MODEL)



SIDING OPTIONS

- FIBER CEMENT REVEAL SYSTEM
- HORIZONTAL FIBER CEMENT LAP SIDING (SHOWN)
- VERTICAL GROVE T-111

ROOFING (BASE MODEL)



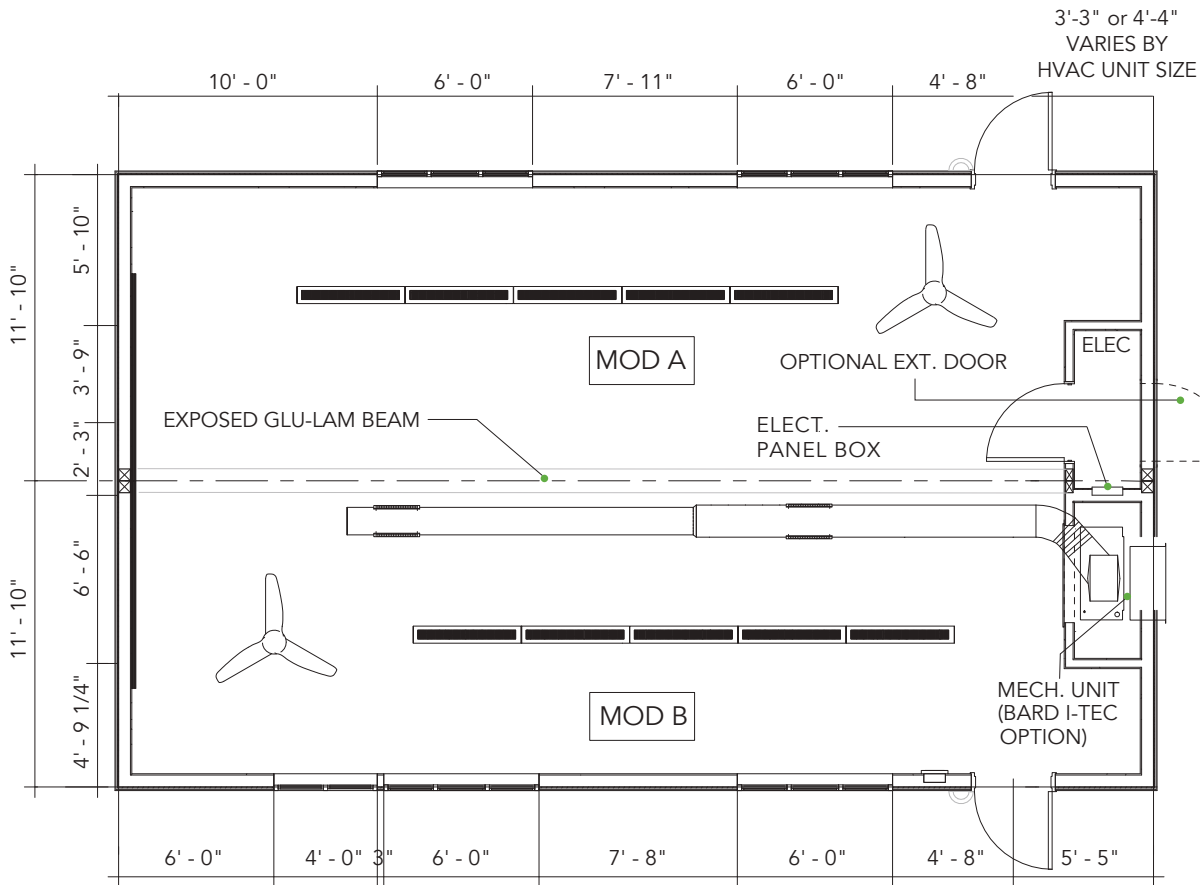
ROOFING OPTIONS

- METAL
- 30 YEARR COMPOSITE SHINGLE (BASE/SHOWN)

OVERHANG OPTIONS

- NONE (BASE)
- 12"
- 24" (SHOWN)

FLOOR PLAN (BASE MODEL)



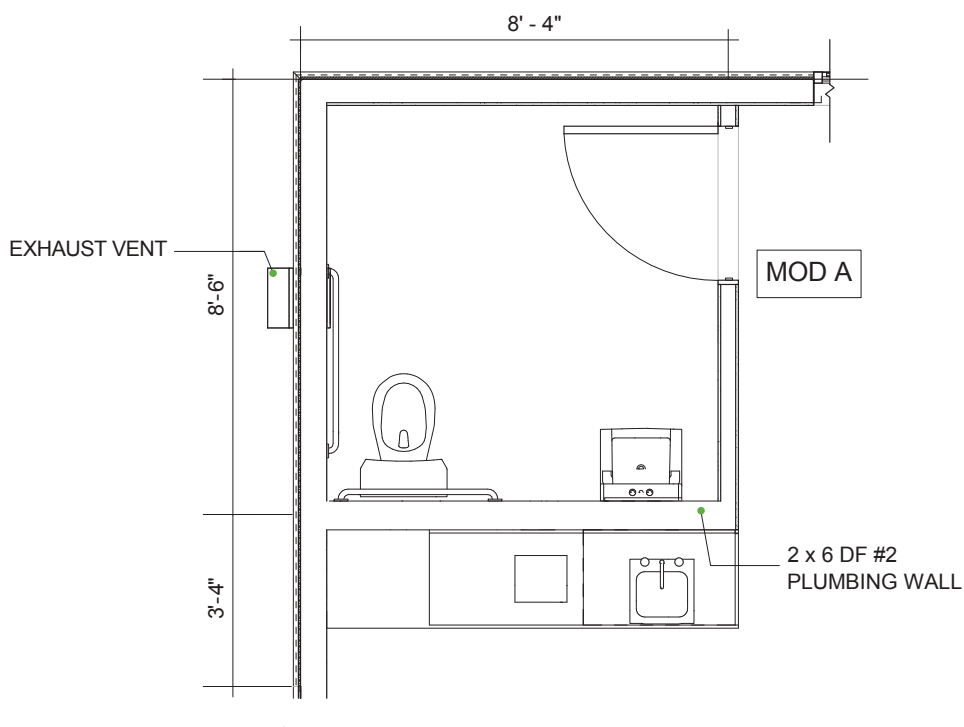
FLOOR PLAN OPTIONS

- NO PLUMBING (BASE/SHOWN)
- PLUMBING

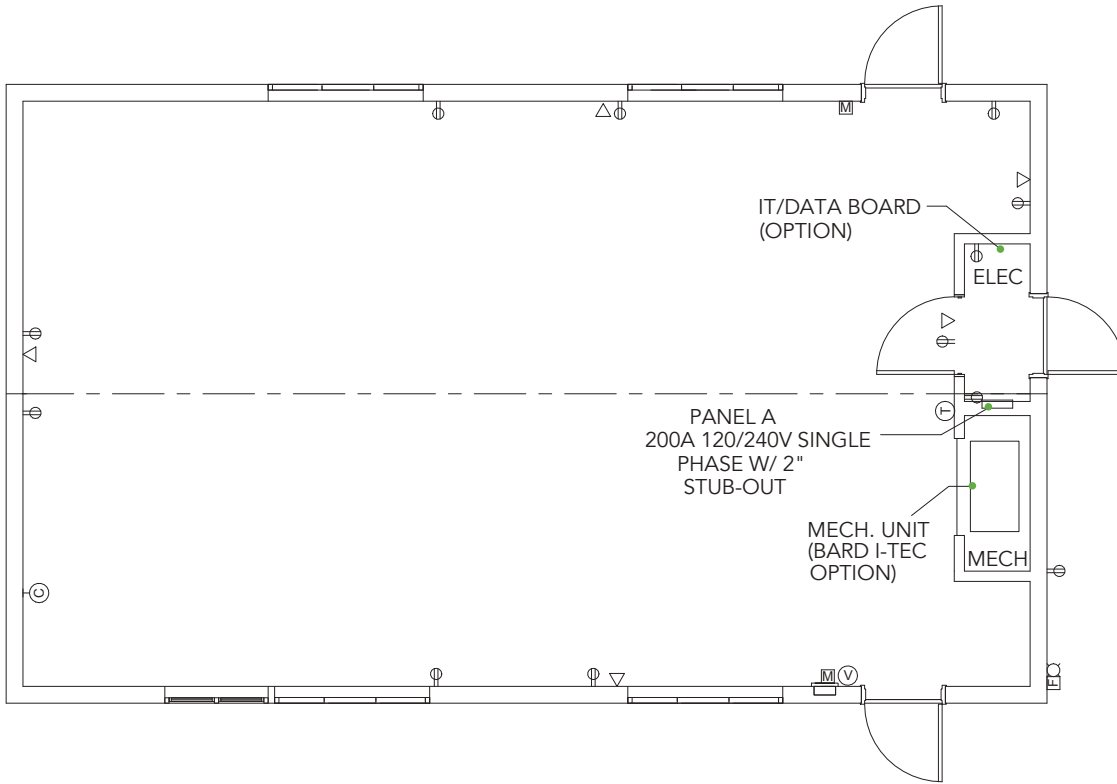
MECH. SYST. OPTIONS

- BARD I-TECH STAND ALONE (SHOWN)
- BARD Q-TECH STAND ALONE (BASE)
- LG SPLIT
- AMANA SPLIT
- BARD WALL HUNG

RESTROOM (OPTION)



ELECTRICAL PLAN (BASE MODEL)



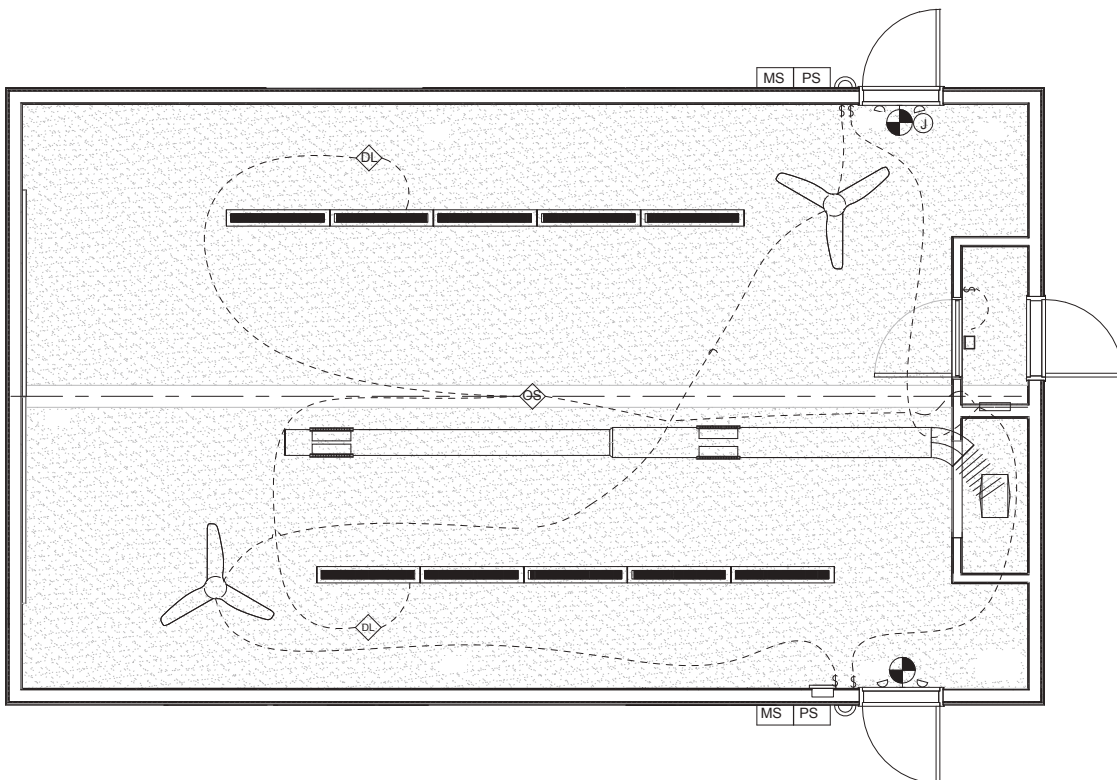
LIGHTING OPTIONS

- 200A PANEL (BASE)

CONNECTED	CALCULATED
30134 VA	31278 VA
126A	130A

- ⊕ AUD. / VIS. FIRE ALARM
- Ⓜ MANUAL PULL STATION
- ▽ DATA/PHONE BOX
- Ⓢ CLOCK RECEPTACLE
- Ⓥ VISUAL ALARM
- Ⓢ RECEPTACLE
- Ⓢ THERMOSTAT
- Ⓢ GYPSUM BOARD CEILING
- Ⓢ AUTOMATIC DAYLIGHT SENSING CONTROL
- Ⓢ MOTION SENSOR PACK
- Ⓢ PHOTO SENSOR PACK
- Ⓢ JUNCTION BOX
- Ⓢ OCCUPANCY SENSOR
- Ⓢ SWITCH
- Ⓢ EXIT SIGN & EMERGENCY LIGHTING

MECHANICAL & LIGHTING PLAN (BASE MODEL)



MECH. SYST. OPTIONS

- BARD I-TECH STAND ALONE (SHOWN)
- BARD Q-TECH STAND ALONE (BASE)
- LG SPLIT
- AMANA SPLIT
- BARD WALL HUNG

LIGHTING OPTIONS

- 383 WATTS TOTAL LIGHTING (BASE)

FINISH OPTIONS

FINISH SCHEDULE

- DRY (NO PLUMBING - BASE)
- WET (W/ PLUMBING - OPTIONAL)

INTERIOR WALL FINISH

- PLATE HEIGHT: VAULTED CEILING TO ROOF (BASE)
- 5/8" VINYL COATED [V.C.]. GYPSUM BOARD (BASE)
- 5/8" GYPSUM BOARD WITH TAPE, TEXTURE & PAINT (OPTIONAL)
- SUBSTITUTE ACOUSTIC AND/OR FIREWALL (OPTIONAL)

ROOFING FINISH

ROOF INSULATION: R-30 (CELLULOSE) W/ FS-25

- SHINGLE: FIBERGLASS COMP. SHINGLES OVER (BASE)
- METAL: 24 GA. STANDING SEAM METAL OVER (OPTIONAL)

ROOF OVERHANG:

- OVERHANG: NONE (BASE)
- OVERHANG: 24" (OPTIONAL)
- OVERHANG: 12" (OPTIONAL)

FLOOR FINISH

- CARPET TILE
- LUXURY VINYL TILE (LVT)
- VINYL COMPOSITION TILE (VCT)

DOOR SCHEDULE

- METAL/ DUAL / LOW E / ARGON / TMP

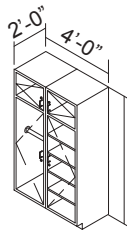
WINDOW SCHEDULE

- VINYL
- MILL FINISH ALUMINIUM

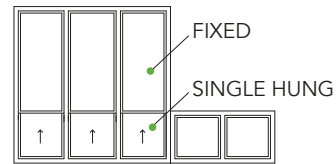
ACCESSORIES

- WITH RAMPS
- WITHOUT RAMPS
- WET (w/ plumbing)
 - RESTROOM
 - BUBBLER FOUNTAIN
 - HAND / BAR SINK
 - FIRE SPRINKLER SYSTEM

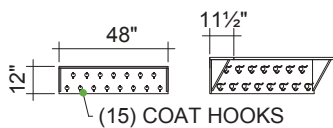
ADD-ON OPTIONS



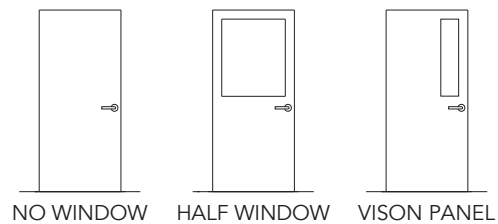
ADD TEACHER CABINET



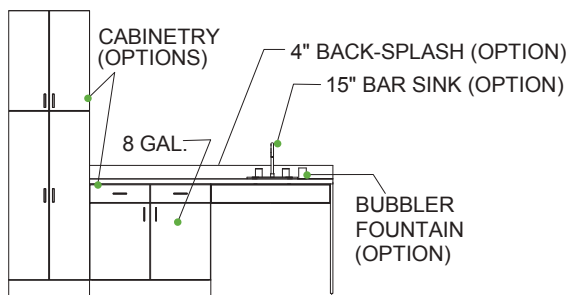
REMOVE WINDOWS



ADD COAT RACK



ADD/REMOVE EXTERIOR DOORS



ADD CABINETS, SINK, OR BUBBLER FOUNTAIN

ADDITIONAL ADA APPROVED OPTIONS

- REMOVE CEILING FAN
- REMOVE I.T. / DATA BOARD
- MIRROR FLOOR PLAN
- ADD/REMOVE RECEPTALS OR DATA PORTS
- SUBSTITUTE LARGER ELECTRICAL PANEL
- ADD CEILING OR FLOOR RECEPTACLES
- ADD INTERIOR WALLS
- DROP CEILING WITH DROP IN LIGHTS
- ADD TACK BOARD INTERIOR WALL COVERING
- ADD MINI BLINDS OR ROLLER SHADES

THE ENVIRONMENTALLY SMART CHOICE[®]

EXTERIOR



INTERIOR



Anticipated 50% Less Energy Use & 55-65 Year Lifespan With Adequate Maintenance.

Occupancy Capacity: 24-30 Students



modernbuildingsystems.com/smartclassroom



800-682-1422



sales@modernbuildingsystems.com