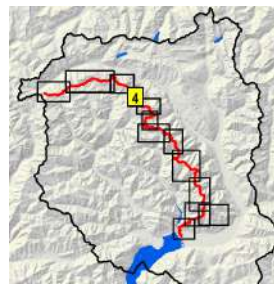




Leit - 
 Campo Tencia - 

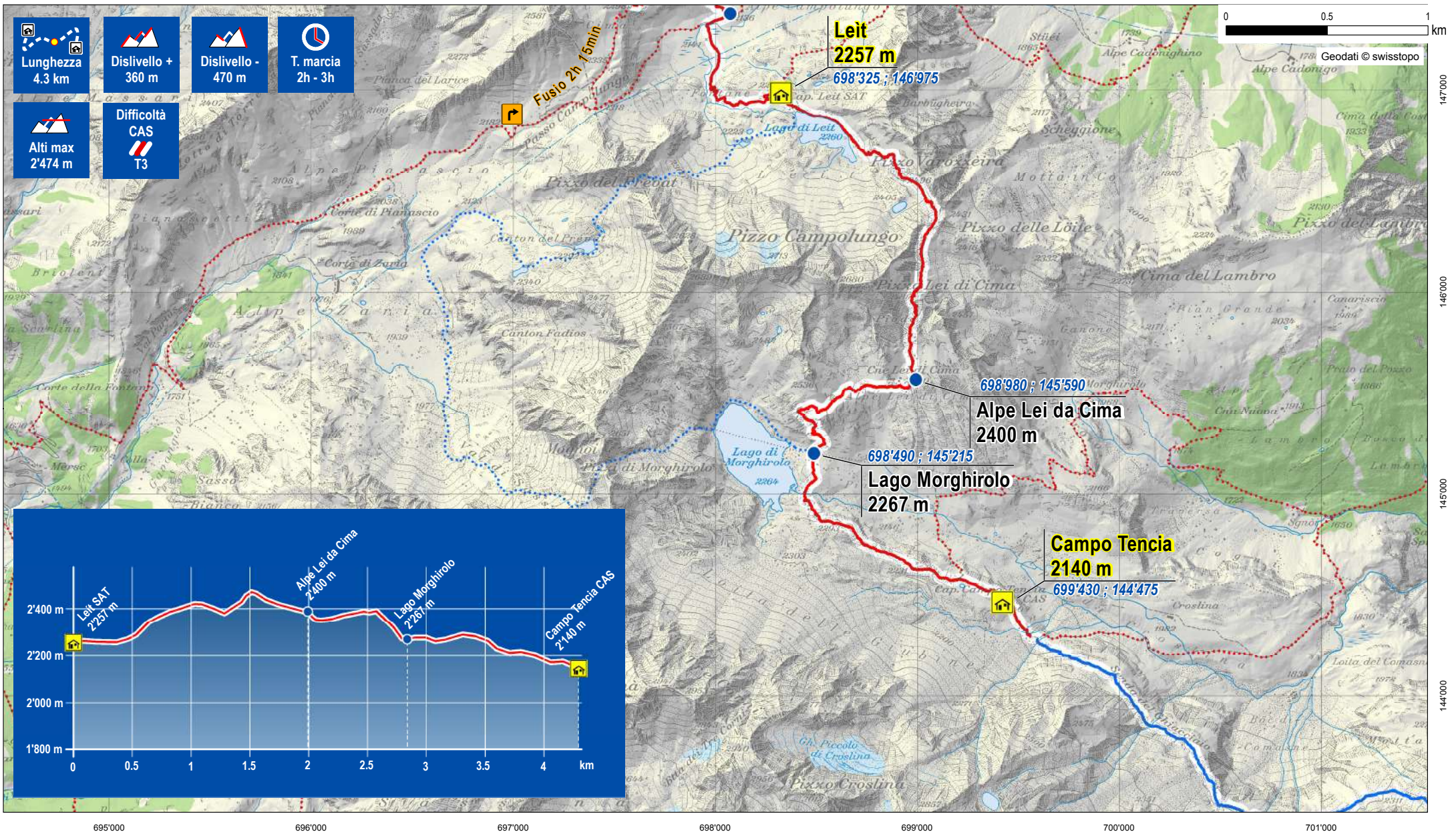
Itinerario:
 Cap. Leit SAT - Alpe Lei di Cima - Lago Morghirolo - Cap. Campo Tencia
 CAS





-  Punto topografico importante
-  Capanna inizio/fine tappa
-  Capanna d'appoggio
-  Passaggio (T6)
-  Via discesa a valle
-  Fermata mezzi pubblici
-  VAI Traccia alpina
-  VAI Sentiero di montagna
-  Rete sentieri ufficiali tracce alpine
-  Rete sentieri ufficiali montagna



1:25'000



-  Lunghezza
4.3 km
-  Dislivello +
360 m
-  Dislivello -
470 m
-  T. marcia
2h - 3h

-  Alti max
2'474 m
-  Difficoltà
CAS
T3

