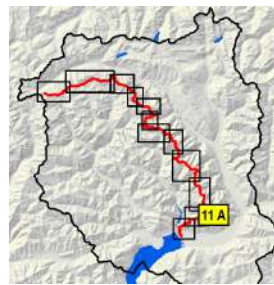








# via alta 11A idra

Borgna -   
 Albagno - Mornera - 

Itinerario:  
 Cap. Borgna SEV - Passo di Ruscada - Cima dell'Uomo - Btta Erbea -  
 Cap. Albagno UTOE - Mornera



-  Punto topografico importante
-  Capanna inizio/fine tappa
-  Capanna d'appoggio
-  Passaggio (T6)
-  Via discesa a valle
-  Fermata mezzi pubblici

-  VAI Traccia alpina
-  VAI Sentiero di montagna
-  Rete sentieri ufficiali tracce alpine
-  Rete sentieri ufficiali montagna



1:25'000

