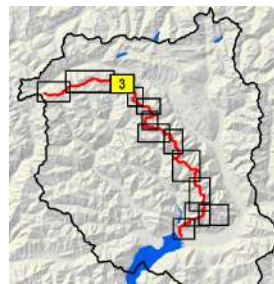










Garzonerà - 
Leit - 

Itinerario:
Cap. Garzonerà SAT - Lago di Cara - Valle dei Cani - Alpe Campolungo -
Cap. Leit SAT



-  Punto topografico importante
-  Capanna inizio/fine tappa
-  Capanna d'appoggio
-  Passaggio (T6)
-  Via discesa a valle
-  Fermata mezzi pubblici

-  VAI Traccia alpina
-  VAI Sentiero di montagna
-  Rete sentieri ufficiali tracce alpine
-  Rete sentieri ufficiali montagna



1:25'000

