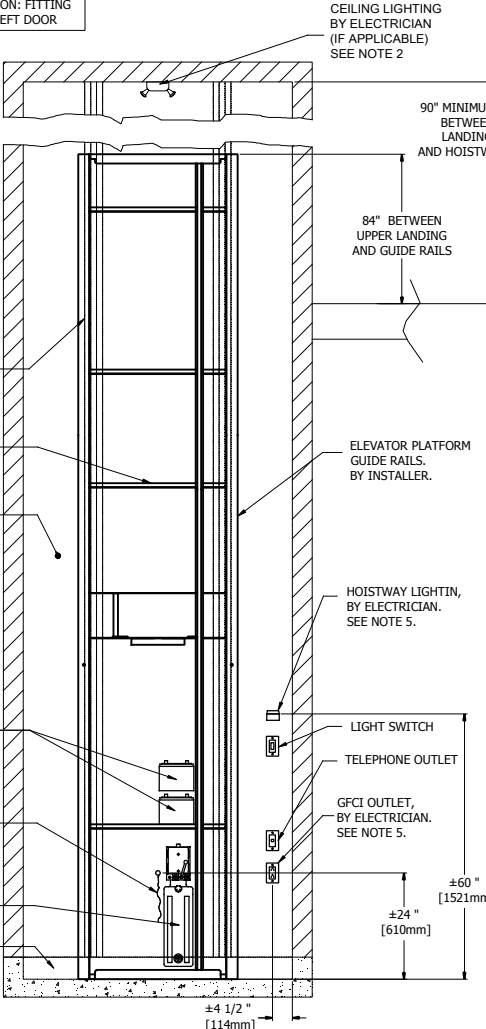


DOORS WITH ACCESS IN B MAY BE DISPLACED ACCORDING TO CUSTOMER NEEDS

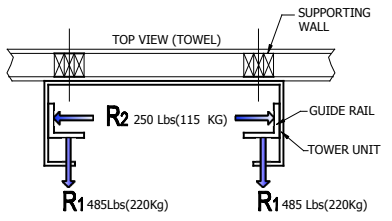
**1 ELVOR\_BC**

**DOOR INSTALLATION:**  
 1) THE CONSTRUCTION OF THE WALLS MUST BE DONE AFTER THE INSTALLATION OF THE LANDING DOORS.  
 2) LEAVE A 3/4" SPACE ON EACH SIDE OF THE DOOR TO ALLOW SIDEWAY ADJUSTEMENT ON SITE

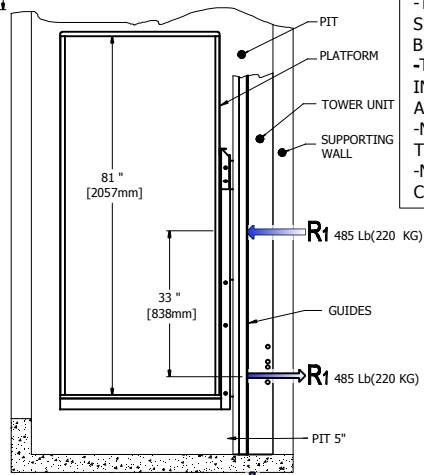
ELVOR TECHNICAL DATA	
TYPE	VERTICAL ENCLOSED
RAIL LINEAR WEIGHT	5 lb/ft
CODE	CSA/B355-09
MAX CAPACITY	2 PERSONS AND 1 WHEELCHAIR
MAX LOAD	750 Lb (340 Kg)
TRACTION MACHINE	HYDRAULIC WITH CABLES
VELOCITY	0.12m/s 24pi/min
MAX TRAVEL	(9150 mm) (7000mm/B355)
EMERGENCY BRAKES	SAFETY BRAKE OPERATED BY THE ACTION OF BREAKING OR SLACKENING OF THE CARRIAGE SUSPENSION MEANS
CAB/FLOOR	34x54po(860x1370mm), 34x60po(860x1524mm) 36x54po(915x1370mm), 36x60po(915x1524mm)
CAB FINISHES	SEE DOCUMENT C-02
DOORS	HOMOLOGUÉE, SEE DOCUMENT P-01
DOOR INTERLOCK	HONEYWELL (CDI) OU GAL (TYPE N)
ALIMENTATION	24V CC, 120V AC



**2 SUPPORTING WALL ELEVATION**



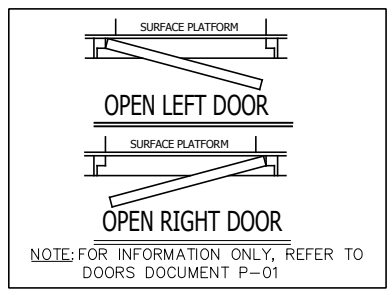
**4 RÉACTIONS ON GUIDE RAIL**



**3 RÉACTIONS**

- NOTE**
- ELEVATOR PLATFORM MODEL: **ELVOR**
  - INSTALL 1 PERMANENT CEILING FIXTURE WITH MIN 2 BULBS (100 LUX MIN). A BULB FAILURE SHOULD NOT PREVENT THE OTHER BULB FROM LIGHTING.
  - INSTALL 1 FIXTURE AT EACH FLOOR, OUTSIDE THE HOISTWAY WITH THE SWITCH INSTALLED AS CLOSE AS POSSIBLE TO THE LANDING DOOR.
  - ROUTE TO THE SUPPORTING WALL, A 120VAC 20A WIRE FROM MAIN DISCONNECT SWITCH AT 24" FROM PIT FLOOR.
  - ROUTE ONE CIRCUIT 120VAC, 15A FROM BREAKER PANNEL FOR PIT & SHAFT LIGHTING AND IF REQUIRED, THE GFCI TYPE OUTLET IN THE PIT. OUTLET BREAKER TRIP MUST NOT COMPROMISE LIGHTING.
  - AS REQUIRED BY LOCAL BUILDING CODE, FLOOR SUPPORT TO MEET BASE LOAD AND REACTIONS REQUIRED TO SUPPORT TOWER MOUNTING REACTIONS. SUPPORTING WALL MUST BE SMOOTH, WITHOUT RECESS OR PROJECTIONS.
  - BUILDING ENGINEER OR CONTRACTOR IS RESPONSIBLE TO MEET TOWER REACTIONS REQUIREMENTS. ALL WORKS AND MATERIALS MUST CONFORM WITH AUTHORITIES HAVING JURISDICTION.
  - TRIPLE STUD HEIGHT SHOULD NOT EXCEED 12' UNLESS FIXED AT EACH 12'. STUDS CAN BE SUBSTITUTED WITH DOUBLE 2x6 STUDS, 4"x4"x1/4" HSS SQUARE TUBING, OR ANY OTHER SUITABLE MATERIAL APPROVED BY THE BUILDING'S STRUCTURAL ENGINEER.
  - CHECK WITH ARCHITECT IF AUTOMATIC DOOR OPENERS ARE REQUIRED ON LOCATION.

- NOTE**
- THIS ELECTRONIC DOCUMENT IS NOT SIGNED OR SEALED BY A PROFESSIONAL ENGINEER AND MAY NOT BE USED FOR CONSTRUCTION PURPOSES
  - THIS ELECTRONIC DOCUMENT IS STRICTLY FOR INFORMATION PURPOSES (OR COORDINATION AS APPLICABLE)
  - NO GUARANTEES ARE GIVEN ON THE INTEGRITY OF THE TRANSMITTED INFORMATION.
  - NO GUARANTEES ARE GIVEN ABOUT PAST OR FUTURE CHANGES TO THIS DOCUMENT



**Les Escalateurs Atlas Inc.**

8255 Boul. Laframboise  
 St-Hyacinthe (Québec)  
 J2R 1E8, Canada  
 Tel: (450) 796-5708  
 Fax: (450) 796-5110

TITLE: GENERAL INFORMATION			
No. DRAWING: ELVOR	DATE: 12/02/2016	REVISION	
CODE: B-355	DRAFTER: M. DEBUSSCHERE	No SHEET: 1/1	