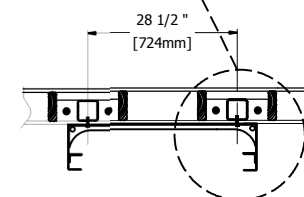
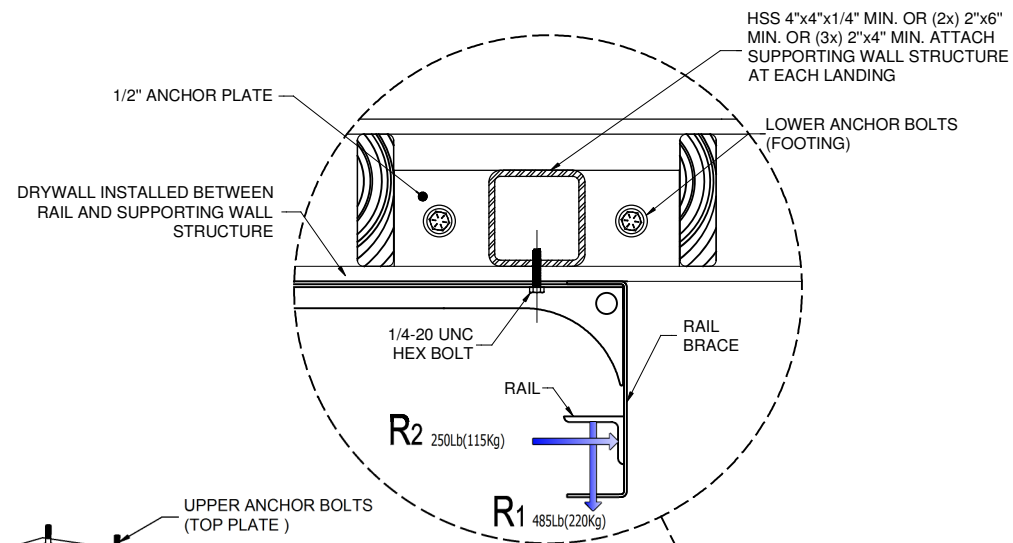
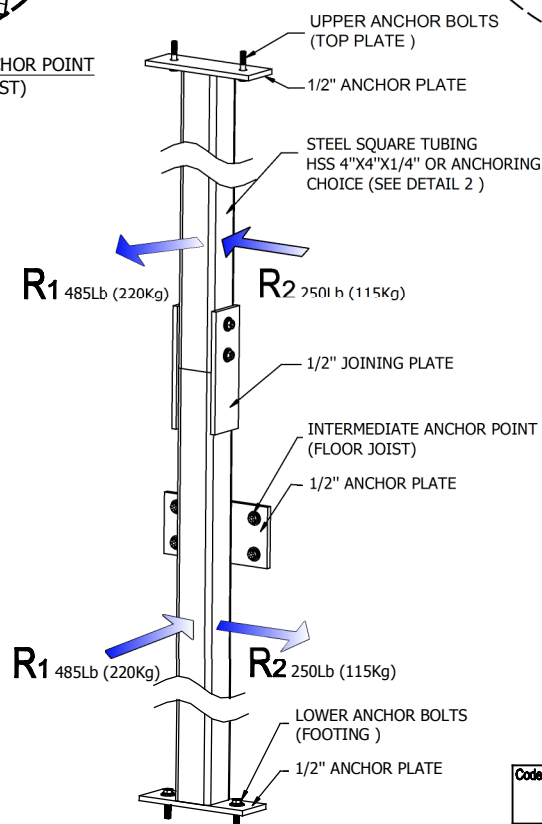


1 ISOMETRIC VIEW
ELVOR

NOTE:
 1: THIS DRAWING ILLUSTRATES A TYPICAL SUPPORTING WALL STRUCTURE INSTALLATION AND ILLUSTRATED DETAIL SHOULD BE CHANGED WITH MATERIAL CHOICE.
 2: THE CUSTOMER IS RESPONSIBLE TO HAVE THE LINK BETWEEN THE SUPPORTING WALL STRUCTURE AND THE BUILDING CALCULATED BY A STRUCTURAL ENGINEER.
 3: THE MAXIMUM DISTANCE BETWEEN ANCHOR POINTS IS 12' [3658mm].



2 TOP VIEW DETAIL
INSTALLATION



3 ELEVATION DETAIL

GENERAL DOCUMENT,
INFORMATIONAL PURPOSES ONLY



Les Escalateurs Atlas Inc.

3175 Boul. Choquette
 St-Hyacinthe (Québec)
 J2S 7Z8, Canada
 Tel: (450) 796-5708
 Fax: (450) 250-5110

Code:	B-355
Safety:	± 1/16"
Drafter:	M. Debusschere
Date:	03-14-2018

Title:		GENERAL ANCHORING STRUCTURE DETAILS	
No drawing:	F-03	Status:	INFORMATION
No Sheet:	1/1	Revision:	2