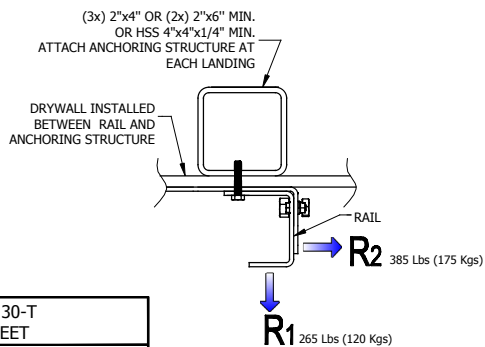
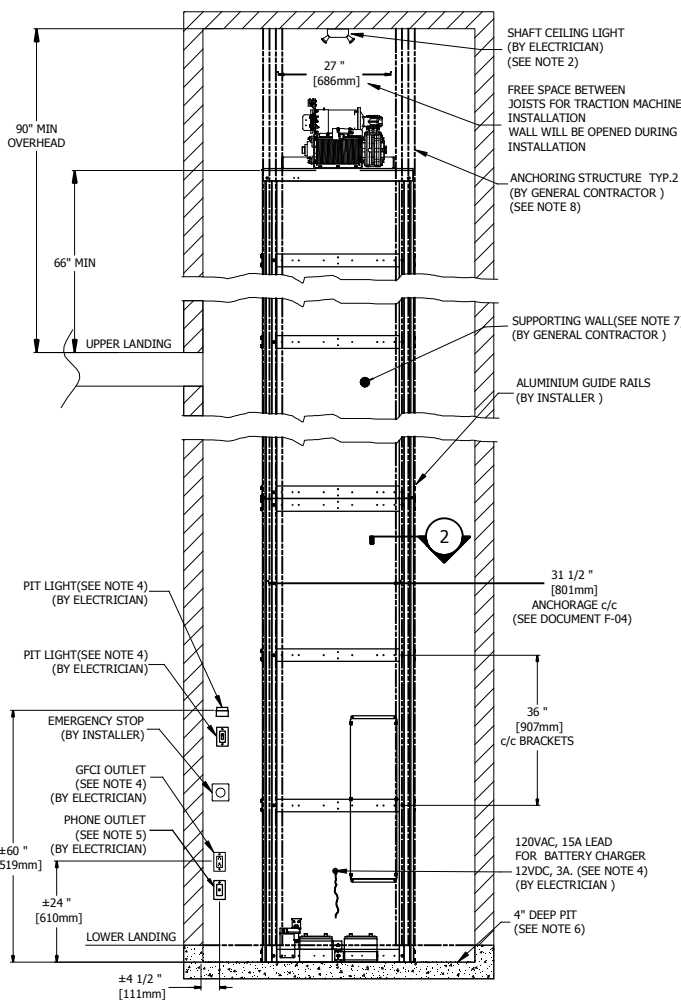


NOTE
1. CEILING SIZE
 WIDTH: 31.5" [800mm] MIN. AT 48" [1219mm] MAX.
 LENGTH: 54" [1372mm] MIN. AT 66" [1676mm] MAX.
 *CEILING AREA MAX. 3100sq' [1.99m²] & MIN. 1161sq' [0.75m²]
2. THE SIDE OF DOOR OPENING MAY BE CHANGE.
3. ON ACCESS B (IF APPLICABLE) THE DOOR WANT TO BE MOVE.

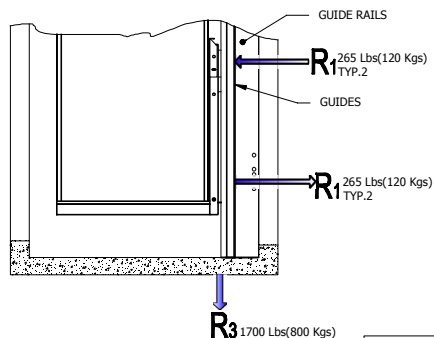
1 AR-130-T_B



2 RAILS REACTION

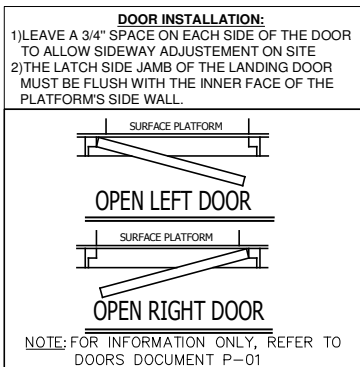


4 SUPPORTING WALL



3 REACTION

NOTE:
 HOISTWAY DESIGN MUST FOLLOW A SAFETY FACTOR OF 5, SEE CAN/CSA-B355.



- NOTE**
- ELEVATOR PLATFORM MODEL: **AR-130-T**
 - INSTALL 1 PERMANENT CEILING FIXTURE WITH MIN 2 BULBS (100 LUX MIN). A BULB FAILURE SHOULD NOT PREVENT THE OTHER BULB FROM LIGHTING.
 - INSTALL 1 FIXTURE AT EACH FLOOR, OUTSIDE THE HOISTWAY WITH THE SWITCH INSTALLED AS CLOSE AS POSSIBLE TO THE LANDING DOOR.
 - ROUTE TO THE SUPPORTING WALL, TWO 120VAC LEAD WIRES FROM THE BREAKER PANEL TO THE INDICATED LOCATION: ONE 24DC/120VAC 15A/10/1N/1GND (1 BLACK+1 WHITE/NEUTRAL)+1 GND), ONE 15A FOR SHAFT LIGHTING, PIT LIGHTING, SWITCH LIGHT, GFCI TYPE OUTLET IN THE PIT. OUTLET BREAKER TRIP MUST NOT COMPROMISE LIGHTING.
 - TELEPHONE JACK PRIORITY FOR BILATERAL COMMUNICATIONS (HARD WIRE)
 - PREPARE A 4" MIN. PIT TO THE SAME INTERIOR DIMENSIONS AS THE ELEVATOR SHAFT. THE PIT SHOULD MINIMALLY BE MADE WITH 4" OF 25MPa REINFORCED CONCRETE WITH 5% TO 8% AIR ENTRAINMENT (6X6, #9 WIRE MESH).
 - SUPPORTING WALL MUST BE SMOOTH, WITHOUT RECESS OR PROJECTIONS ON ALL ITS SURFACE.
 - TRIPLE STUD HEIGHT SHOULD NOT EXCEED 12' UNLESS FIXED AT EACH 12'. STUDS CAN BE SUBSTITUTED WITH DOUBLE 2x6 STUDS, 4"x4"x 1/4" HSS SQUARE TUBING, APPROVED BY THE BUILDING'S STRUCTURAL ENGINEER.
 - ALL WORKS AND MATERIALS MUST CONFORM WITH AUTHORITIES HAVING JURISDICTION.
 - CHECK WITH ARCHITECT IF AUTOMATIC DOOR OPENERS ARE REQUIRED ON LOCATION.

NOTE
 -THIS ELECTRONIC DOCUMENT IS NOT SIGNED OR SEALED BY A PROFESSIONAL ENGINEER AND MAY NOT BE USED FOR CONSTRUCTION PURPOSES
 -THIS ELECTRONIC DOCUMENT IS STRICTLY FOR INFORMATION PURPOSES (OR COORDINATION AS APPLICABLE)
 -NO GUARANTEES ARE GIVEN ON THE INTEGRITY OF THE TRANSMITTED INFORMATION.
 -NO GUARANTEES ARE GIVEN ABOUT PAST OR FUTURE CHANGES TO THIS DOCUMENT

PLATFORM AR-130-T TECHNICAL SHEET	
TYPE	VERTICAL, CLOSED SHAFT
CODE	CSA/B355-09
RAIL LINEAR WEIGHT	5 lb/ft
MAX CAPACITY	2 PERSONS AND 1 WHEELCHAIR
MAX LOAD	750 Lb (340 Kg)
TRACTION MACHINE	LIFTING CABLES AND WINDING DRUM
MOTOR	24 VDC, 1HP
VELOCITY	23 pi/min(0.12m/s)
MAX TRAVEL	(9150 mm) (7000mm/B355)
SAFETY GEAR	SAFETY BRAKE OPERATED BY THE ACTION OF AN OVERSPEED GOVERNOR
CAB FINISHES	SEE DOCUMENT C-01
CAB	MAX. 42x66po (1067 mm x 1676 mm)
FLOOR FINISH	ANTI SKID FINISH
COMMANDS	CONSTANT PRESSURE
CONTROLLER	CSA (B355 & B44.1)
DOOR INTERLOCK	HONEYWELL (REALIGN)
TRACTION CABLES	2X AIRCRAFT 7X19 Ø1/4" MILDT 83420 7000LBS CAP

Les Escalateurs Atlas Inc.
 3175 Boul. Choquette
 St-Hyacinthe (Québec)
 J2S 7Z8, Canada
 Tél: (450) 796-5708
 Fax: (450) 250-5110

TITLE: GENERAL INFORMATION

No. DRAWING	DATE:	REVISION
AR-130-T	02/03/2018	1
CODE:	DRAFTER:	No SHEET:
B-613	M. DEBUSSCHERE	1/1