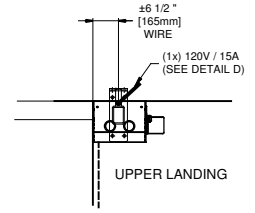
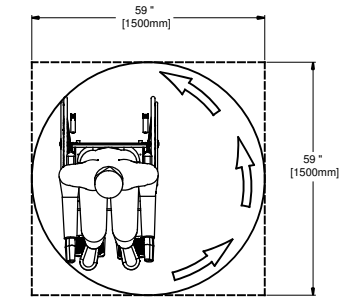


A TOP VIEW

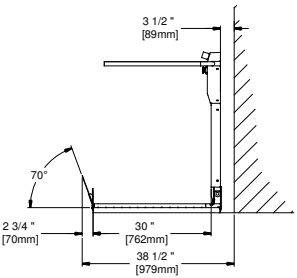
C ELECTRICAL DETAIL UPPER LANDING



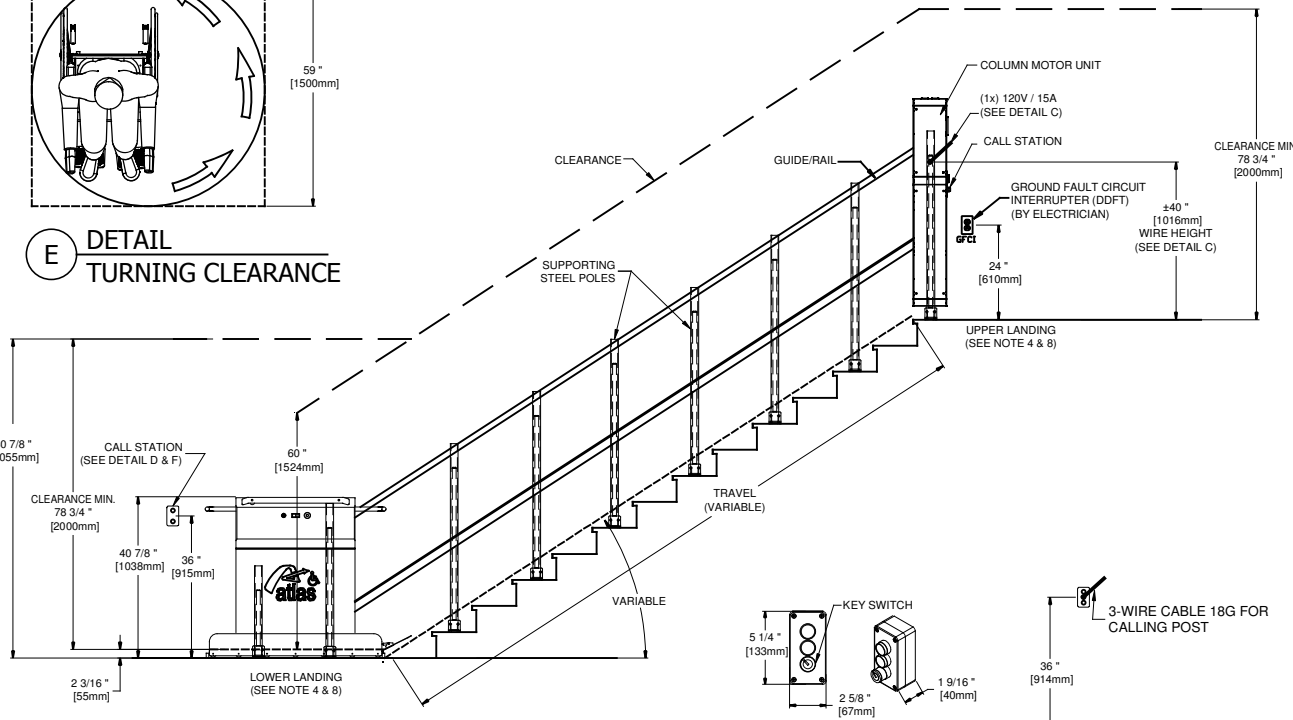
FOR REFERENCE ONLY
DO NOT USE FOR CONSTRUCTION



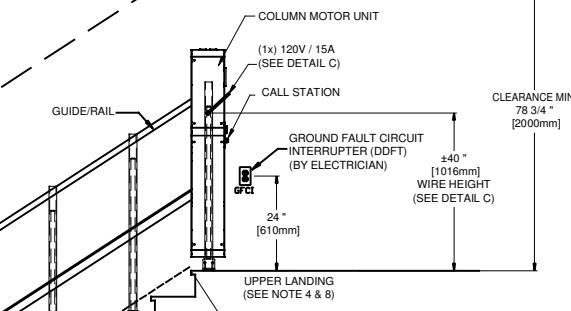
E DETAIL TURNING CLEARANCE



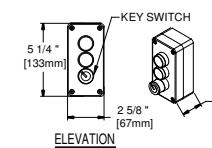
G SIDE VIEW PLATFORM



B ELEVATION VIEW



D ELECTRICAL DETAIL LOWER LANDING



F CALL STATION SURFACE MOUNT

PLATE-FORME AC-105-CH FICHE TECHNIQUE	
CODE	B-355-09 & B-613-00
CAPACITÉ MAX.	UNE PERSONNE EN FAUTEUIL ROULANT
CHARGE MAX.	500 lb (227kg)
ENTRAÎNEMENT	PIGNON ET CHAÎNE
CABLE D'ENTRAÎNEMENT	CHAÎNE À ROULEAUX #50 ANSI/ASME B29.100
VITESSE	19 pi/min(0.10m/s)
ALIMENTATION ELECTRIQUE	120VAC 15A (moteur fonctionne sur batteries)
SURFACE NETTE	VARIABLE
MANOEUVRE	Boutons à pression maintenue
CONTROLEUR	Bectrol BEC03 (PUISSANCE : BEC04)
ANGLE D'INCLINAISON	VARIABLE
BRAS DE SÉCURITÉ	À DÉPLOIEMENT MOTORISÉ
DÉPLOIEMENT DU PLANCHER	MOTORISÉ
FINI DU PLANCHER	SURFACE ANTI-DÉRAPANTE
SECTIONNEUR	SQUARE D CH221N/EIK031EV
RÉACTION AU MUR	300 lb VERS L'EXTÉRIEUR MUR DE SOUTIEN
MOTEUR	24VDC 1HP

- NOTE**
- This drawing covers the installation of the platform in the stairway.
 - Anchor the rail guides into each supporting steel poles and fixed each poles on concrete steps.
 - Apply section 38 of the canadian electrical code.
 - Provide a 60° free pivoting area at each landing.
 - Provide at least 100 lx of lighting in the stairway, on the platform and at each landing.
 - The owner has the responsibility to obtain the studies and approvals to ensure an installation that will conform to all local laws, codes and regulations, as well as any authorities having jurisdiction in the municipality.
 - Advise the local fire department to implement an intervention plan in case of an emergency.
 - Verify the various clearings, emergency exits, as well as the implementation of the platform inside your building with professionals such as architects, structural engineers and ergotherapists.
 - All construction details drawn have for single purpose: assisting the general contractor in the construction or to change the environment of the platform in order to meet the local authority requirements and regulations for the installation. given dimensions have not been verified and as a result, atlas gets off all responsibilities arising from a data error.
 - Take wheel chair dimension when platform is under 30" width

PROJECT: GENERAL INFORMATION



Les Escalateurs Atlas Inc.
3175 Boul. Choquette
St-Hyacinthe (Québec)
J2S 7Z8, Canada
Tél: (450) 796-5708
Fax: (450) 250-5110

CONFIGURATION DETAILS	
Code:	B-613 & B-355
Lift cage:	42" HEIGHT
Drafter:	M. Debusschere
Date:	10-23-2018

No Drawing:	AC-105-CH_90L_TYP	Revision:	3
Status:	INFORMATION	No Sheet:	1/1