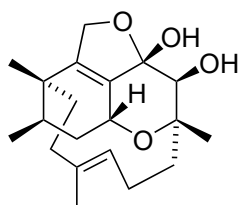


17-20



Phomactin A

- 17) $\text{VO}(\text{OEt})_3$, TBHP (excess)
- 18) $\text{Me}_4\text{NBH}(\text{OAc})_3$ CsOAc, 18-crown-6
- 19) DMP, NaHCO_3 then NaOMe
- 20) Red-Al[®]

Mechanism step 4)

