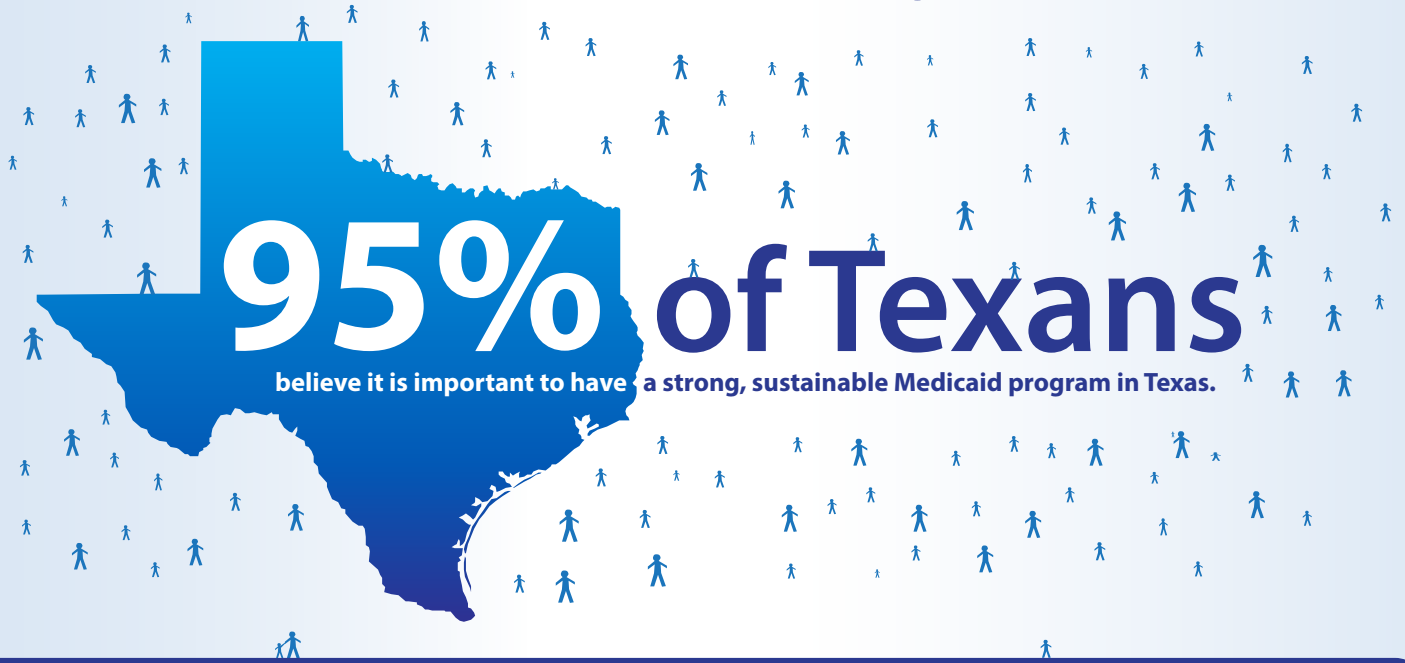


TEXAS VOTERS SUPPORT

Sustainable Medicaid Programs



POLL QUESTION: Do you believe that it is important or not important to have a strong, sustainable Medicaid program in Texas to serve children, the elderly and low income patients in need?

75% of Texans OPPOSE cutting the Medicaid program



Voters believe that making Medicaid accessible to those who need it should be the top priority for the Texas Medicaid Program

“Which of the following should be the top priority for the Texas Medicaid Program? And what would you say should be the second highest priority?”

