

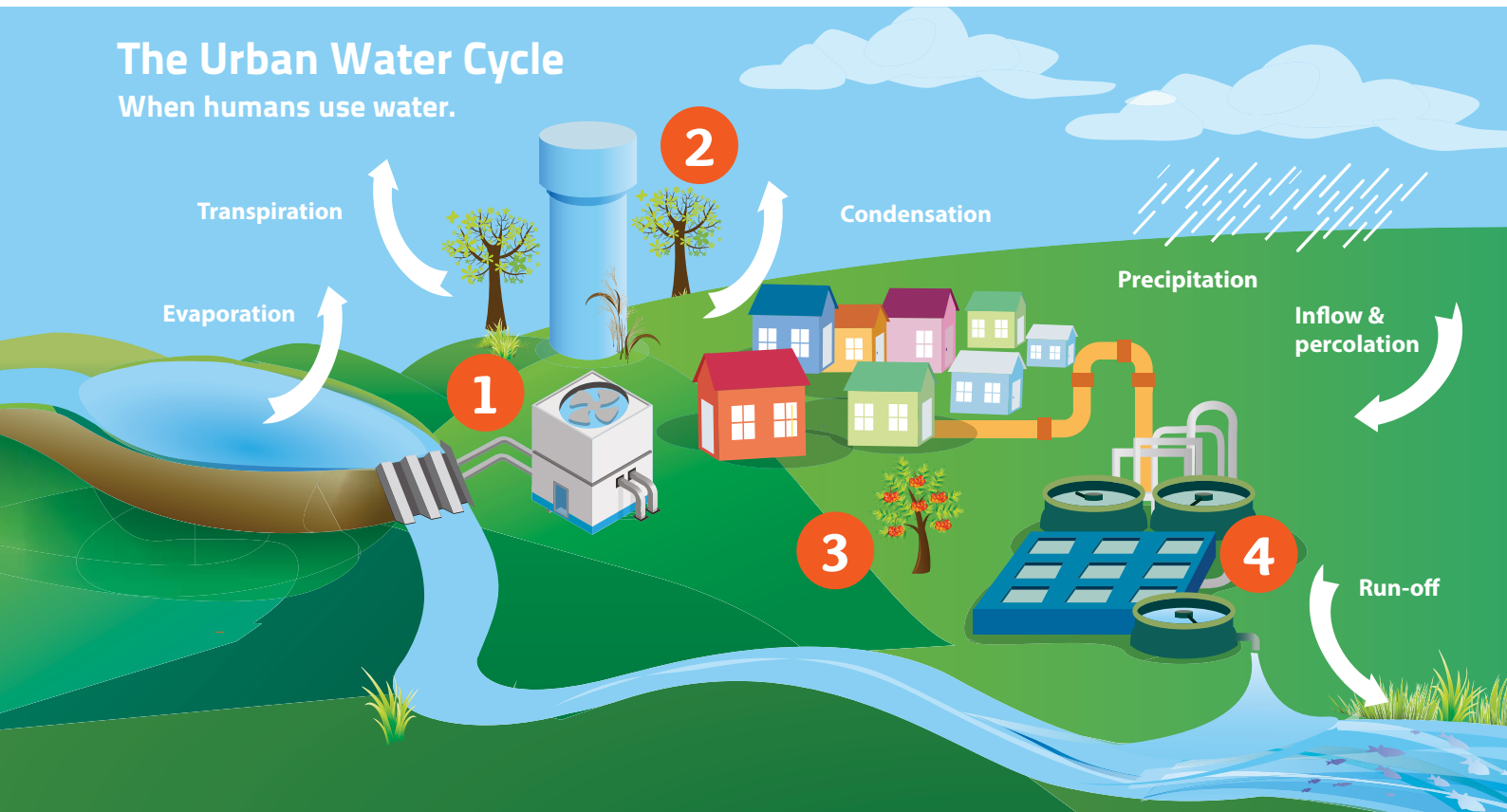


Unitywater

Urban Water Cycle

So how does water get to my tap?
And where does it go after I use it?

The Urban Water Cycle When humans use water.



The urban water cycle has four additional processes

1 Dams and water treatment plants

Water falls from the sky as rain and is captured in **dams**. The water is cleaned at a water treatment plant before being pumped to you in **underground pipes**.

2 Water storage

The clean water is stored in **water reservoirs and towers** until it's needed.

3 Stormwater drainage

Water run-off from buildings and streets is collected in **stormwater drains**, where it flows to the ocean.

4 Sewage treatment

After you use water, it is piped to a **sewage treatment plant** to be cleaned and treated. The **clean water or effluent**, is then returned to waterways at the **outfall**.

More information

Visit education.unitywater.com to explore:

➤ The interactive urban water cycle story

Visit unitywater.com/teachers to explore:

➤ The sewage treatment fact sheet

➤ The urban water cycle video

➤ A virtual tour of the sewage treatment plant



Education
UNITYWATER