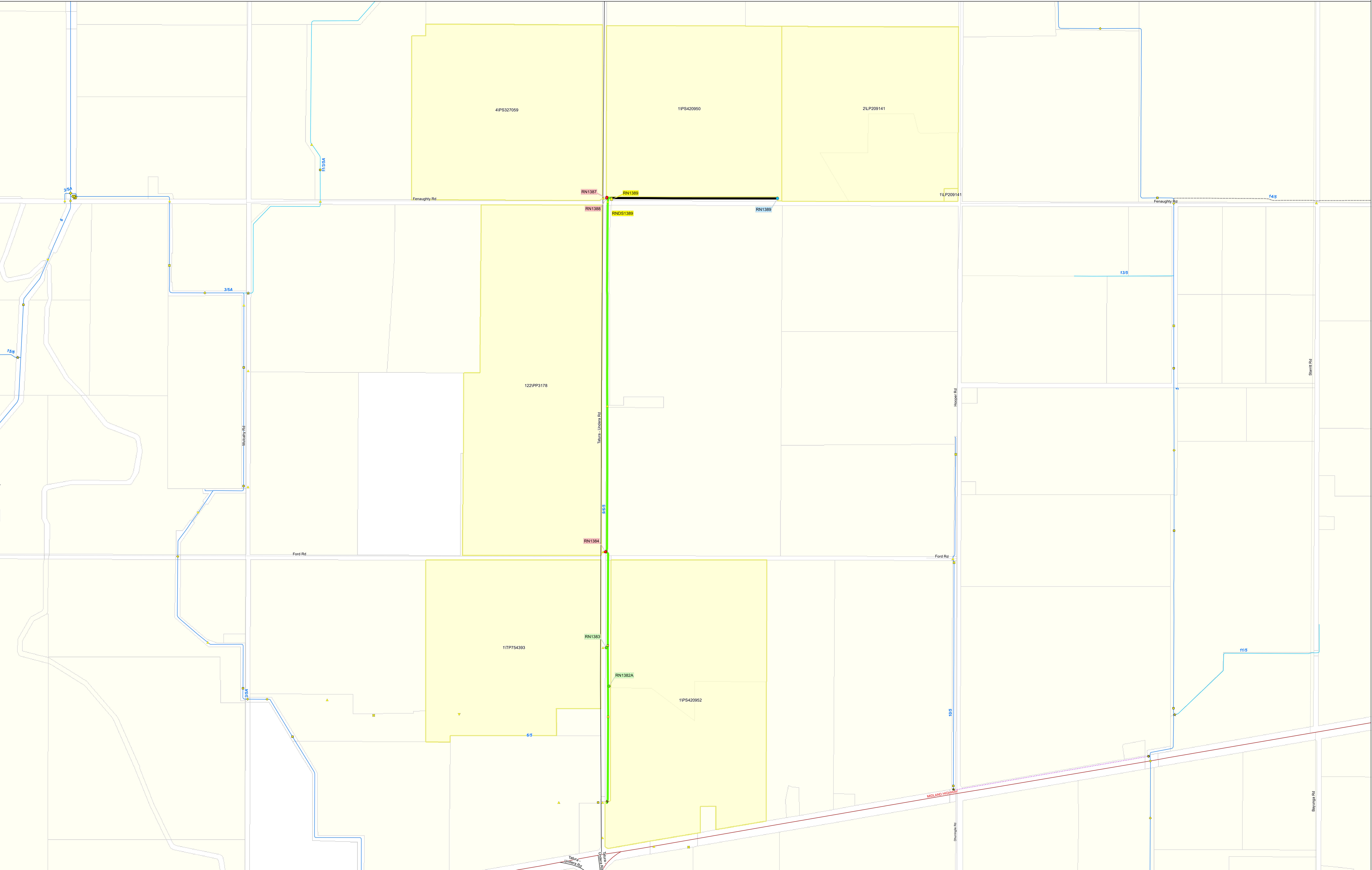



Reconfiguration Plan : CG03 RP 2





IR185583

 27 FEB 2018

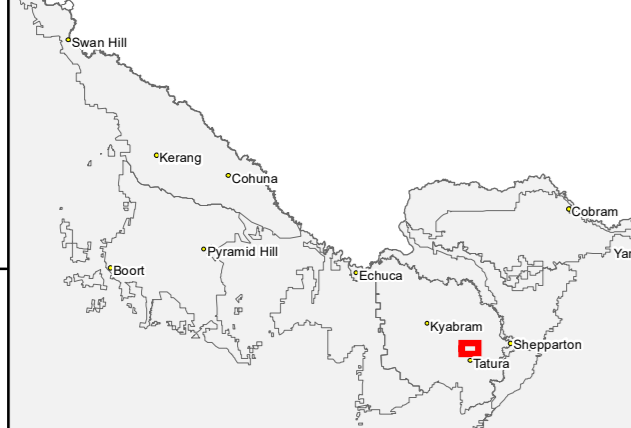
GOULBURN-MURRAY WATER

 40 CASEY STREET (PO BOX 165)

 TATURA VIC 3616

 Ph (03) 5833 5500 Fax (03) 58245827

 gmsupport@gmwater.com.au



Service Point Modernisation Action <ul style="list-style-type: none"> ● Retain ● Relocate ● Replace ● Rationalise ● Relocation Point 	Channel Modernisation Action <ul style="list-style-type: none"> — Retain channel with no modernisation — Retain channel with remediation — Retain channel with modernisation — Pipeline — Decommission channel 	G-MW Irrigation Structures <ul style="list-style-type: none"> ● Abandoned Structure ● Bridge ▲ Culvert ● Drainage Inlet 	<ul style="list-style-type: none"> ⚡ Electrical Crossing ● Farm Irrigation Crossing ● Flume ■ Footbridge ⚙ Monitoring Station 	<ul style="list-style-type: none"> ● Offtake ● Outfall ● Pump Station ■ Regulator ★ Regulator Combine 	<ul style="list-style-type: none"> ■ Subway ▼ Syphon ⌘ Valve - Isolation ■ Weir 	Channel Network <ul style="list-style-type: none"> — Backbone Channel — Non- Backbone Channel --- Decommissioned Channel --- Pipeline 	Transport <ul style="list-style-type: none"> — Freeway — Highway — Major Road — Semi-Major Road — Minor Road 	<ul style="list-style-type: none"> — Waterway ■ Reservoir ■ Lake ■ DCRP Customer Parcels ■ Other Customer Properties ■ Property/Land Not Serviced
---	---	---	--	--	---	---	---	---

SCALE AT A0 1:5,400

 0 0.125 0.25 0.5 km

The content of this product is provided for information purposes only. No claim is made as to the accuracy or authenticity of the content of the product. In no event will G-MW, its agents, instrumentalities and employees be liable for the accuracy of the information contained within this product nor its use or reliance placed on it. The information used within this product is provided on the basis that all persons accessing the information undertake responsibility for assessing the relevance and accuracy of its content.