

Capital Projects and Outage Execution

When millions are on the line, our customers know they can count on GRP Mechanical Company, Inc. for the safe, Primavera schedule and cost driven execution of planned scope and forced outages. By integrating operations, engineering, craft management and technology, GRP has developed a proven system for success with turnkey project and outage execution.

Our long-standing tradition of safety and contracting excellence has allowed us to become a major force in power generation. As the industry has changed, GRP has evolved with it and is fully prepared to assist with building and maintaining the infrastructure necessary to meet today's cleaner, and more environmentally friendly power generation facilities.



Safety

- GRP Mechanical Company is dedicated to the safety of all our employees. Our Safety Program is the number one focus for the organization regardless of the project. A Job Safety Analysis (JSA) is performed daily prior to the start of any work and anytime the job or scope changes throughout the day. All personnel involved with a given piece of work are involved in the JSA process.
- GRP Mechanical Company, Inc. has an ISNetworld rating of A+



Project Management

- Planning and Budget Development
 - Primavera P6
 - MS Project
- Progress reporting via updated schedules
- Timely cost reporting on T&M scope
- Next day time sheet availability
- Component and system inspection
- Root cause analysis

Quality Assurance/Quality Control

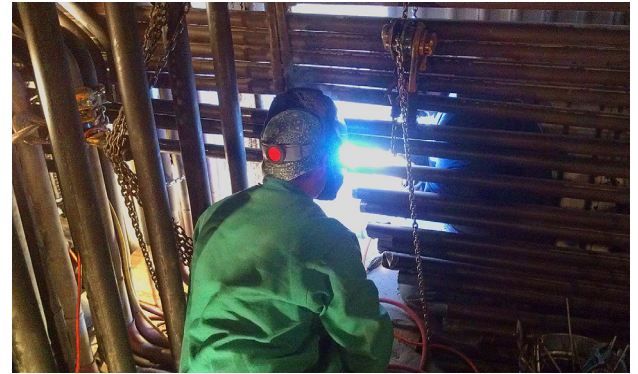
- National Board "R" Stamp
- ASME "PP" and "S" Stamps
- All weld inspection personnel are AWS certified welding inspectors
- Systems and components

System and Components

- Fabrication shop support
- R stamp code repairs
- Quality assurance / quality control
- NDE ready

Welding and Support

- Over 200 qualified welding procedures
- Highly experienced with CSEF steels and Alternative Welding Method 6
- Fully staffed and equipped fabrication shop



Experience (not all inclusive)

Boilers

- Boiler Fabrications
- Boiler Component Installation
- Boiler Repairs
- Structural Support
- Insulation and Lagging
- Inspection Management and Reporting

Piping

- Boiler – HEP, Reheat and Feedwater
- Auxiliary Steam
- Valve Repairs
- Turbine Piping
- Circulating Water
- Cooling Water
- Ash Piping
- Air Piping
- Hot Tapping
- Inspection Management and Reporting

Pressure Vessels - All

- Installation
- Repair
- Inspection Management and Reporting

Boiler Cleaning

- Soot Blowers – Air and Steam Systems
- Water Cannons

Boiler Air and Flue Gas

- Air Heaters
- Duct Work
- Expansion Joints
- Dampers
- Fans
- Test Grids

Boiler Fuel Management

- Burners
- Ball Mills
- B&W and C-E Pulverizers
- Stokers
- Feeders
- Storage Bunkers and Silos
- Conveyers and Transfer
- Stackers and Reclaim
- Unloading Facilities

Ash Management and Handling

- Clinker Grinders
- Wet Bottoms
- Submerged Flight Conveyers
- Dry Flight Conveyers
- Sluice Piping
- Hydro-clones
- Blowers
- Air Cannons

Environmental Controls

- Dry and Wet Precipitators
- SCRs
- Wet Flue Gas Desulfurization
- Dry Flue Gas Desulfurization
- Bag Houses
- Limestone Mills

For more information about the GRP Powerhouse and Industrial Boiler Division, contact:
1 Mechanical Drive, Bethalto, IL 62010 • 618-258-9000
jcutsinger@grpmech.com • www.grpmech.com