



THE MAPLES
GREENVALE

HOUSE & LAND

THE MAPLES, GREENVALE

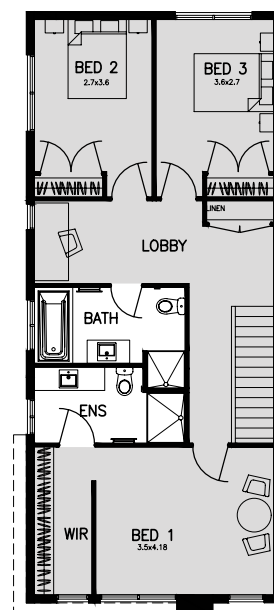
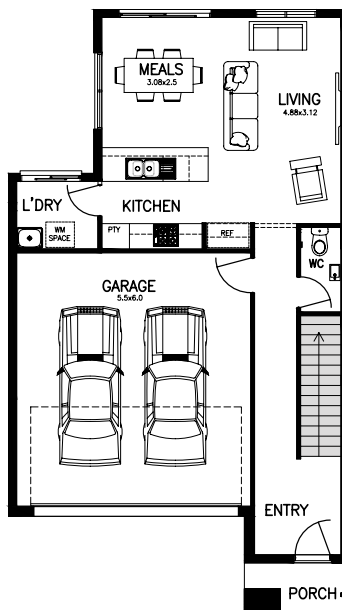
\$477,900

Lot 638 French Road, Greenvale
Land Size: 214m²

3  2  2 

Great value 3 bedroom home, fixed price with complete turn-key inclusions.

- ▶ Full turn-key inclusions
- ▶ 25 year structural guarantee
- ▶ 2590mm high ceilings to ground floor
- ▶ 600mm European Smeg Appliances
- ▶ 600mm European Smeg Dishwasher
- ▶ 20mm Stone benchtops to kitchen, bathroom and ensuite
- ▶ Carpets and tiles throughout
- ▶ Flyscreens and blinds to all windows
- ▶ Designer facade as depicted
- ▶ Full front and rear landscaping
- ▶ Coloured concrete driveway
- ▶ Fencing to all boundaries
- ▶ Letterbox and clothesline
- ▶ Fixed site costs including rock removal
- ▶ Plus much more!



All images are artist impression only, furniture and some fixtures and fittings are not included. Price is correct at time of publication and is subject to change without notice.

FOR MORE INFORMATION CONTACT NOSTRA HOMES 03 8331 3500



THE MAPLES
GREENVALE

HOUSE & LAND

THE MAPLES, GREENVALE

\$457,900

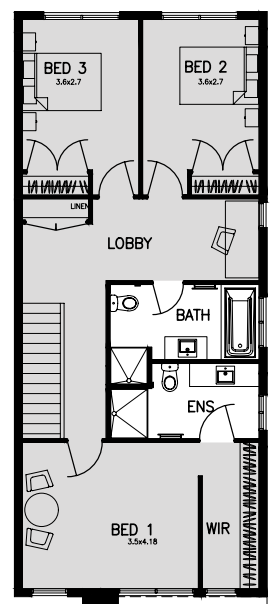
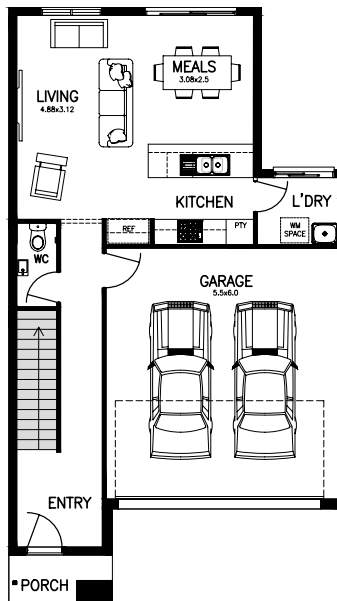
Lot 639 French Road, Greenvale
Land Size: 174m²

3  2  2 

Great value 3 bedroom home, fixed price with complete turn-key inclusions.

- ▶ Full turn-key inclusions
- ▶ 25 year structural guarantee
- ▶ 2590mm high ceilings to ground floor
- ▶ 600mm European Smeg Appliances
- ▶ 600mm European Smeg Dishwasher
- ▶ 20mm Stone benchtops to kitchen, bathroom and ensuite
- ▶ Carpets and tiles throughout
- ▶ Flyscreens and blinds to all windows
- ▶ Designer facade as depicted
- ▶ Full front and rear landscaping
- ▶ Coloured concrete driveway
- ▶ Fencing to all boundaries
- ▶ Letterbox and clothesline
- ▶ Fixed site costs including rock removal
- ▶ Plus much more!

All images are artist impression only, furniture and some fixtures and fittings are not included. Price is correct at time of publication and is subject to change without notice.



FOR MORE INFORMATION CONTACT NOSTRA HOMES 03 8331 3500



THE MAPLES
GREENVALE

HOUSE & LAND

THE MAPLES, GREENVALE

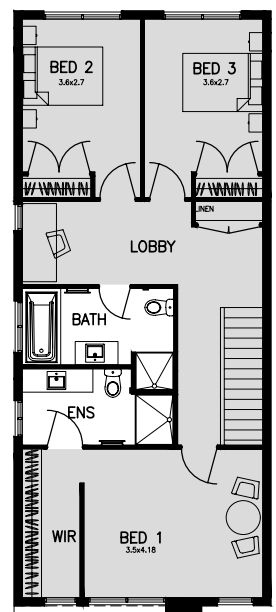
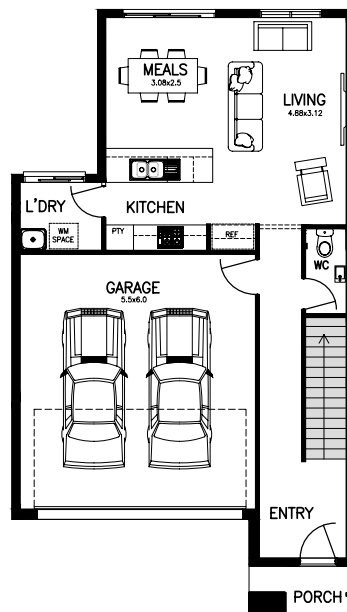
\$457,900

Lot 640 French Road, Greenvale
Land Size: 174m²

3  2  2 

Great value 3 bedroom home, fixed price with complete turn-key inclusions.

- ▶ Full turn-key inclusions
- ▶ 25 year structural guarantee
- ▶ 2590mm high ceilings to ground floor
- ▶ 600mm European Smeg Appliances
- ▶ 600mm European Smeg Dishwasher
- ▶ 20mm Stone benchtops to kitchen, bathroom and ensuite
- ▶ Carpets and tiles throughout
- ▶ Flyscreens and blinds to all windows
- ▶ Designer facade as depicted
- ▶ Full front and rear landscaping
- ▶ Coloured concrete driveway
- ▶ Fencing to all boundaries
- ▶ Letterbox and clothesline
- ▶ Fixed site costs including rock removal
- ▶ Plus much more!



All images are artist impression only, furniture and some fixtures and fittings are not included. Price is correct at time of publication and is subject to change without notice.

FOR MORE INFORMATION CONTACT NOSTRA HOMES 03 8331 3500



THE MAPLES
GREENVALE

HOUSE & LAND

THE MAPLES, GREENVALE

\$457,900

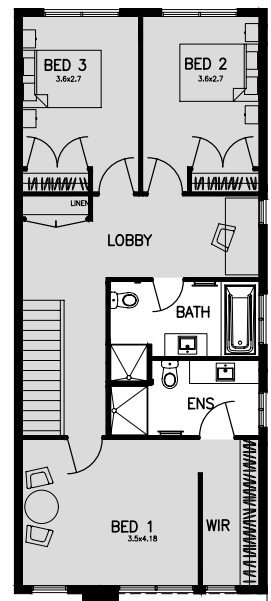
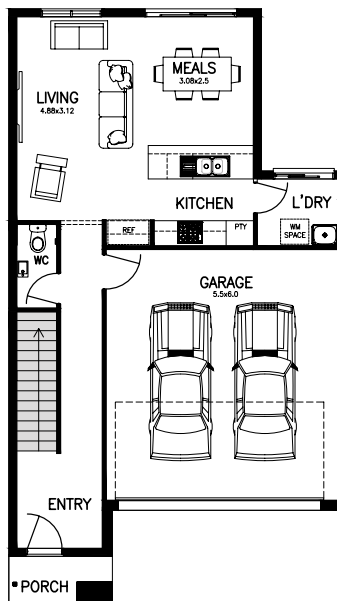
Lot 641 French Road, Greenvale
Land Size: 174m²

3  2  2 

Great value 3 bedroom home, fixed price with complete turn-key inclusions.

- ▶ Full turn-key inclusions
- ▶ 25 year structural guarantee
- ▶ 2590mm high ceilings to ground floor
- ▶ 600mm European Smeg Appliances
- ▶ 600mm European Smeg Dishwasher
- ▶ 20mm Stone benchtops to kitchen, bathroom and ensuite
- ▶ Carpets and tiles throughout
- ▶ Flyscreens and blinds to all windows
- ▶ Designer facade as depicted
- ▶ Full front and rear landscaping
- ▶ Coloured concrete driveway
- ▶ Fencing to all boundaries
- ▶ Letterbox and clothesline
- ▶ Fixed site costs including rock removal
- ▶ Plus much more!

All images are artist impression only, furniture and some fixtures and fittings are not included. Price is correct at time of publication and is subject to change without notice.



FOR MORE INFORMATION CONTACT NOSTRA HOMES 03 8331 3500