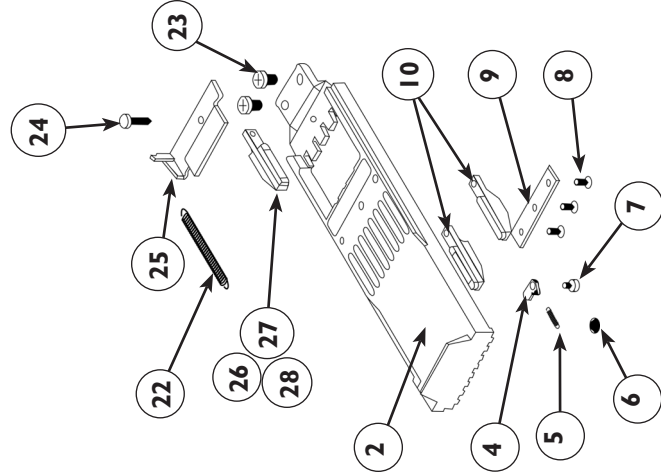


VERTICAL 8 PRICE CHANGE INSTRUCTIONS

- STEP 1:** UNLOCK SERVICE DOOR LOCK AND REMOVE PANEL
- STEP 2:** REMOVE MOUNTING BOLT
- STEP 3:** LIFT UP ON COINSLIDE AND PULL FORWARD
- STEP 4:** UNHOOK RETURN SPRING (#22)
- STEP 5:** PUT COINS IN HANDLE, PUSH HANDLE (#2) IN UNTIL COINS DROP THROUGH COINSLIDE
- STEP 6:** WHILE HOLDING HANDLE IN, LOOSEN SPRING BRACKET SCREW (#24)
- STEP 7:** REMOVE FUNCTIONAL INSERTS (#27) FROM CAVITY OF COINSLIDE HANDLE (SUGGESTION, STORE ALL INSERTS IN BULK FOR FUTURE USE)
- STEP 8:** RETIGHTEN SPRING BRACKET SCREW (#24)
- STEP 9:** FLIP COIN SLIDE UPSIDE DOWN, REMOVE THREE INSERT RETAINER PLATE SCREWS (#8) FROM UNDERSIDE
- STEP 10:** EXCHANGE BLANK INSERTS WITH FUNCTIONAL INSERTS

REVERSE INSTRUCTIONS TO RE-ASSEMBLE



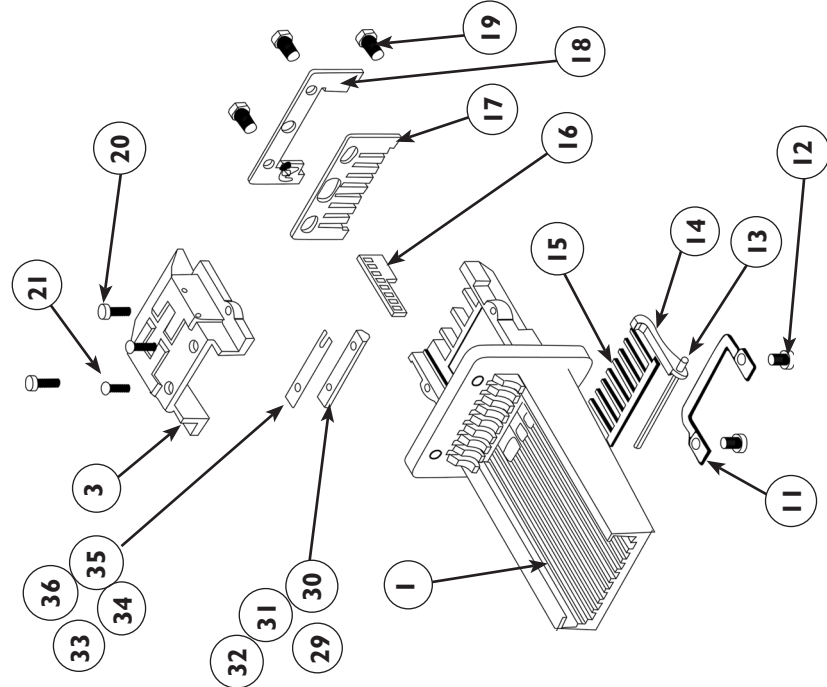
| ITEM | PART # | DESCRIPTION |
|------|--------|----------------------------|
| 1 | 21728 | BODY |
| 2 | 21727 | HANDLE |
| 3 | 21732 | BRIDGE |
| 4 | 20059 | RATCHET |
| 5 | 20065 | RATCHET SPRING |
| 6 | 20664 | RETAINER SPRING |
| 7 | 20736 | RATCHET SCREW |
| 8 | 21209 | INSERT RETAINER PLT. SCREW |
| 9 | 21738 | INSERT RETAINER PLATE |
| 10 | 21216 | BLANK INSERT |
| 11 | 20709 | BOTTOM PLATE |
| 12 | 50034 | BOTTOM PLATE SCREW |
| 13 | 20710 | PIVOT PIN |
| 14 | 20181 | LEVER |
| 15 | 20717 | LEAF SPRING |
| 16 | 21210 | RATCHET PLATE |
| 17 | 21881 | GATE |
| 18 | 21866 | GATE RETAINER |

VERTICAL 14 / VERTICAL 8 PRICE CHANGE INSTRUCTIONS

- STEP 1:** UNLOCK SERVICE DOOR LOCK AND REMOVE PANEL
- STEP 2:** REMOVE MOUNTING BOLT
- STEP 3:** LIFT UP ON COINSLIDE AND PULL FORWARD
- STEP 4:** UNHOOK RETURN SPRINGS
- STEP 5:** FLIP SLIDE UPSIDE DOWN AND REMOVE 2 EXTENSION SCREWS (P/N 22875) FLIP BACK OVER
- STEP 6:** SLIDE HANDLE OUT OF BODY (TOWARD YOU)
- STEP 7:** REMOVE (P/N 23214) AND PULL OUT EXTRA INSERTS
- STEP 8:** FLIP SLIDE OVER
- STEP 9:** UNSCREW 3 BOTTOM PLATE SCREWS
- STEP 10:** CHANGE VEND PRICE

* **NOTE:** FOR V14 COINSLIDES ONLY, THE .25 INSERT (10) MUST BE ON THE FAR LEFT AND/OR FAR RIGHT OF HANDLE (2).

REVERSE INSTRUCTIONS TO RE-ASSEMBLE



| ITEM | PART # | DESCRIPTION |
|------|--------|----------------------|
| 19 | 20185 | LOCATION SCREW |
| 20 | 50033 | BRIDGE SCREW |
| 21 | 20662 | BRIDGE INSERT SCREW |
| 22 | 21771 | RETURN SPRING |
| 23 | 50035 | EXTENSION SCREW |
| 24 | 50032 | SPRING BRACKET SCREW |
| 25 | 21860 | SPRING BRACKET |
| 26 | 21194 | 10¢ INSERT |
| 27 | 21193 | 25¢ INSERT |
| 28 | 21281 | \$1.00 INSERT |
| 29 | 21758 | \$1.85 BRIDGE INSERT |
| 30 | 21759 | \$2.00 BRIDGE INSERT |
| 31 | 21760 | \$2.75 BRIDGE INSERT |
| 32 | 21765 | \$5.75 BRIDGE INSERT |
| 33 | 20732 | .010 SHIM |
| 34 | 20733 | .015 SHIM |
| 35 | 20734 | .020 SHIM |
| 36 | 20735 | .030 SHIM |

PART NUMBER 8316532 / W10198127

COIN SLIDE KIT INSTALLATION AND VEND PRICE CHANGE

ESD MECHANICAL PRODUCTS 90 DAY WARRANTY

ESD warrants that the products it manufactures will be free from manufacturer's defects in materials and workmanship for a period of 90 DAYS from the date of washer/dryer equipment purchase. In the event of a defect, it will be the manufacturer's option to repair or replace the defective part or component. The manufacturer retains the option to replace the defective part or component with a new or remanufactured part or component.

Warranty is recognized only upon receipt of a copy of the original equipment invoice, and a description of item(s) in question. ESD reserves the right to inspect the product and determine reason for defect.

Customers who purchase ESD products do so with the knowledge that higher security products are available for an additional cost. Furthermore, a thief with ingenuity and specialized tools may have the ability to force, pick or otherwise defeat any lock or lock box when given sufficient access. Customers assume full responsibility of protecting ESD products from attack or accept the risk of failing to do so. **Vandalism is not covered under warranty.**

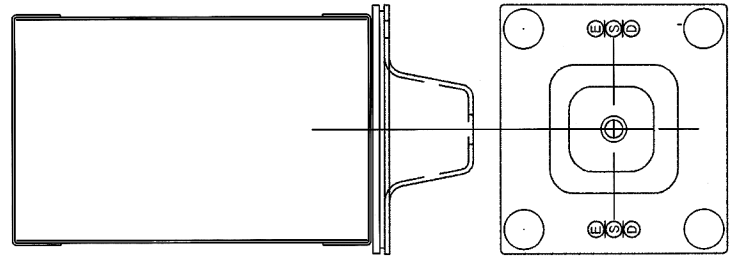
Customer shall be responsible for paying return freight to ESD. Labor to replace parts is not included in the warranty.

ESD DISCLAIMS ANY WARRANTY, EXPRESSED OR IMPLIED, THAT ESD PRODUCT'S WILL WITHSTAND ANY GIVEN ATTACK. ESD ASSUMES NO LIABILITY FOR ANY RESULTING LOSS OR DAMAGE.

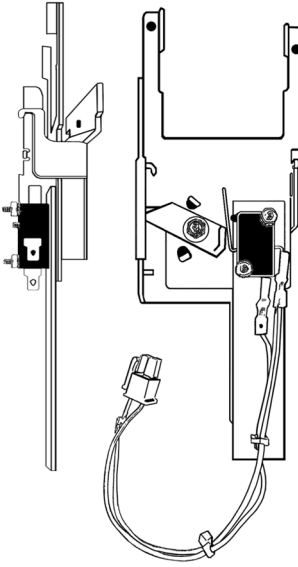
ESD Technical Support

To initiate a warranty repair or replacement, the customer must secure a Return Goods Authorization number (RGA#) from ESD by calling 215-628-0860

COIN SLIDE KIT INSTALLATION INSTRUCTIONS (P/N W10198127 or 3954807)



ESD
MONEY BOX



WASHER EXTENSION PART # 22800
 DRYER EXTENSION FOR MODEL CED 9050
 AND CGD 9050

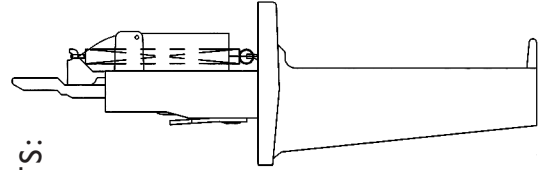
WASHER KIT CONSISTS OF

- 1 COIN SLIDE (V8-200) **\$1.00** **\$2.50**
- 1 MONEY BOX (72101-XD w/ Key) **\$1.25** **\$2.75**
- 1 MOUNTING BOLT #22681 **\$1.50** **\$3.00**
- 1 EXTENSION #22800 **\$1.75** **\$3.25**
- 2 SCREWS #10-32 PAN HEAD #50035 **\$2.25** **\$3.50**
- 1 DECAL SHEET #72097
- 1 SERVICE DOOR LOCK (KEY & CAM INCLUDED) (0400ET)
- 1 V14 COINSLIDE FOR MODEL CHW 9050 ONLY (72198)

DRYER KIT CONSISTS OF

- 1 COIN SLIDE (V8-200)
- 1 MONEY BOX (72101-XD)
- 1 BAG INCLUDING:
 - 1 MOUNTING BOLT #22681 EXTENSION #21064
 - 2 SCREWS #10-32 PAN HEAD #50035
 - 1 DECAL SHEET #72097
- 1 SERVICE DOOR LOCK (KEY & CAM INCLUDED) (0400ET)
- 22800 FOR MODEL CEDCG 9050 ONLY**

KIT COMPONENTS:



DRYER EXTENSION PART # 21064
 (For models other than, CED 9050
 and CGD 9050)

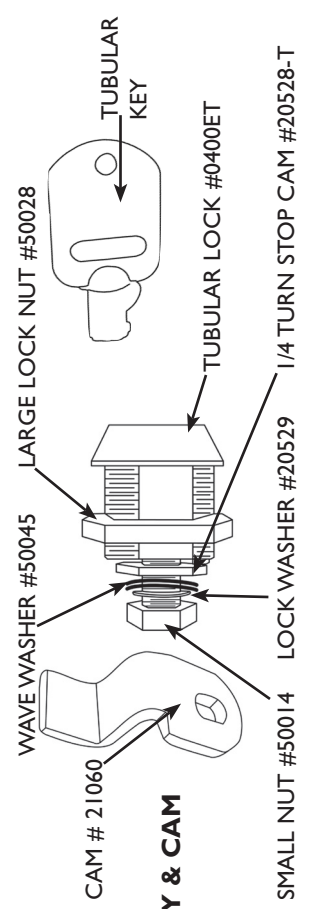
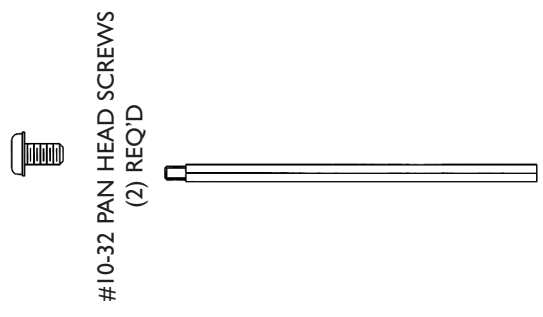
\$1.25

\$1.00

\$0.75

DECAL
 PART# 72097

KIT MAY INCLUDE
 V8 or V14 COIN SLIDE
 MOUNTING BOLT
 PART # 22681



LOCK, KEY & CAM



!WARNING

Electrical Shock Hazard

Disconnect power before servicing
 Replace all panels before operating.
 Failure to do so can result in death or electrical shock.

DISCONNECT ELECTRICAL POWER BEFORE INSTALLATION

**** REMOVE COINSLIDE ASSEMBLY FROM MACHINE ****

(Unhook wires, unscrew mounting bolt, lift up and pull out from the front of the machine)

To change vend price follow 7 step instructions on other side of page

STEP 1:
 COIN SLIDE EXTENSION
 ASSEMBLY

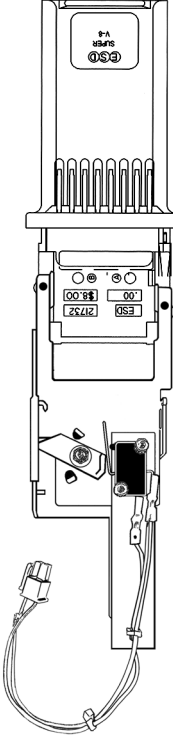
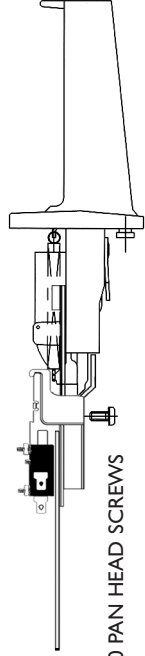
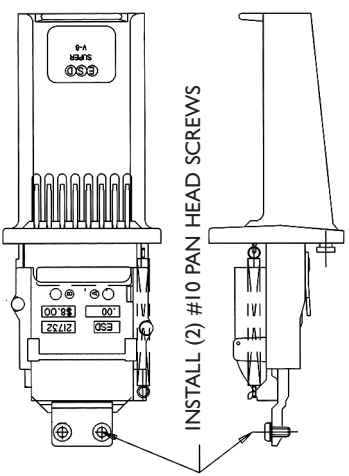


FIG. #1
 WASHER COINSLIDE ASSEMBLY
 and CEDCG MODEL DRYER

FIG. #2
 DRYER COINSLIDE ASSEMBLY



INSTALL (2) #10 PAN HEAD SCREWS
 MOUNT WASHER EXTENSION #22800 TO COIN SLIDE



INSTALL (2) #10 PAN HEAD SCREWS
 MOUNT DRYER EXTENSION #21064 TO COIN SLIDE

FIG. #1

FIG. #2

STEP 2:

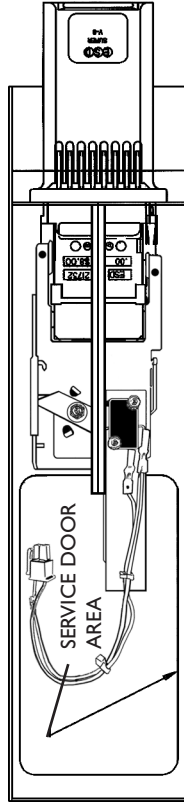
- INSERT KEY INTO MONEY BOX - TURN KEY TO OPEN POSITION (UNLOCKED)
- INSTALL MONEY BOX IN METER CASE AS INDICATED BY ARROW FIG #3
- LOCK MONEY BOX TO SECURE

STEP 3:

- INSTALL COINSLIDE WITH EXTENSION (SEE FIG #1 FOR WASHER AND DRYER MODEL #CEDCG) (SEE FIG.#2 FOR ALL OTHER MODEL DRYERS)

STEP 4:

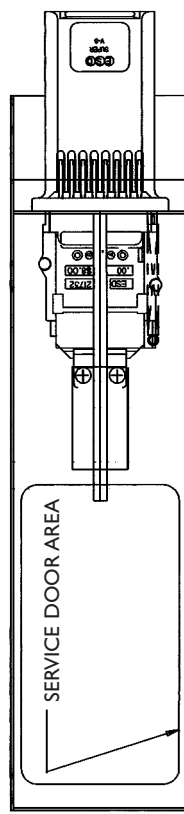
- SECURE COINSLIDE WITH MOUNTING BOLT (#22681) BY INSERTING THE MOUNTING BOLT THROUGH THE SERVICE DOOR OPENING ON TOP OF METER CASE, GUIDING THROUGH MOUNTING BOLT GUIDE AND TIGHTEN TO SECURE COIN SLIDE. USE A 5/16 SOCKET AND RATCHET (DO NOT OVER-TIGHTEN)



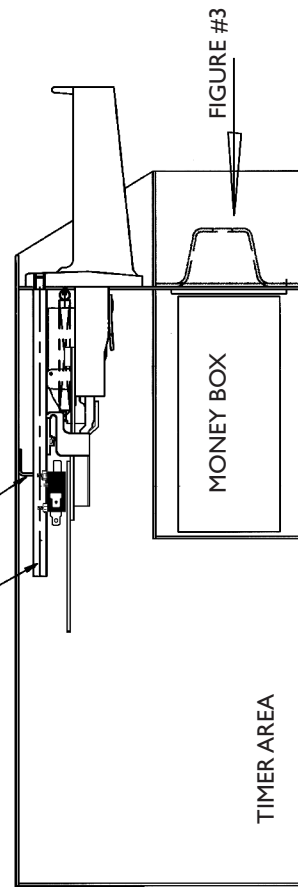
WASHER INSTALLATION

MOUNTING BOLT

MOUNTING BOLT GUIDE



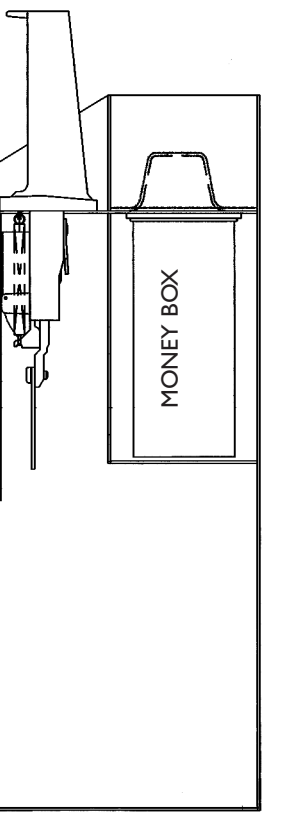
DRYER INSTALLATION



MONEY BOX

TIMER AREA

FIGURE #3



MONEY BOX

STEP 5:

- REMOVE 3/4 INCH NUT (LARGE #50028) FROM LOCK
- REMOVE 9/32 INCH NUT (SMALL #50014) FROM TAIL OF LOCK
- REMOVE LOCK WASHER (#20529) FROM TAIL OF LOCK
- DO NOT REMOVE (2) WAVE WASHERS (#50045) FROM TAIL OF LOCK
- INSERT LOCK THROUGH SERVICE DOOR PANEL HOLE
- ATTACH 3/4 INCH NUT (LARGE #50028), TIGHTEN TO SECURE TO PANEL
- FASTEN CAM (#21060) ONTO TAIL OF LOCK SECURING CAM WITH LOCK WASHER AND SMALL NUT. (OFFSET SIDE DOWN)

*** PLEASE WRITE DOWN KEY CODE
 (# stamped on key)
 AND KEEP IN A SAFE PLACE**