

# INVITATION

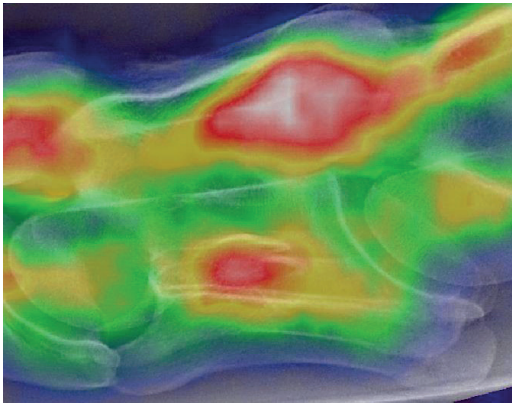


## EQUINE SCINTIGRAPHY MEETING

AT TIERKLINIK LÜSCHE GMBH

FRIDAY - 18<sup>TH</sup> OCTOBER 2019

SATURDAY - 19<sup>TH</sup> OCTOBER 2019



### SPEAKERS

**Dr. Carolin Gerdes**

Tierklinik Hochmoor, MRCVS

**Dr. Mahmoud Mageed**

Tierklinik Lüsche GmbH

**Dr. Mathieu Spriet**

Dipl.ACVR, Dipl.ECVDI; University of California Davis

**Dr. Natasha Werpy**

DVM, Dipl.ACVR, Teleradiologist

**Dr. Ceri Sherlock**

BVetMed (Hons), MS, Dipl.ACVS, MRCVS, Dipl.ECVDI-LA

**Mario Lindner**

M.Sc., Dipl.-Ing. (FH), MiE GmbH

**Sibylle Fischer**

MTRA, Curicum

# TIMETABLE

FRIDAY

## FRIDAY /// 18<sup>th</sup> October 2019

- 14:00 - 14:15** Registration and welcome
- 14:15 - 15:00** Principles of scintigraphy: Indication and technique  
Speaker: Dr. Carolin Gerdes
- 15:00 - 15:30** Past, present and future development of gamma camera in equine field  
Speaker: Mario Lindner
- 15:30 - 16:00** Overview of radiopharmaceutical bone agents <sup>1</sup>  
Speaker: Sibylle Fischer
- 16:00 - 16:30** Coffee break
- 16:30 - 17:00** Image quality and radiation safety in equine nuclear scintigraphy  
Speaker: Dr. Mahmoud Mageed
- 17:00 - 17:45** The reliability of interpretation scintigraphic findings  
Speaker: Dr. Carolin Gerdes
- 17:45 - 18:30** Overview of nuclear medicine in human medicine <sup>1</sup>  
Speaker: will be announced soon
- 18:30** Get together dinner (dinner at own expenses) 1 the title is subject to change

SATURDAY

## SATURDAY /// 19<sup>th</sup> October 2019

- 08:00 - 09:00** Scintigraphy of the foot  
Speaker: Dr. Natasha Werpy
- 09:00 - 10:00** Scintigraphy of the tarsus and stifle  
Speaker: Dr. Ceri Sherlock
- 10:00 - 11:00** Equine positron emission tomography (PET): Background, research and clinical applications  
Speaker: Dr. Mathieu Spriet
- 11:00 - 11:15** Coffee break
- 11:15 - 12:00** Equine PET: Case presentations  
Speaker: Dr. Mathieu Spriet
- 12:00 - 13:00** Scintigraphy of the fetlock and carpus  
Speaker: Dr. Natasha Werpy
- 13:00 - 14:00** Scintigraphy of the pelvis  
Speaker: Dr. Ceri Sherlock
- 14:00 - 15:00** Lunch break
- 15:00 - 16:00** Scintigraphy of the neck and back  
Speaker: Dr. Carolin Gerdes
- 16:00 - 17:00** Scintigraphy of the elbow and shoulder  
Speaker: Dr. Natasha Werpy
- 17:00 - 18:00** Update of equine scintigraphy literature  
Speaker: Dr. Ceri Sherlock

### ATF

For this course 12 ATF hours (§10 ATF) are accepted

# REGISTRATION



## EQUINE SCINTIGRAPHY MEETING AT TIERKLINIK LÜSCHE GMBH

FRIDAY - 18<sup>TH</sup> OCTOBER 2019  
SATURDAY - 19<sup>TH</sup> OCTOBER 2019

### BINDING REGISTRATION

I register for the event „SCINTIGRAPHY MEETING“ from **18<sup>th</sup> - 19<sup>th</sup> October 2019** at Tierklinik Lüsche

Title & Name

Street

Code / Place

Phone

Mail

Yes, I'm interested in the „Get Together“ Dinner on Friday

No, I'm not interested in the „Get Together“ Dinner on Friday

Date

Signature

SCINTIGRAPHIE CONGRESS

### COSTS & PAYMENT

**Participation fee: 600,00 €** (excl. VAT)

We are sending over the bank details via mail once we have received your registration.  
Please note that we can only book your registration if the full fee is paid in advance.

## RECOMMENDED HOTELS

We are recommending the following hotels - listed by distance to Tierklinik Lüsche. If you have any questions regarding your stay please do not hesitate to contact us.

### **Bauernstube Kathmann** (4.8 km distance)

Dinklager Straße 10  
49632 Essen/Oldb OT Addrup  
Tel.: 0 54 38 / 420  
[www.bauernstube-kathmann.de](http://www.bauernstube-kathmann.de)

### **Burghotel Dinklage** \*\*\*\*\* (12 km distance)

Burgallee 1  
49413 Dinklage  
Tel.: 0 44 43 / 89 7 0  
[www.vilavitaburghotel.de](http://www.vilavitaburghotel.de)

### **Hotel Rheinischer Hof** \*\*\* (12 km distance)

Burgstr. 54  
49413 Dinklage  
Tel.: 0 44 43 / 12 60  
[www.hotel-rheinischer-hof.de](http://www.hotel-rheinischer-hof.de)

### **Hotel Am Pfauenhof** \*\*\* (13.5 km distance)

Bunner Straße 1  
49632 Essen (Oldb)  
Tel.: 0 54 31 / 96 88 0  
[www.am-pfauenhof.de](http://www.am-pfauenhof.de)

### **Hotel Niedersachsen** \*\* (13.5 km distance)

St. Antoniort 2  
49610 Quakenbrück  
Tel.: 0 54 31 / 94 77 0  
[www.hotelniedersachsen-quakenbrueck.de](http://www.hotelniedersachsen-quakenbrueck.de)

### **Park Hotel Cloppenburg** (14.1 km distance)

Burgstraße 8  
49661 Cloppenburg  
Tel.: 0 44 71 / 66 14 16  
[www.parkhotel-cloppenburg.de](http://www.parkhotel-cloppenburg.de)

### **Hotel Münsterländer Hof** \*\*\*\*\* (14 km distance)

Bahnhofstraße 30  
49661 Cloppenburg  
Tel.: 0 44 71 / 70 20 70  
[www.muensterlaenderhof.info](http://www.muensterlaenderhof.info)

### **Hotel Bremer Tor** \*\*\* (14.7 km distance)

Bremer Straße 1-3  
49377 Vechta  
Tel.: 0 44 41 / 99 99 0  
[www.bremertor.de](http://www.bremertor.de)

### **Schäfer`s Hotel** \*\*\*\* (14,3 km distance)

Lange Straße 66  
49661 Cloppenburg  
Tel.: 0 44 71 / 24 84  
[www.schaefers-hotel-cloppenburg.de](http://www.schaefers-hotel-cloppenburg.de)

### **Hotel Villa Linda** \*\*\* (14,8 km distance)

Bremer Str. 19  
49377 Vechta  
Tel.: 0 44 41 / 88 79 65 6  
[www.hotel-villa-linda.de](http://www.hotel-villa-linda.de)

### **Hotel am Kaponier** \*\*\* (15 km distance)

Große Straße 47  
49377 Vechta  
Tel.: 0 44 41 / 92 32 0  
[www.kaponier.de](http://www.kaponier.de)

### **Hotel Am Pferde Zentrum** \*\*\* (16.9 km distance)

Lohner Straße 22  
49377 Vechta  
Tel.: 0 44 41 / 91 79 80  
[www.am-pferdezentrum.de](http://www.am-pferdezentrum.de)