

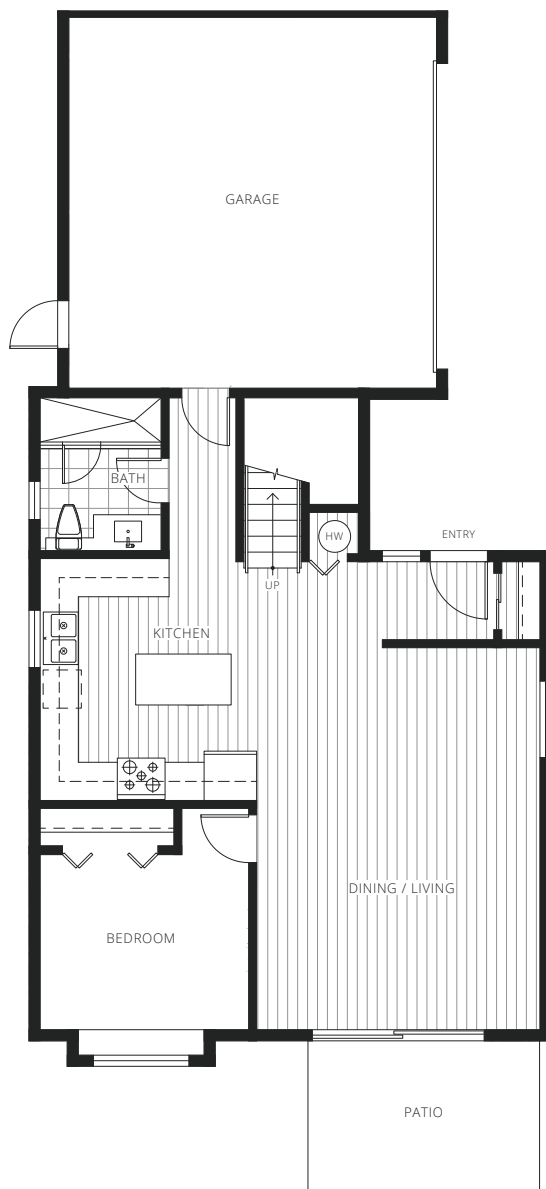
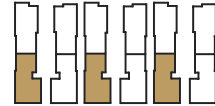


# TRILLION

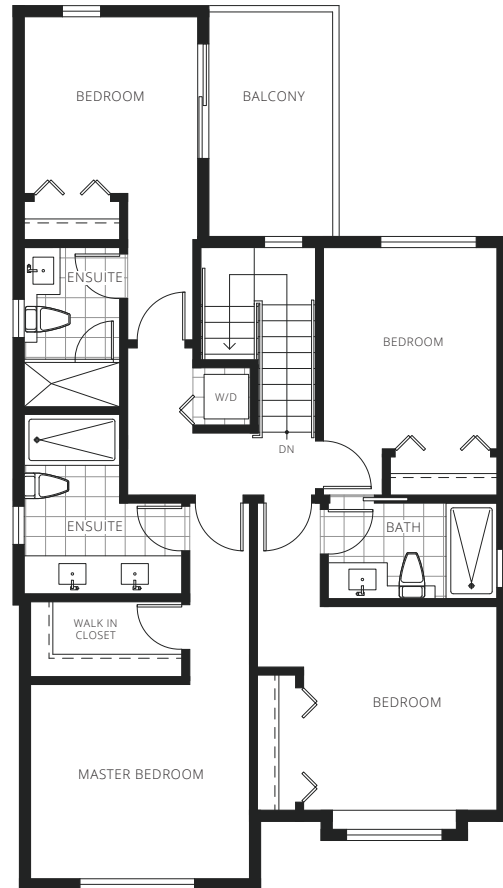
## A2

5 BEDROOM, 4 BATHROOM

1,820 SQ FT (APPROX.) LIVING AREA



MAIN FLOOR



UPPER FLOOR

The developer reserves the right to make modifications or substitutions should they be necessary without prior notice, any measurements provided are approximate only. E&OE. The quality residences at Trillion are built by Konic Development Ltd.