

## STANDARD SPECIFICATIONS

**Engineering:** ASCE 7-10/CPP Wind Tunnel Tested

**Grounding:** Fully Integrated UL2703

**Rack Coating:** Galvanized; G90

**Screw Coating:** ATSM 123

**Wind Loading:** Up to 165mph

**Snow Loading:** Up to 100psf

**Mounting Orientation:** 2 High Portrait

**Warranty:** 25 Years

**Foundation:** Dual Ground Screws

**Tilt Angles:** 5-35 degree tilt options

## DUAL GROUND SCREWS

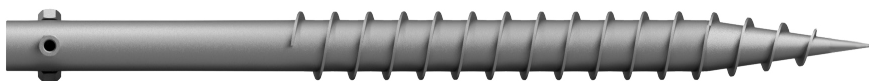
APA's TITAN Duo can tackle even the most challenging of sites. The dual ground screw foundation is the perfect solution for glacial till, cobble, hardpan and even solid bedrock. The heavy walled tube and welded connections allow for massive amounts of torque and pressure to be applied helping the screw to advance into even the toughest soils.

## TITAN<sup>DUO</sup>

Designed by installers for installers, the **TITAN** is the most advanced hardware in the industry. The TITAN's unique asymmetrical design and innovative features allow for flexibility in the field while streamlining the install process. The 3-rail design is an excellent solution for bifacial modules with low backside shading.

With the lowest part count per MW, integrated grounding and cable trays, and 30% faster module install speed, the TITAN is installers preferred choice. The TITAN Duo comes standard with dual 3" diameter ground screws for rocky soil conditions.

*In business since 2008, APA offers the most versatile line of racking and foundation solutions for projects in even the most challenging environments. With projects nationwide, APA is a trusted quality racking partner.*



# WHAT MAKES THE **TITAN DUO** SYSTEM SO ADVANCED?

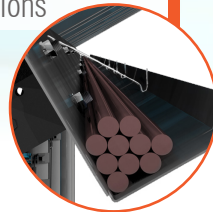
## ASYMMETRICAL 3-RAIL DESIGN

- 25% Less East-West rails
- Lowest part count per MW
- 2-High Portrait ideal for split cell modules
- Low back panel shading for bifacial modules



## WIRE MANAGEMENT

Integrated cable trays and custom wire clips keep your project organized, safe, and code compliant for the life of the project, without costly third-party solutions



## TELESCOPING POST

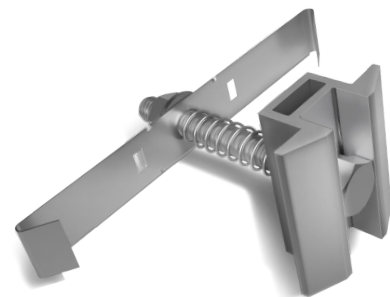
Allows for quick adjustment in the field for high degrees of topography on site

## ADJUSTABLE CROSS BRACING

C-channel bracing allows for easy adjustment in the field

## GROUND SCREWS ARE STANDARD

The TITAN DUO is specifically designed for sites with glacial till, cobble, hardpan and bedrock



## PATENT PENDING GRAVITY CLIP

- Fully integrated module grounding
- Allows for rapid installation of modules
- Accommodates different module widths
- Positive locking gravity clip guarantees clips cannot loosen from ice or vibrations