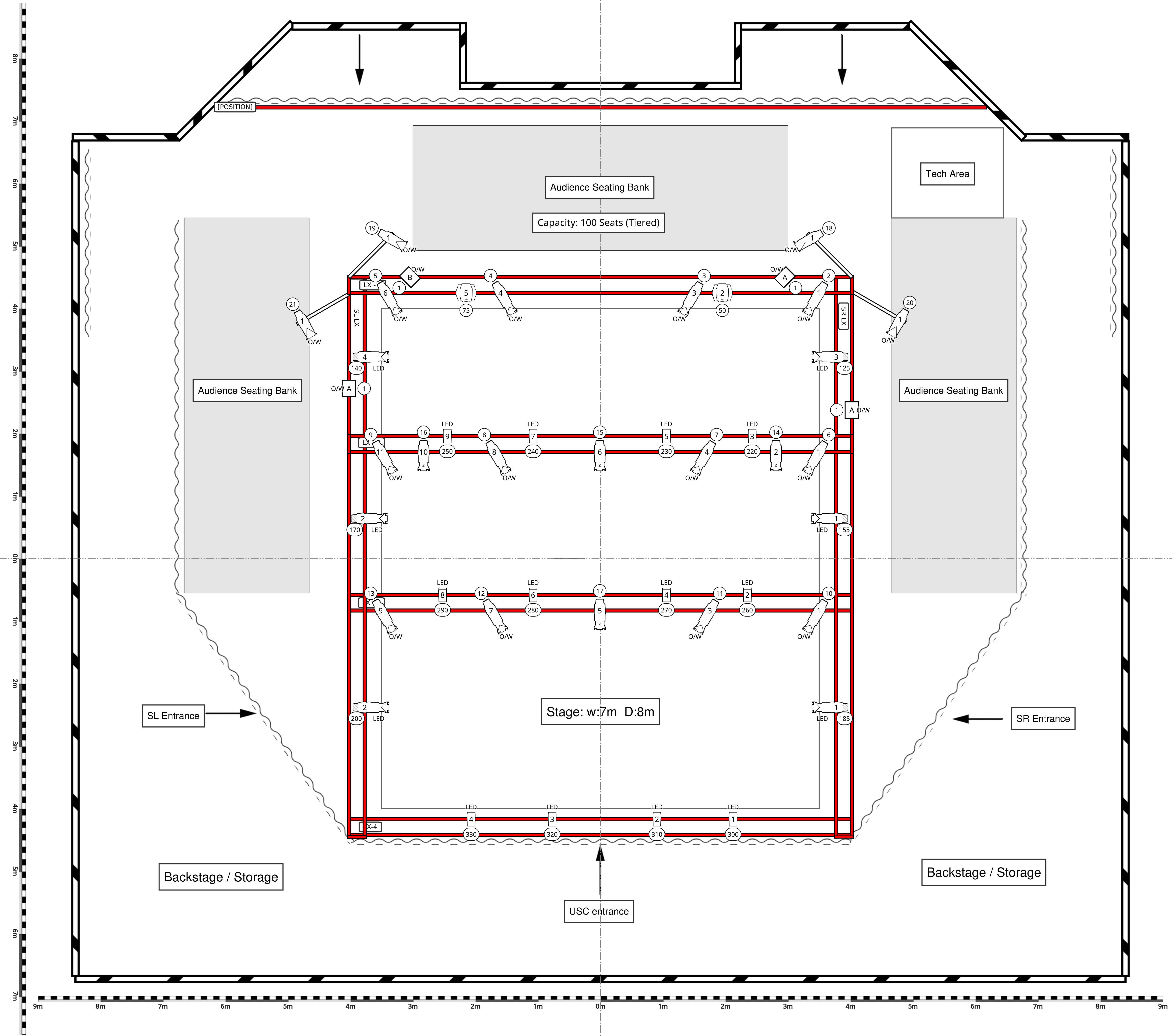
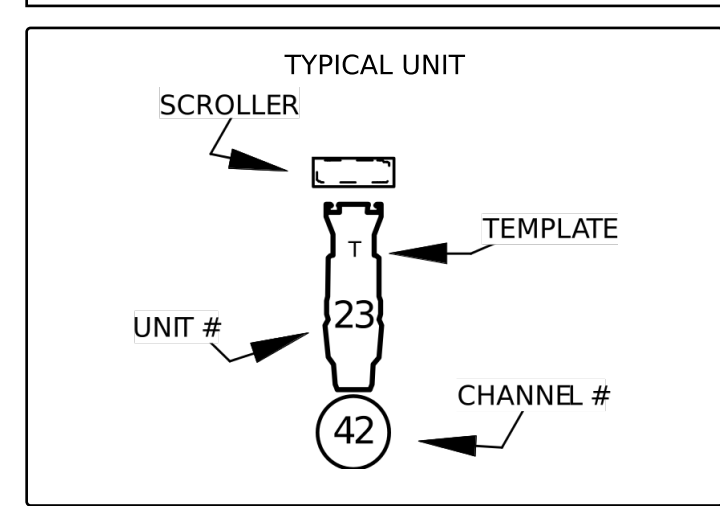


- SYMBOL KEY**
- Source-4 50° 575w
 - Source-4 90° 575w
 - Source 4 Jr 25-50 Deg. (575W)
 - Source 4 Lustr2 (Direct mode: 10ch)
 - Chauvet COLOURdash 5-Par1 (4ch)
 - Selecon Hui Flood 500W
 - Martin Mac-250 Entour (Ext. Mode)



8m
7m
6m
5m
4m
3m
2m
1m
0m
1m
2m
3m
4m
5m
6m
7m

9m 8m 7m 6m 5m 4m 3m 2m 1m 0m 1m 2m 3m 4m 5m 6m 7m 8m 9m



THIS DRAWING REPRESENTS VISUAL CONCEPTS AND CONCEPTS ONLY. IT DOES NOT REPLACE THE KNOWLEDGE AND SKILLS OF A QUALIFIED THEATRICAL ENGINEER. THE DESIGNER IS UNWARRANTED TO DETERMINE THE STRUCTURAL REQUIREMENTS OF THIS DESIGN AND WILL NOT ASSUME RESPONSIBILITY FOR DAMAGE TO PROPERTY OR LIFE.

Callum Graham
Greenside Venues Ltd.
07585112144
callum@greensidevenues.co.uk

PRODUCED BY
Greenside Venues Ltd.
Tara Kilbourne & Darren Heale

LIGHTING DESIGN: Callum Graham
TECHNICAL DIRECTOR: Callum Graham
EQUIPMENT SUPPLIER: Live Systems Ltd.

Emerald Theatre

25 Nicolson Square,
Edinburgh,
EH8 9BX

SCALE: 1:25
ISSUE NO: 1
DATE: ISSUE DATE
REVISION:
DRAWN BY:

DRAWING NO:
1
OF 1

PLOT