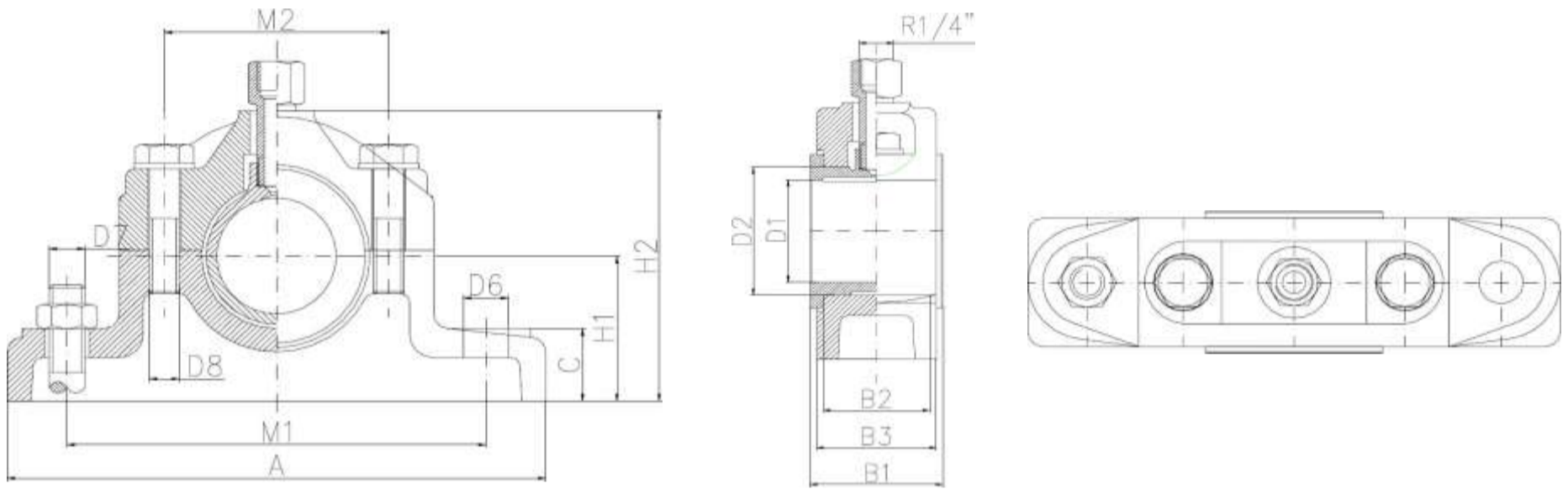




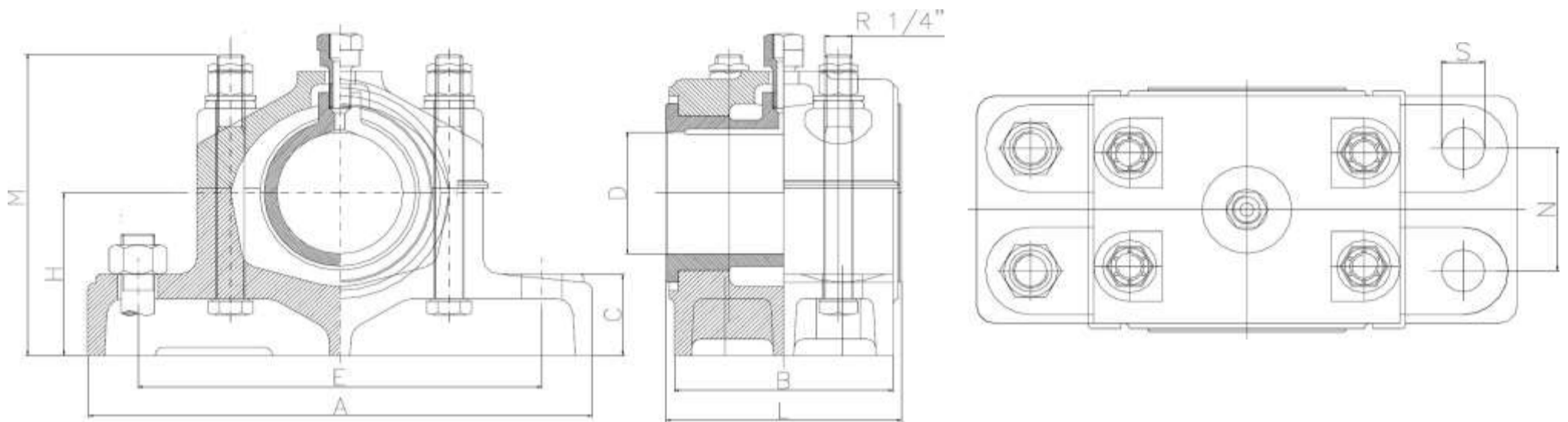
DIN 505 L Series – Plummer Block Bearing Housings
 Housing Material: Grey Cast Iron, SG Iron or Cast Steel.
 Bearing Material: Phosphor Bronze (Grade PB1 and PB2).



Dimensions (mm)													
D1 (D10)	D2 (K7)	D6	D7	D8 (+/-0,2)	A	B1 (+0/0,3)	B2 (-0,1)	B3	C	H1	H2	M1	M2
25	35	15	M12	M10	165	45	35	40	22	40	85	125	65
30	40	15	M12	M10	165	45	35	40	22	40	85	125	65
35	45	15	M12	M10	180	50	40	45	25	50	100	140	75
40	50	15	M12	M10	180	50	40	45	25	50	100	140	75
45	55	19	M16	M12	210	55	45	50	30	60	120	160	90
50	60	19	M16	M12	210	55	45	50	30	60	120	160	90
55	65	19	M16	M12	225	60	50	55	35	70	140	175	100
60	70	19	M16	M12	225	60	50	55	35	70	140	175	100
65	80	24	M20	M16	270	65	53	60	40	80	160	210	120
70	85	24	M20	M16	270	65	53	60	40	80	160	210	120
75	90	24	M20	M16	290	75	63	70	45	90	180	230	130
80	95	24	M20	M16	290	75	63	70	45	90	180	230	130
90	105	28	M24	M20	330	85	73	80	50	100	200	265	150
100	115	28	M24	M20	355	95	81	90	55	110	220	290	170
110	125	28	M24	M20	355	95	81	90	55	110	220	290	170
120	140	35	M30	M24	420	110	94	100	60	130	260	340	200
125	145	28	M24	M20	420	110	94	100	60	110	220	290	170
130	150	35	M30	M24	420	110	94	100	60	130	260	340	200
140	160	35	M30	M24	440	125	105	120	65	150	300	360	220
150	170	35	M30	M24	440	125	105	120	65	150	300	360	220



DIN 506 A Series – Plummer Block Bearing Housings
 Housing Material: Grey Cast Iron, SG Iron or Cast Steel.
 Bearing Material: Phosphor Bronze (Grade PB1 and PB2).



Dimensions (mm)										Weight (kg)
D (D10)	A	H	B	L	C	E	N	M	S	
55	230	80	105	120	35	180	60	145	M16	10,5
60	230	80	105	120	35	180	60	145	M16	10,5
65	260	90	115	130	45	210	65	165	M16	14,5
70	260	90	115	130	45	210	65	165	M16	14,5
75	300	100	130	140	50	240	70	190	M20	25
80	300	100	130	140	50	240	70	190	M20	25
90	330	100	140	160	50	270	80	200	M20	30
100	360	110	155	180	55	300	90	210	M24	40
110	360	110	155	180	55	300	90	210	M24	40
120	400	120	170	200	60	330	100	245	M24	52
125	400	120	170	200	60	330	100	245	M24	52
130	400	120	170	200	60	330	100	245	M24	52
140	440	130	190	220	65	360	110	260	M30	80
150	440	130	190	220	65	360	110	260	M30	80
160	530	170	220	260	70	450	130	340	M30	118
180	530	170	220	260	70	450	130	340	M30	118
200	680	240	260	300	80	580	160	480	M30	235
220	680	240	260	300	80	580	160	480	M30	235
240	750	265	300	355	100	630	180	515	M36	440
260	750	265	300	355	100	630	180	515	M36	440
280	850	315	335	400	120	700	200	610	M42	540
300	850	315	335	400	120	700	200	610	M42	540